

THE REPUBLIC
STRUCTURAL
IRON WORKS
COMPANY



CLEVELAND, OHIO

AISC E&R Library



5541

ARCH

TA685

.R31

1914

5541

THE REPUBLIC STRUCTURAL IRON WORKS CO.

Discount Sheet

for

Estimating-Hand Book

Edition D

Subject to Change Without Notice

Prices F. O. B. Cleveland, O.

THE REPUBLIC STRUCTURAL
IRON WORKS CO.
CLEVELAND, OHIO

THE REPUBLIC STRUCTURAL IRON WORKS CO.

Catalog Page	Subject	Numbers	MAY 1974 Discount
3	*Plain Beams, Channels, etc. Write for Prices. Subject to market changes.		
4-5-6	Lintels	L 1-L 98	50
11	Pipe Columns—Steel caps and base	C 1-C 7	50
11	Pipe Columns—C. I. caps and base	C 1-C 7	45
14-15	Awning Steel Frame.....		50
14-15	Awning Steel Truss.....		45
15	Awning Steel Truss Cantilever.		40
16	Standard Guyed Stacks....	S 1-15	40
16	Guy Lines		40
19-20	Steel roof trusses & purlins	All Spans	50
22-23	Standard rails	RA-1	50
22-23	“ “	RA-2	50
22-23	“ “	RA-3	25
22-23	“ “	RA-4	30
22-23	“ “	RA-5	30
22-23	“ “	RA-6	30
22	“ “	RA-7	20
22	“ “	RA-8	10
26	Standard Pipe Rails Double	PR 1-3	50
26	“ “ “ Single	PR 4-6	50
28	Spiral Stairs	Open Risers	25
28	“ “	Closed Risers	25
29	Brackets	BR-1	40
29	“	BR-2	40
30	Coal Rings	CR 1-7	50
31	“ “ Illuminated....	CR 8-14	50
32	SIDEWALK DOORS (List Prices Page 32)		
33	Standard Single Doors.....	SD 1-32	70
34	“ Double “	SD 1-32	60
35	Stand. Dble Doors Flush Top	SD 1-32	50
36	Stand. Dble Doors Flush Ill.	SD 1-32	40
37	Area Gratings	GR 1-13	45
38	Window Guards Plain.....	GA 1-16	50
38	“ “ Ornamental	GA 1-16	25
39	Grills	1	25
39	“	2	10
39	“	3	10
39	“	4	5

CLEVELAND, OHIO

Catalog Page	Subject	Numbers	Discount
39	Wickets	5	40
39	"	6	40
39	"	7	40
39	"	8	25
42-41	Corrugated Iron Painted...	Cor. 1-6	50
42-41	" " Galvanized	Cor. 7-12	50
44-45	Anchors—All Sizes & Styles	AN 1-8	50
46	Folding Gates	Style C	40
47	Hinged Gates.....	" A	50
47	" "	" B	40
48	Wheel Guards	WG 1-6	50
49	Corner Guards for Brick Walls	G 1-5	50
49	Curb Guards	G 11-16	50
49	Curb Guards for Wood....	G 17-22	50
49	Guards for Wood Columns.	G 6-10	50
50	Jamb Guards	JG 1-8	50
50	Column Guards, Square....	CO 1-10	50
50	Column Guards, Round....	CO 1-10	50
51	Thresholds Steel	TR 1	50
51	" Pressed Steel...	TR 2	50
51	" Cast Iron.....	TR 3	50
51	" Cast Iron Ribbed	TR 4	50
52-53	Sills Plain Plate.....	SS 1-8	60
52-53	Sills Star-Stamped Plate...	SS 1-8	50
52-53	Sills Diamond Checkered Plate	SS 1-8	40
56	Ladders	LA 1-9	50
57	Ladder Rungs		50
57	Bearing Plates	PL 1-12	50
58	Cast Iron Ash Pit and Clean-out Doors		50
58	Cast Iron Foundation Grates		50
58	Cast Iron Ventilator Grates		50
59	Steel Clean-out Doors....	AD 1-20	50
60-61	Duplex Post Caps.....		40
62-63	Duplex Joist Hangers.....		40
63	Duplex Post Bases.....		40
64	Duplex Wall Hangers Steel		40
65	Ideal Post Caps.....		40
66-67	Ideal Joist Hangers.....		40
68-72	Concrete Bars		40

Write for Prices. Subject to market changes.

Write for Catalog and Prices of Concrete Specialties.

B321

**PRACTICAL
ESTIMATING HANDBOOK**

—OF—

**STRUCTURAL
AND BUILDERS
IRON WORK**

—FOR—

**CONTRACTORS
ARCHITECTS
ENGINEERS**

—
DISCOUNT SHEET FURNISHED ON APPLICATION

—
**THE REPUBLIC STRUCTURAL
IRON WORKS CO.**

CLEVELAND, OHIO

EDITION D

COPYRIGHTED, 1914

BY

THE REPUBLIC STRUCTURAL IRON WORKS CO.

FOREWORD

THIS handbook is issued with the object of providing the necessary information for at once determining the cost of the iron and steel used in an ordinary building.

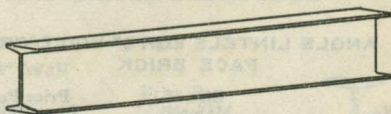
The usual technical method of pricing has been avoided; as far as feasible all prices are shown per lineal or square foot.

The articles shown are all manufactured and carried in stock by this company.

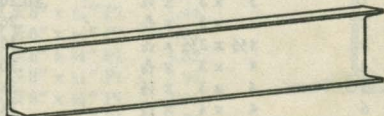
**The
Republic Structural Iron
Works Co.**

STOCK MATERIAL

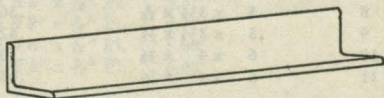
I BEAMS
3" to 24"
Lengths to 60'-0"



CHANNELS
3" to 15"
Lengths to 60'-0"



ANGLES
 $\frac{1}{2}$ "x $\frac{1}{2}$ " to 8"x8"
20' to 60'-0"



BAR
1" to 6" Wide
12'-0" to 18'-0"

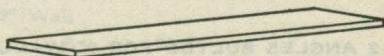
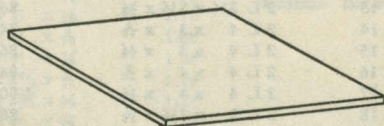
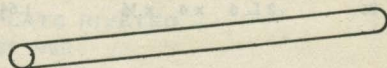


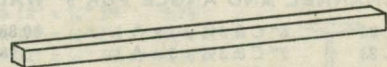
PLATE
 $\frac{1}{8}$ " to 1" Thick
All Sizes



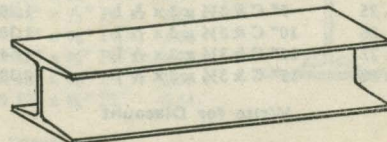
ROUNDS
 $\frac{1}{8}$ " to 3"



SQUARES
 $\frac{1}{8}$ " to 3"



H COLUMNS
4" to 12"
Lengths to 60'-0"



For Concrete Bars see pages 68 and 69

REPUBLIC STANDARD LINTELS

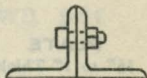
ANGLE LINTELS FOR 4" WALL OR
FACE BRICK

No.	Size of Material	Price Per Lineal Foot
L 1	3 x 3 x $\frac{1}{4}$	\$0.20
L 2	3 x 3 x $\frac{1}{8}$.26
L 3	$3\frac{1}{2}$ x $3\frac{1}{2}$ x $\frac{1}{8}$.30
L 4	4 x 3 x $\frac{1}{8}$.30
L 5	4 x 3 x $\frac{3}{8}$.34
L 6	4 x 4 x $\frac{1}{8}$.34
L 7	4 x 4 x $\frac{3}{8}$.40
L 8	5 x $3\frac{1}{2}$ x $\frac{1}{8}$.36
L 9	5 x $3\frac{1}{2}$ x $\frac{3}{8}$.42
L 10	6 x 4 x $\frac{3}{8}$.50
L 11	6 x 4 x $\frac{1}{2}$.66



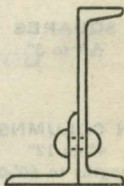
2 ANGLES BOLTED FOR 9" WALL

L 12	2 L $3\frac{1}{2}$ x $3\frac{1}{2}$ x $\frac{1}{8}$	\$0.74
L 13	2 L $3\frac{1}{2}$ x $3\frac{1}{2}$ x $\frac{3}{8}$.86
L 14	2 L 4 x 3 x $\frac{1}{8}$.74
L 15	2 L 4 x 3 x $\frac{3}{8}$.86
L 16	2 L 4 x 4 x $\frac{1}{8}$.84
L 17	2 L 4 x 4 x $\frac{3}{8}$	1.00
L 18	2 L 5 x $3\frac{1}{2}$ x $\frac{1}{8}$.88
L 19	2 L 5 x $3\frac{1}{2}$ x $\frac{3}{8}$	1.06
L 20	2 L 6 x 4 x $\frac{3}{8}$	1.24
L 21	2 L 6 x 4 x $\frac{1}{2}$	1.64



CHANNEL AND ANGLE FOR 9" WALL

L 22	6" C & $3\frac{1}{2}$ x 3 x $\frac{1}{8}$ L	\$0.88
L 23	7" C & $3\frac{1}{2}$ x 3 x $\frac{1}{8}$ L	.98
L 24	8" C & $3\frac{1}{2}$ x 3 x $\frac{1}{8}$ L	1.08
L 25	9" C & $3\frac{1}{2}$ x 3 x $\frac{1}{8}$ L	1.20
L 26	10" C & $3\frac{1}{2}$ x 3 x $\frac{1}{8}$ L	1.30
L 27	12" C & $3\frac{1}{2}$ x 3 x $\frac{1}{8}$ L	1.64
L 28	15" C & $3\frac{1}{2}$ x 3 x $\frac{1}{8}$ L	2.38



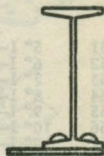
Write for Discount

REPUBLIC STANDARD LINTELS

I BEAM AND PLATE RIVETED

For 9" Wall

No.	Size	Price Per Lineal Ft.
L 29	5" x 9¾ lb. I & 8" x ¼" Pl.	\$1.28
L 30	6" x 12¼ lb. I & 8" x ¼" Pl.	1.44
L 31	7" x 15 lb. I & 8" x ¼" Pl.	1.62
L 32	8" x 18 lb. I & 8" x ¼" Pl.	1.82
L 33	9" x 21 lb. I & 8" x ¼" Pl.	2.00
L 34	10" x 25 lb. I & 8" x ¼" Pl.	2.26
L 35	12" x 31½ lb. I & 8" x ⅝" Pl.	2.68
L 36	15" x 42 lb. I & 8" x ⅝" Pl.	3.48
L 37	18" x 55 lb. I & 8" x ⅝" Pl.	4.32
L 38	20" x 65 lb. I & 8" x ⅝" Pl.	5.00
L 39	24" x 80 lb. I & 8" x ⅝" Pl.	6.00



ANGLES WITH PIPE SEPARATORS

For 13" Wall

L 40	2 L 3½ x 3 x ⅝	\$0.90
L 41	2 L 3½ x 3½ x ⅝	.96
L 42	2 L 4 x 3 x ⅝	.96
L 43	2 L 4 x 3 x ¾	1.10
L 44	2 L 4 x 4 x ⅝	1.08
L 45	2 L 4 x 4 x ¾	1.26
L 46	2 L 5 x 3½ x ⅝	1.14
L 47	2 L 5 x 3½ x ¾	1.32
L 48	2 L 6 x 4 x ¾	1.52
L 49	2 L 6 x 4 x ⅞	1.96



I BEAM AND PLATE RIVETED

For 13" Wall

L 50	5" x 9¾ lb. I & 12" x ¼" Pl.	\$1.44
L 51	6" x 12¼ lb. I & 12" x ¼" Pl.	1.60
L 52	7" x 15 lb. I & 12" x ¼" Pl.	1.78
L 53	8" x 18 lb. I & 12" x ¼" Pl.	1.96
L 54	9" x 21 lb. I & 12" x ¼" Pl.	2.16
L 55	10" x 25 lb. I & 12" x ⅝" Pl.	2.58
L 56	12" x 31½ lb. I & 12" x ⅝" Pl.	3.00
L 57	15" x 42 lb. I & 12" x ¾" Pl.	3.86
L 58	18" x 55 lb. I & 12" x ¾" Pl.	4.70
L 59	20" x 65 lb. I & 12" x ¾" Pl.	5.30
L 60	24" x 80 lb. I & 12" x ¾" Pl.	6.34



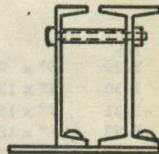
Write for Discount

REPUBLIC STANDARD LINTELS

I BEAM, CHANNEL AND PLATE

For 13" Wall

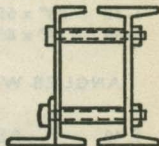
			Price Per Lineal Ft.
L 61	5" I—	5" C & 12" x 1/4" Pl.	\$1.94
L 62	6" I—	6" C & 12" x 1/4" Pl.	2.18
L 63	7" I—	7" C & 12" x 1/4" Pl.	2.50
L 64	8" I—	8" C & 12" x 1/4" Pl.	2.76
L 65	9" I—	9" C & 12" x 5/16" Pl.	3.26
L 66	10" I—	10" C & 12" x 5/16" Pl.	3.64
L 67	12" I—	12" C & 12" x 5/16" Pl.	4.42
L 68	15" I—	15" C & 12" x 5/16" Pl.	5.90



I BEAM, CHANNEL AND ANGLE

For 13" Wall

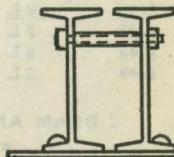
L 69	5" I—	5" C & 3 1/2" x 3 x 5/16" L	\$1.70
L 70	6" I—	6" C & 3 1/2" x 3 x 5/16" L	1.94
L 71	7" I—	7" C & 3 1/2" x 3 x 5/16" L	2.24
L 72	8" I—	8" C & 3 1/2" x 3 x 5/16" L	2.60
L 73	9" I—	9" C & 3 1/2" x 3 x 5/16" L	2.86
L 74	10" I—	10" C & 3 1/2" x 3 x 5/16" L	3.22
L 75	12" I—	12" C & 3 1/2" x 3 x 5/16" L	4.00
L 76	15" I—	15" C & 3 1/2" x 3 x 5/16" L	5.50



2 I BEAMS AND PLATE

For 13" Wall

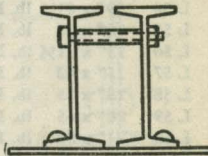
L 77	2	5" Is & 12" x 1/4" Pl.	\$2.14
L 78	2	6" Is & 12" x 1/4" Pl.	2.46
L 79	2	7" Is & 12" x 1/4" Pl.	2.82
L 80	2	8" Is & 12" x 1/4" Pl.	3.20
L 81	2	9" Is & 12" x 5/16" Pl.	3.82
L 82	2	10" Is & 12" x 5/16" Pl.	4.30
L 83	2	12" Is & 12" x 5/16" Pl.	5.14
L 84	2	15" Is & 12" x 3/8" Pl.	6.60
L 85	2	18" Is & 12" x 3/8" Pl.	8.40
L 86	2	20" Is & 12" x 3/8" Pl.	9.70
L 87	2	24" Is & 12" x 3/8" Pl.	11.70



2 I BEAMS AND PLATE

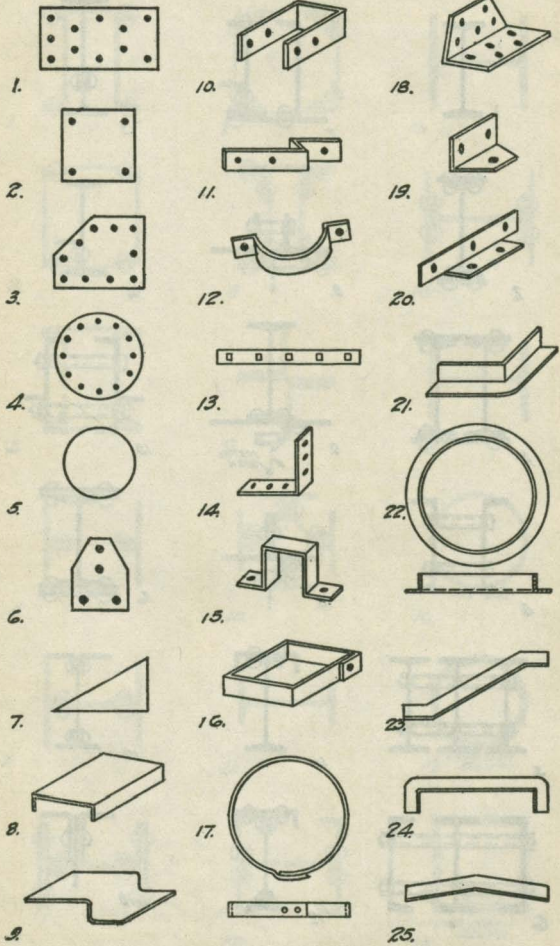
For 17" Wall

L 88	2	5" Is & 16" x 1/4" Pl.	\$2.60
L 89	2	6" Is & 16" x 1/4" Pl.	2.90
L 90	2	7" Is & 16" x 1/4" Pl.	3.26
L 91	2	8" Is & 16" x 1/4" Pl.	3.64
L 92	2	9" Is & 16" x 5/16" Pl.	4.60
L 93	2	10" Is & 16" x 5/16" Pl.	4.60
L 94	2	12" Is & 16" x 3/8" Pl.	5.60
L 95	2	15" Is & 16" x 3/8" Pl.	7.00
L 96	2	18" Is & 16" x 3/8" Pl.	8.70
L 97	2	20" Is & 16" x 3/8" Pl.	10.00
L 98	2	24" Is & 16" x 3/8" Pl.	12.00



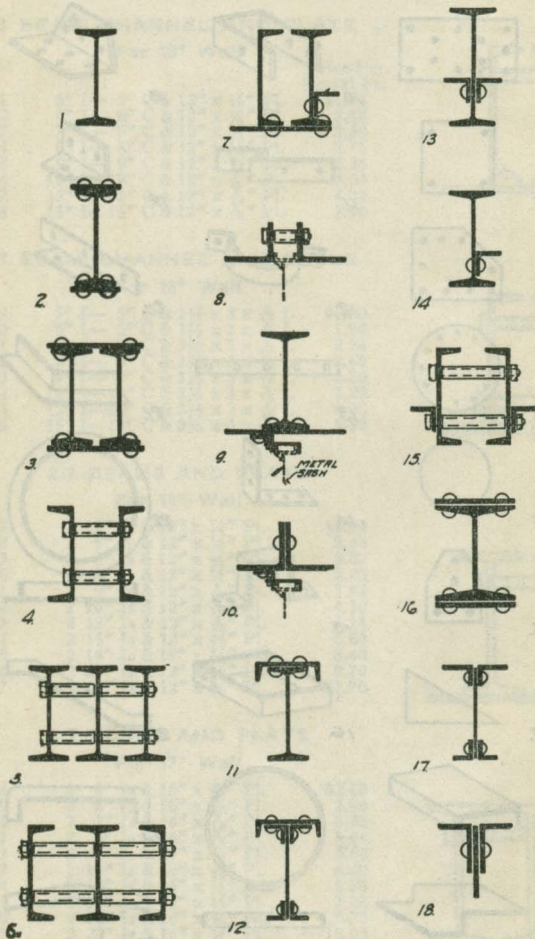
Write for Discount

PUNCHED BENT PLATES, ANGLES AND BARS



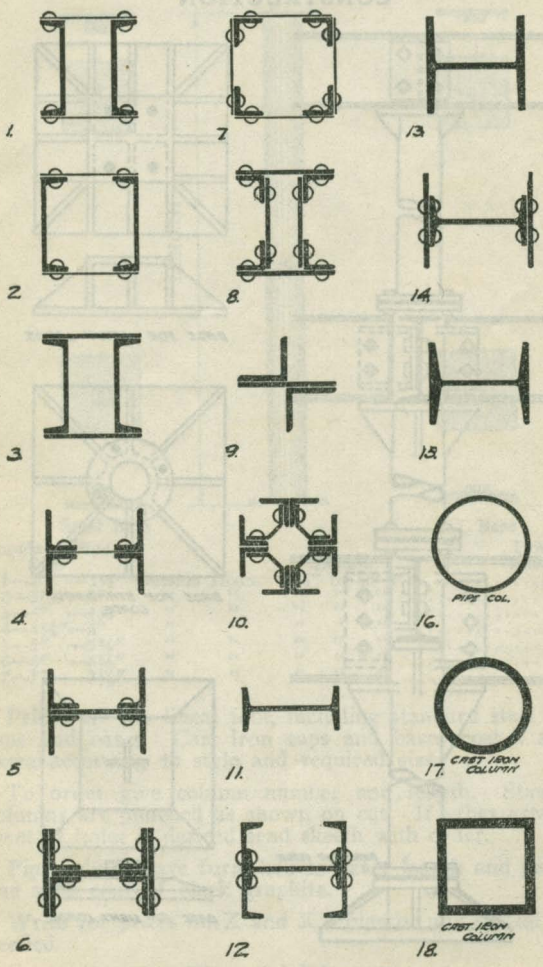
Prices on Above Material on Application
Send Sketch and Size of Material Wanted

PUNCHED BARS STANDARD BUILT SECTIONS



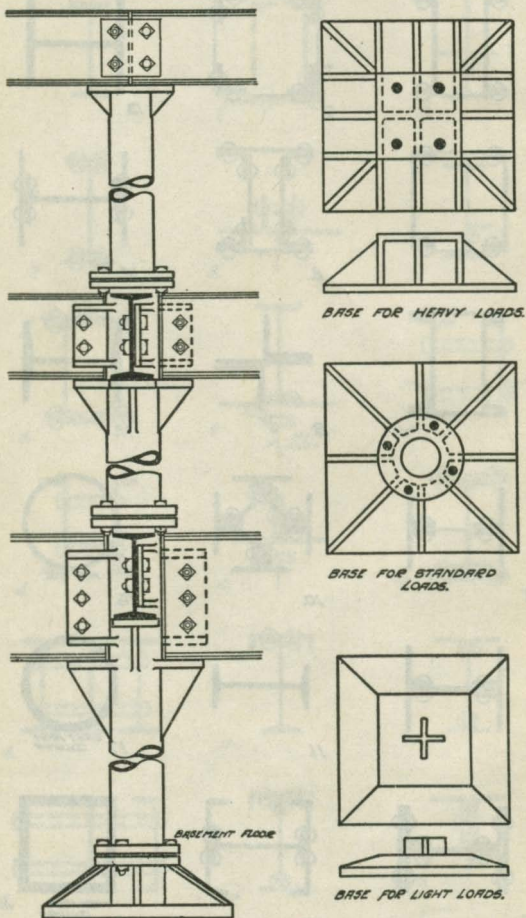
Prices on Application

STANDARD COLUMN SECTIONS



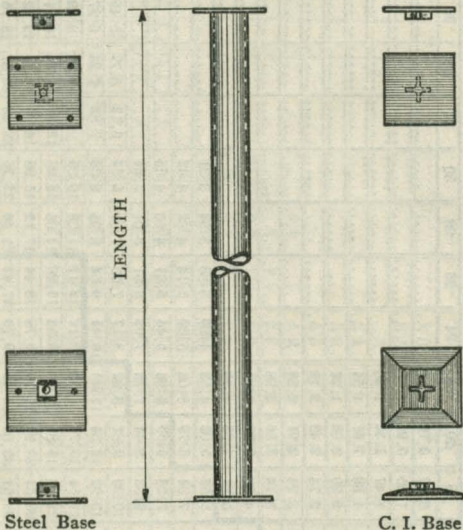
Prices on Application

STANDARD CAST IRON AND STEEL
CONSTRUCTION



Prices on Application

REPUBLIC STANDARD PIPE COLUMNS



Standard Pipe Size	Outside Diam.	Length	Price Per Lineal Ft.
C 1—3"	3½"	6'-6" to 18'-0"	\$1.00
C 2—3½"	4"	" " "	1.20
C 3—4"	4½"	" " "	1.40
C 4—4½"	5"	" " "	1.60
C 5—5"	5½"	" " "	1.80
C 6—6"	6½"	" " "	2.20
C 7—7"	7½"	" " "	2.80

Prices are per lineal foot, including standard steel plate caps and bases. Cast iron caps and bases cost a slight extra according to style and required size.

To order give column number and length. Standard columns are punched as shown on cut. If other arrangement of holes is desired send sketch with order.

Pipe columns are furnished to exact length and painted one shop coat of black graphite.

Write for prices on X and XX pipe or any special kind needed.

Write for Discount

THE REPUBLIC STRUCTURAL IRON WORKS CO.

SAFE LOADS, UNIFORMLY DISTRIBUTED, FOR STEEL I BEAMS, IN TONS OF 2,000 LBS.

For concentrated load at centre of beam take one-half amount given in table.

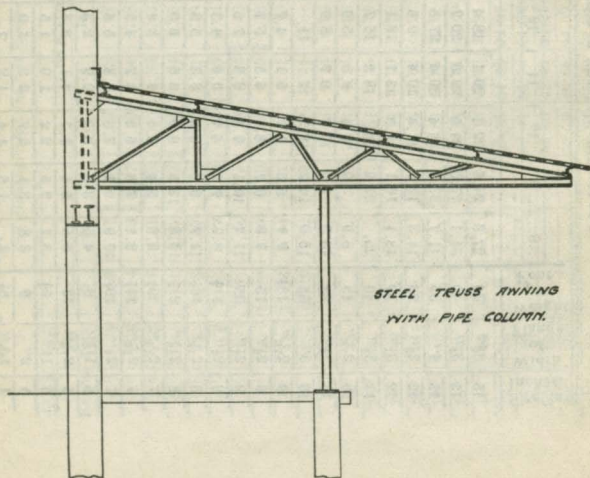
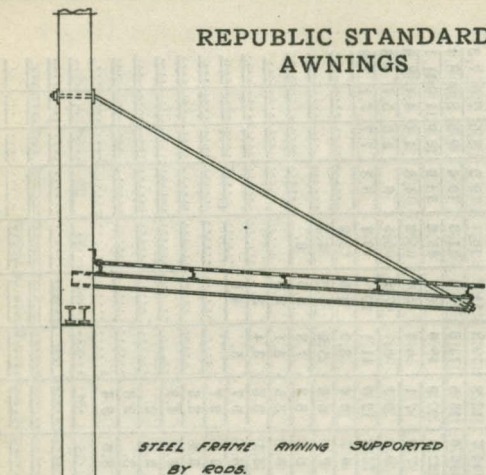
D'pth of Be ms	Wt. per Foot.	DISTANCE BETWEEN SUPPORTS IN FEET.															
		6	8	10	12	14	16	18	20	22	24	26	28	30	32	34	36
4"	7½	2.53	1.97	1.57	1.32	1.13	0.97	0.87	0.79
4"	10½	3.14	2.36	1.87	1.59	1.34	1.18	1.05	0.94
5"	9½	4.41	3.31	2.65	2.20	1.89	1.65	1.47	1.32	1.20
5"	14½	5.51	4.11	3.27	2.75	2.34	2.05	1.82	1.67	1.51
6"	12½	6.78	5.07	4.06	3.40	2.91	2.54	2.29	2.03	1.77
6"	17½	8.08	6.07	4.86	4.05	3.46	3.04	2.74	2.43	2.12
7"	15	9.65	7.24	5.79	4.83	4.14	3.63	3.24	2.91	2.58
7"	20	11.20	8.39	6.69	5.58	4.79	4.18	3.74	3.36	2.98
8"	18	12.83	9.64	7.71	6.41	5.51	4.80	4.30	3.83	3.36
8"	25½	15.63	11.72	9.39	7.77	6.71	5.84	5.07	4.63	4.19
9"	21	8.34	7.16	6.28	5.52	5.02	4.52	4.20	3.88	3.54	3.31
9"	35	11.14	9.54	8.33	7.34	6.70	6.06	5.60	5.14	4.66	4.42
10"	25	10.84	9.35	8.18	7.28	6.56	5.96	5.44	5.01	4.66	4.38
10"	40	14.14	12.20	10.58	9.53	8.44	7.76	7.09	6.51	6.01	5.61
12"	31½	16.34	14.04	12.24	10.90	9.81	8.92	8.17	7.55	7.01	6.54	6.13	5.77	5.46
12"	40	20.80	17.81	15.64	13.92	12.54	11.40	10.44	9.64	8.95	8.36	7.83	7.34	6.97
15"	42	25.54	22.51	19.69	17.54	15.79	14.34	13.12	12.11	11.28	10.50	9.86	9.31	8.79
15"	55	33.10	28.16	24.81	22.08	19.84	18.05	16.53	15.28	14.06	13.23	12.41	11.56	10.71
18"	55	39.95	34.24	29.97	26.64	23.97	21.79	19.78	18.44	17.12	15.98	14.98	13.84	12.62
18"	90	59.41	50.92	44.56	39.61	35.65	32.41	29.70	27.42	25.46	23.76	22.28	20.57	18.75
20"	65	52.43	43.64	38.20	33.97	30.54	27.76	25.47	23.51	21.81	20.36	19.12	17.96	16.99
20"	75	56.79	48.68	44.59	39.57	35.96	32.64	29.71	27.61	25.64	23.88	22.39	20.94	19.64
24"	80	76.24	65.40	57.24	50.87	45.75	41.61	38.16	35.22	32.71	30.52	28.61	26.93	25.41
24"	100	86.81	74.60	65.24	58.07	52.15	47.41	43.56	40.21	37.32	34.72	32.62	30.73	29.02

SAFE LOADS, UNIFORMLY DISTRIBUTED, FOR STEEL CHANNELS, IN TONS OF 2,000 LBS.

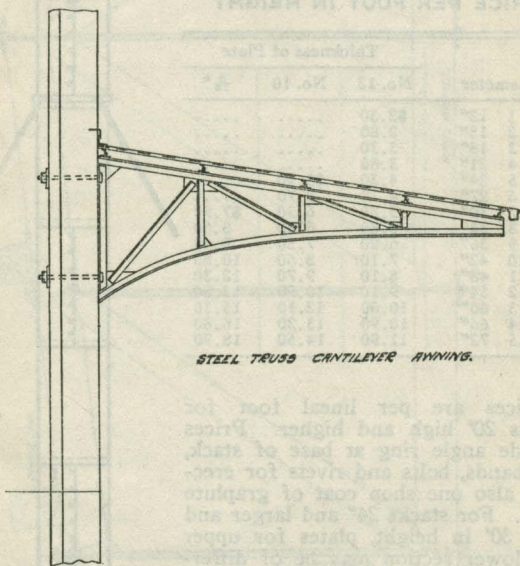
For concentrated load at centre of channel take one-half amount in table.

Size in Inches.	Width of Flange.	Weight per Foot.	LENGTH OF SPAN IN FEET.															
			8	9	10	11	12	13	14	15	16	18	20	22	24	26	28	30
15	3 3/4"	33	27.6	24.6	22.1	20.1	18.4	17.	15.8	14.7	13.8	12.3	11.	10.	9.2	8.5	7.9	7.3
15	3 1/2"	40	31.1	27.6	24.9	22.6	20.7	19.1	17.8	16.6	15.5	13.8	12.4	11.3	10.4	9.5	8.9	8.2
15	4"	55	41.7	37.1	33.4	30.4	27.8	25.7	23.9	22.3	20.9	18.6	16.7	15.2	13.9	12.9	11.9	11.1
12	2 3/4"	20	14.3	12.7	11.4	10.4	9.6	8.8	8.2	7.6	7.1	6.4	5.7	5.2	4.8	4.4	4.1	3.8
12	3 1/4"	30	18.1	16.1	14.5	13.1	12.1	11.1	10.3	9.6	9.1	8.	7.2	6.5	6.	5.5	5.1	4.8
12	3 1/2"	40	25.	22.2	20.	18.2	16.7	15.4	14.3	13.3	12.5	11.1	10.	9.1	8.3	7.7	7.1	6.6
10	2 3/8"	15	8.9	7.9	7.1	6.5	5.9	5.5	5.1	4.7	4.4	3.9	3.5	3.2	3.	2.8	2.7	2.6
10	2 1/2"	25	13.3	11.9	10.7	9.7	8.9	8.2	7.6	7.1	6.6	5.9	5.3	4.8	4.4	4.1	3.9	3.7
10	3"	35	16.6	14.7	13.3	12.	11.	10.2	9.5	8.8	8.3	7.3	6.6	6.	5.6	5.3	5.1	4.9
9	2 7/8"	13 1/2	7.1	6.3	5.7	5.1	4.7	4.4	4.	3.7	3.5	3.1	2.8	2.6	2.5	2.4	2.3	2.2
9	2 3/4"	15	7.6	6.7	6.1	5.5	5.1	4.7	4.3	4.1	3.8	3.4	3.	2.8	2.7	2.6	2.5	2.4
9	2 1/2"	25	11.4	10.1	9.1	8.3	7.6	7.	6.5	6.	5.7	5.	4.6	4.3	4.1	4.	3.9	3.8
8	2 1/2"	11 1/2	8.7	7.2	6.2	5.4	4.3	3.6	3.1	2.9	2.7	2.5	2.3	2.2	2.1	2.	1.9	1.8
8	2 3/8"	16 1/2	11.7	9.8	8.3	7.3	5.8	4.9	4.2	3.9	3.6	3.2	2.9	2.7	2.6	2.5	2.4	2.3
8	2 1/8"	21 1/2	13.8	11.5	9.9	8.6	6.9	5.7	4.9	4.6	4.3	3.8	3.5	3.3	3.2	3.1	3.	2.9
7	2 1/8"	9 1/2	6.5	5.4	4.6	4.	3.2	2.7	2.3	2.1	2.	1.8	1.7	1.6	1.5	1.4	1.3	1.2
7	2 1/2"	14 1/2	9.1	7.5	6.5	5.7	4.5	3.8	3.2	3.	2.8	2.5	2.3	2.2	2.1	2.	1.9	1.8
7	2 3/4"	19 1/2	10.9	9.1	7.8	6.8	5.4	4.5	3.9	3.6	3.4	3.	2.8	2.7	2.6	2.5	2.4	2.3
6	1 3/8"	8	4.6	3.8	3.3	2.9	2.3	1.9	1.6	1.5	1.4	1.3	1.2	1.1	1.	0.9	0.8	0.7
6	2 3/16"	13	6.5	5.4	4.7	4.1	3.3	2.7	2.3	2.1	2.	1.8	1.7	1.6	1.5	1.4	1.3	1.2
5	1 1/2"	6 1/2	3.1	2.6	2.2	1.9	1.5	1.3	1.1	1.	0.9	0.8	0.7	0.6	0.5	0.4	0.3	0.2
5	2"	9	3.8	3.1	2.7	2.3	1.9	1.5	1.3	1.2	1.1	1.	0.9	0.8	0.7	0.6	0.5	0.4
4	1 5/16"	5 1/2	2.	1.6	1.4	1.2	1.	0.8	0.7	0.6	0.5	0.4	0.3	0.2	0.2	0.1	0.1	0.1
4	1 1/4"	7 1/2	2.4	2.	1.7	1.5	1.2	1.	0.8	0.7	0.6	0.5	0.4	0.3	0.2	0.2	0.1	0.1

REPUBLIC STANDARD
AWNINGS



REPUBLIC STANDARD
AWNINGS



STEEL TRUSS CANTILEVER AWNING.

PRICES ON AWNING FRAMES

	Prices Per Square Ft.
Awnings 10' to 15' wide.....	\$0.50
“ 15' to 20' wide.....	.60
“ 20' to 25' wide.....	.70

For prices for covering frames with corrugated iron roofing, see page 42.

If pipe column supports are required add prices for pipe columns, page 11.

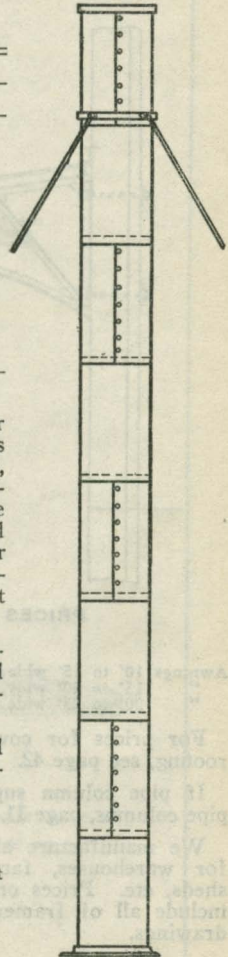
We manufacture all styles of awnings, canopies, etc., for warehouses, factories, shipping platforms, freight sheds, etc. Prices on awnings are without covering but include all of framework, purlins, anchors and erection drawings.

Write for Discounts

STANDARD GUYED STACKS

PRICE PER FOOT IN HEIGHT

Diameter	Thickness of Plate		
	No. 12	No. 10	$\frac{3}{16}$ "
S 1 12"	\$2.30
S 2 15"	2.80
S 3 18"	3.30
S 4 21"	3.80
S 5 24"	4.30	\$5.10
S 6 27"	4.70	5.70
S 7 30"	5.30	6.30	\$7.90
S 8 33"	5.80	6.90	8.60
S 9 36"	6.20	7.50	9.40
S 10 42"	7.10	8.60	10.80
S 11 48"	8.10	9.70	12.30
S 12 54"	9.10	10.90	13.80
S 13 60"	10.00	12.10	15.30
S 14 66"	10.90	13.20	16.80
S 15 72"	11.90	14.50	18.90



Prices are per lineal foot for stacks 20' high and higher. Prices include angle ring at base of stack, guy bands, bolts and rivets for erection, also one shop coat of graphite paint. For stacks 24" and larger and over 30' in height, plates for upper and lower section may be of different thickness. Use the different list for figuring.

Small stacks can be shipped complete, larger sizes in sections marked for erection purposes. For side ladder see list page 56.

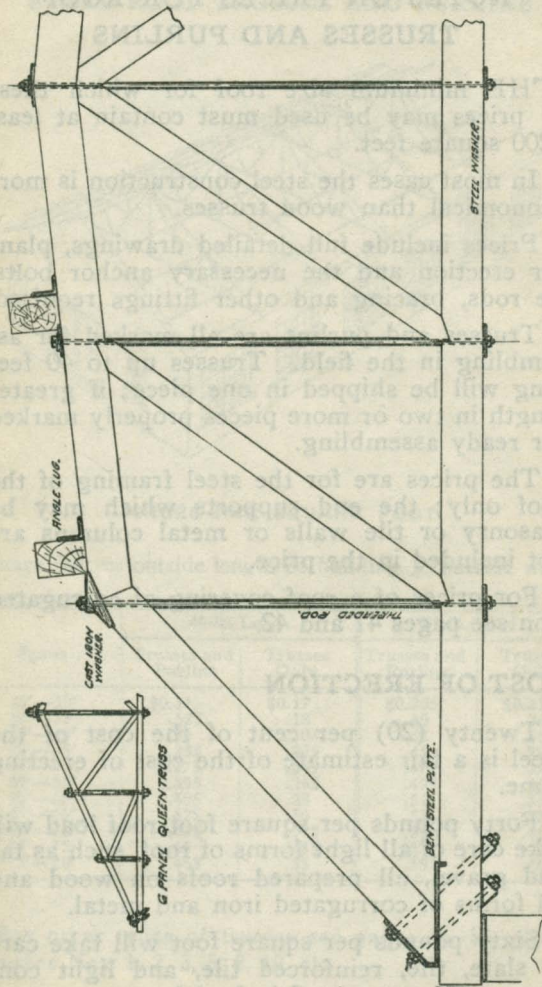
Send plans for estimate on all larger and special stacks, guys, anchors, etc.

PRICES ON GUY LINES

$\frac{1}{4}$ " Galvanized.....	\$1.75	per 100 feet
$\frac{3}{8}$ " ".....	2.25	" " "
$\frac{1}{2}$ " ".....	2.75	" " "
$\frac{3}{4}$ " ".....	3.75	" " "
$\frac{7}{8}$ " ".....	4.50	" " "

Write for Discount

REPUBLIC STANDARD FITTINGS FOR WOOD TRUSSES



We manufacture Rods, Washers, Bent and Forged Bars, Cast Iron Shoes, Angle and Bar Ties, etc., for all styles of wooden truss roof construction. Send list of quantities or detail of truss for quotation.

NOTES ON PRICES FOR ROOF TRUSSES AND PURLINS

THE minimum size roof for which these prices may be used must contain at least 1200 square feet.

In most cases the steel construction is more economical than wood trusses.

Prices include full detailed drawings, plans for erection and the necessary anchor bolts, tie rods, bracing and other fittings required.

Trusses and purlins are all marked for assembling in the field. Trusses up to 40 feet long will be shipped in one piece; if greater length in two or more pieces properly marked for ready assembling.

The prices are for the steel framing of the roof only; the end supports which may be masonry or tile walls or metal columns are not included in the price.

For prices of a roof covering of corrugated iron see pages 41 and 42.

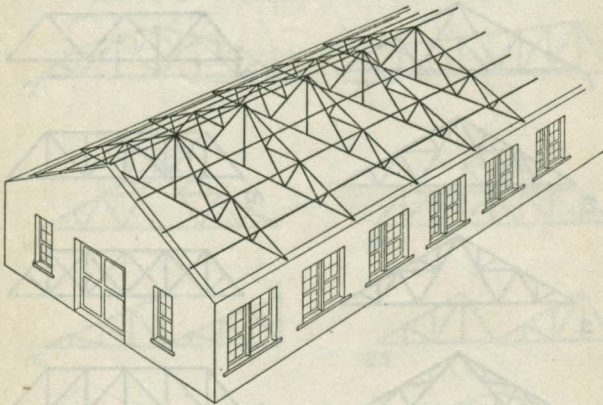
COST OF ERECTION

Twenty (20) per cent of the cost of the steel is a fair estimate of the cost of erecting same.

Forty pounds per square foot roof load will take care of all light forms of roof, such as tar and gravel, all prepared roofs on wood and all forms of corrugated iron and metal.

Sixty pounds per square foot will take care of slate, tile, reinforced tile, and light concrete roofs not over 2 inch slabs.

STEEL ROOF TRUSSES AND PURLINS



PRICES PER SQUARE FOOT

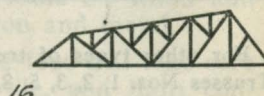
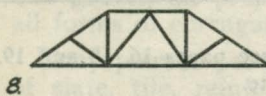
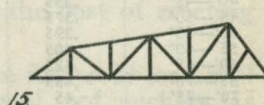
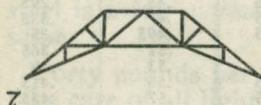
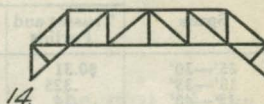
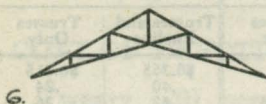
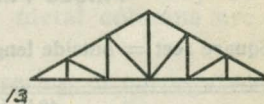
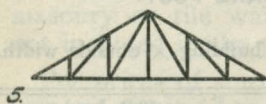
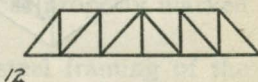
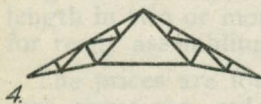
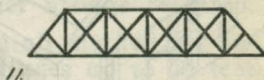
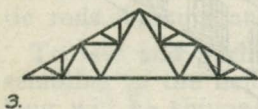
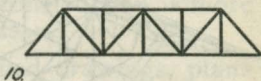
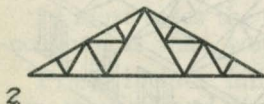
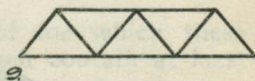
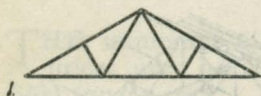
Square feet = outside length of building \times outside width.

Spans	40-lb. Load		60-lb. Load	
	Trusses and Purlins	Trusses Only	Trusses and Purlins	Trusses Only
25'—30'	\$0.31	\$0.17	\$0.365	\$0.215
30'—35'	.325	.18	.40	.24
35'—40'	.34	.205	.42	.26
40'—45'	.355	.225	.45	.295
45'—50'	.375	.245	.47	.325
50'—55'	.395	.265	.495	.35
55'—60'	.405	.28	.51	.365
60'—65'	.425	.30	.53	.39
65'—70'	.435	.315	.55	.415
70'—75'	.45	.335	.57	.435
75'—80'	.465	.35	.585	.46

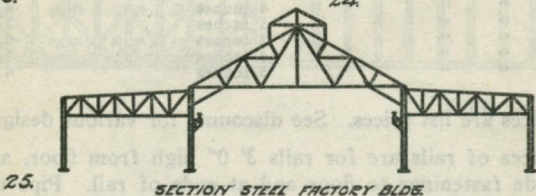
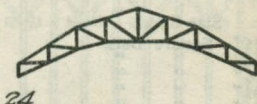
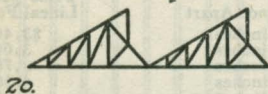
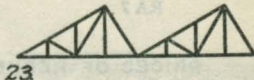
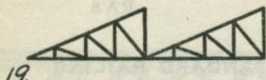
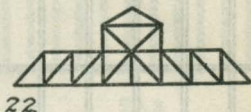
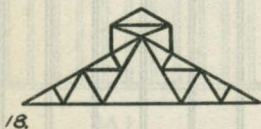
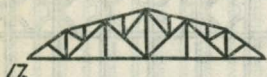
For other types of trusses see pages 16, 18 and 19.
Trusses Nos. 1, 2, 3, 5, 8, 10, etc.

Write for Discount

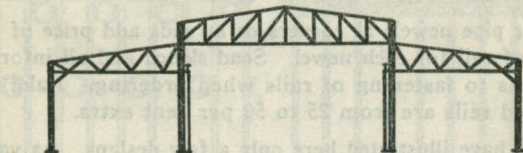
REPUBLIC STANDARD STEEL TRUSSES



REPUBLIC STANDARD STEEL TRUSSES

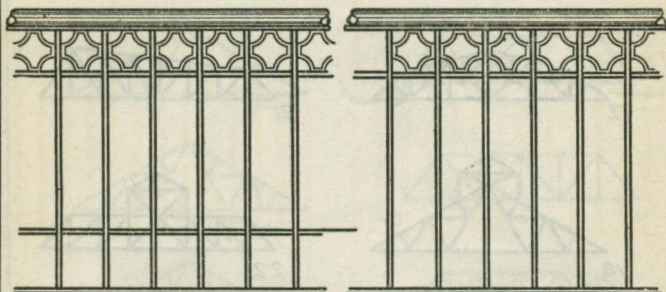


SECTION STEEL FACTORY BLDG



SECTION STEEL FACTORY BLDG

REPUBLIC STANDARD RAILS



RA 7

RA 8

PRICES OF REPUBLIC STANDARD RAILING

Size Bars	Distance Apart	Price per Lineal Ft.
1/2" Square Bars	3 inches	\$3.40
1/2" " "	4 inches	3.00
1/2" " "	5 inches	2.70
5/8" " "	3 inches	4.50
5/8" " "	4 inches	4.00
5/8" " "	5 inches	3.40
3/4" " "	3 inches	6.00
3/4" " "	4 inches	5.10
3/4" " "	5 inches	4.30

Prices are list prices. See discounts for various designs.

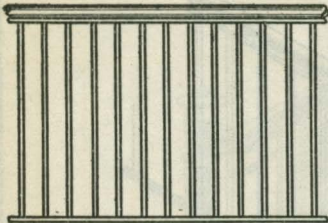
Prices of rails are for rails 3' 0" high from floor, and include fastenings to floor and at ends of rail. Pipe top of rail size 1 1/2".

For pipe newels at corners or at ends add price of two feet of rail for each newel. Send sketch and all information as to fastening of rails when ordering. Rake and curved rails are from 25 to 50 per cent extra.

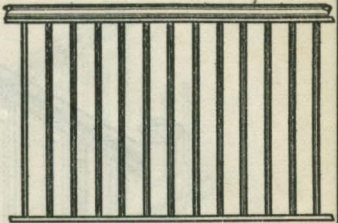
We have illustrated here only a few designs. As variations and size of rails are unlimited, send plans and specifications for prices on any special designs.

Write for Discount

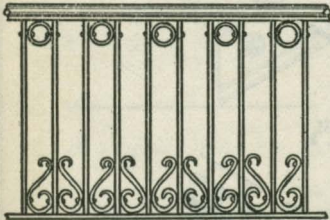
REPUBLIC STANDARD RAILS



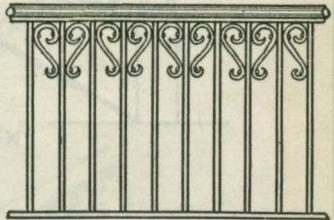
RA 1



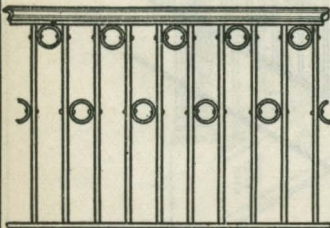
RA 2



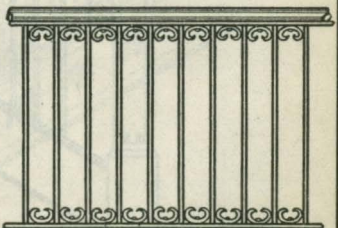
RA 3



RA 4

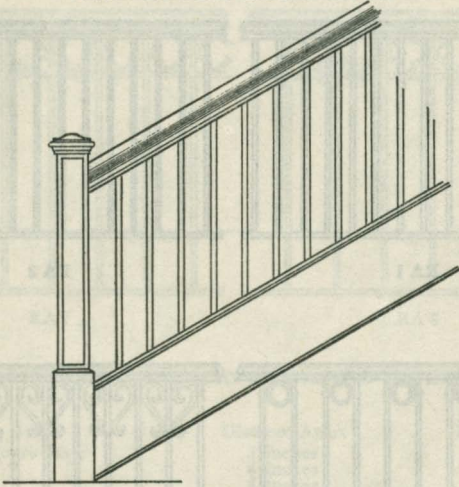


RA 5

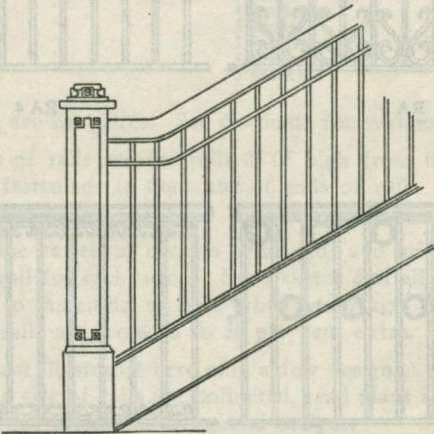


RA 6

TYPES OF STAIRS AND RAILS FOR OFFICE
AND STORE BUILDINGS



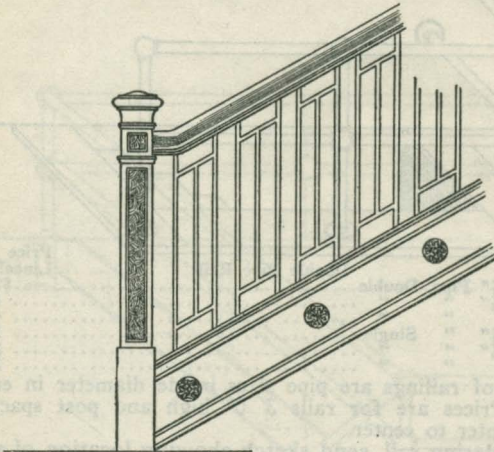
No. 1



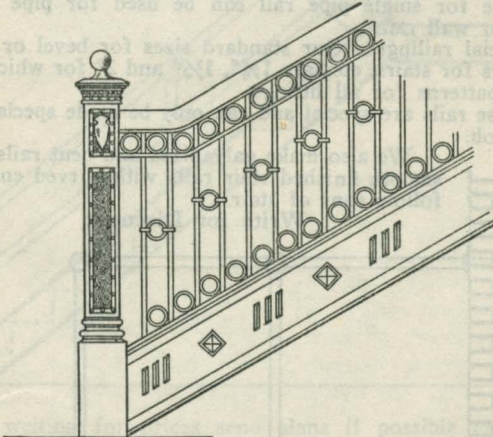
No. 2

Prices on Application

TYPES OF STAIRS AND RAILS FOR OFFICE AND STORE BUILDINGS



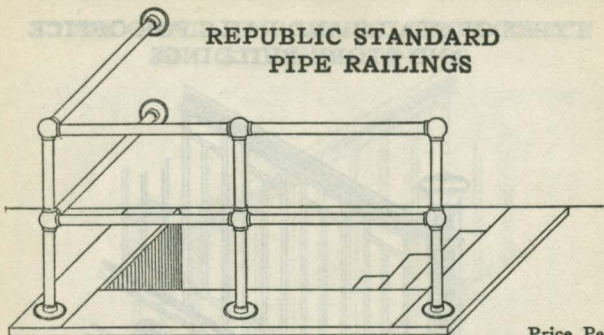
No. 3



No. 4

Prices on Application

REPUBLIC STANDARD
PIPE RAILINGS



Double Pipe Rail

Price Per
Lineal Ft.

PR 1—1¼" Pipe, Double.....	\$2.50
PR 2—1½" " "	3.00
PR 3—2" " "	4.00
PR 4—1¼" " Single.....	1.60
PR 5—1½" " "	2.00
PR 6—2" " "	2.80

Sizes of railings are pipe sizes inside diameter in each case. Prices are for rails 3' 0" high and post spacing 5' 0" center to center.

In ordering rail, send sketch showing location of rail and posts and any special detail required.

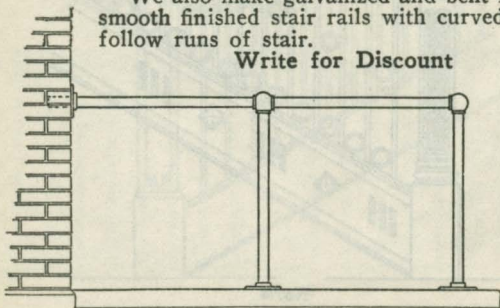
Price for single pipe rail can be used for pipe hand rails or wall rails.

Special railings: Our standard sizes for bevel or rake railings for stairs, etc., are 1¼", 1½" and 2" for which we have patterns for all fittings.

These rails are special and can only be made special for each job.

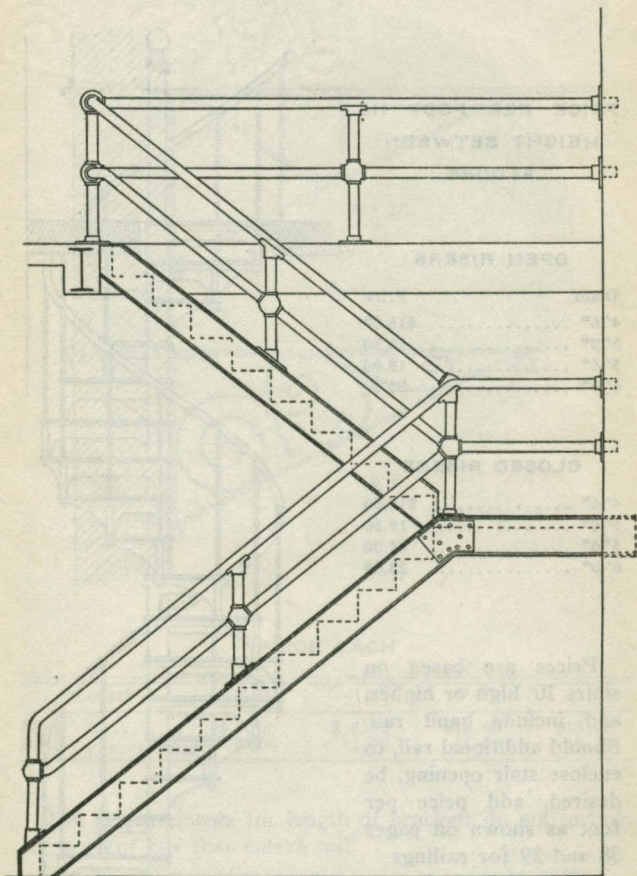
We also make galvanized and bent rails and smooth finished stair rails with curved ends to follow runs of stair.

Write for Discount



Single Pipe Rail

REPUBLIC STANDARD FACTORY AND
WAREHOUSE STAIRS



In writing for prices send plans if possible or send sketch of stairs, giving height between floors and any information as to special detail.

REPUBLIC STANDARD SPIRAL STAIRS

PRICE PER FOOT IN
HEIGHT BETWEEN
FLOORS

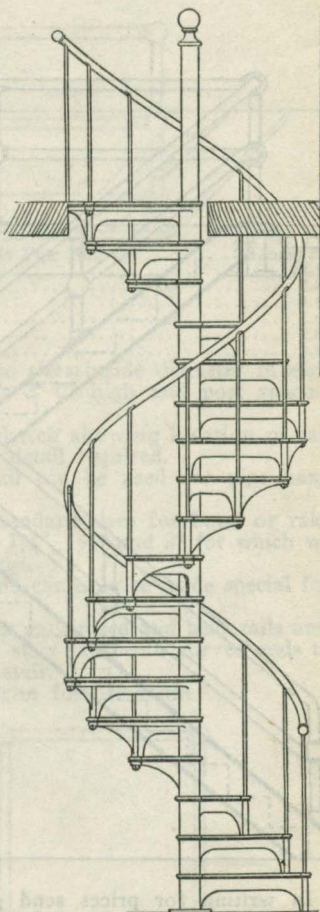
OPEN RISERS

Diam.	Price
4'-6"	\$15.00
5'-0"	16.50
5'-6"	18.00
6'-0"	20.00

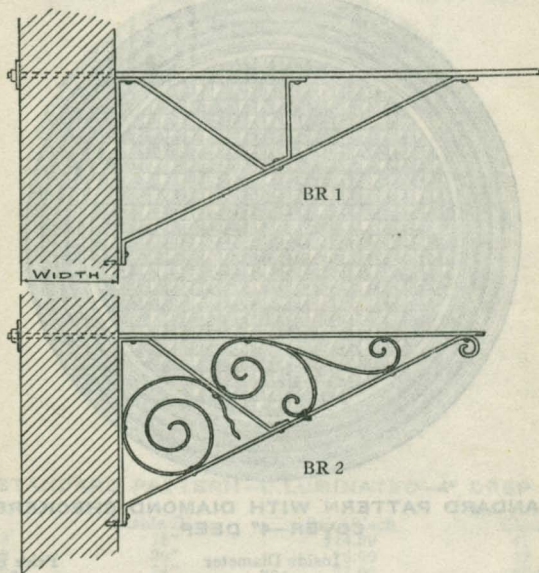
CLOSED RISERS

4'-6"	\$18.00
5'-0"	19.50
5'-6"	21.00
6'-0"	23.00

Prices are based on stairs 10' high or higher, and include hand rail. Should additional rail, to enclose stair opening, be desired, add price per foot as shown on pages 38 and 39 for railings.



REPUBLIC STANDARD BRACKETS



PRICE EACH

Length	3' 0"	4' 0"	5' 0"	6' 0"
BR 1	\$ 7.00	\$ 8.50	\$12.00	\$15.00
BR 2	9.00	11.00	15.00	18.50

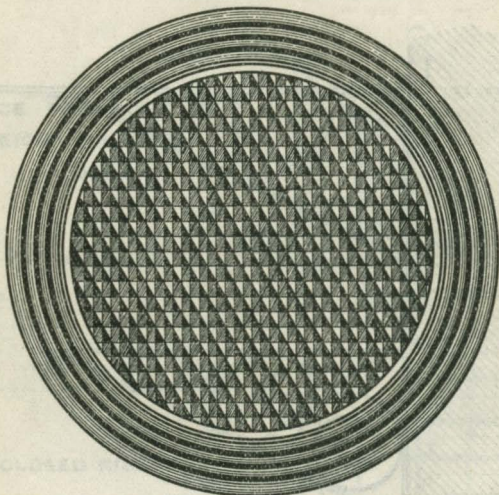
The measurements for length of brackets do not include the part of bar that enters wall.

When ordering specify thickness and kind of wall.

Painted one coat of black at shop.

Write for Discount

REPUBLIC STANDARD COAL HOLE RINGS
AND COVERS



STANDARD PATTERN WITH DIAMOND CHECKERED
COVER—4" DEEP

No.	Inside Diameter	Price Each
CR 1	18"	\$ 8.00
CR 2	20"	10.00
CR 3	24"	14.00
CR 4	30"	18.00

EXTRA HEAVY PATTERN—6" DEEP

CR 5	18"	\$12.00
CR 6	20"	14.00
CR 7	24"	18.00

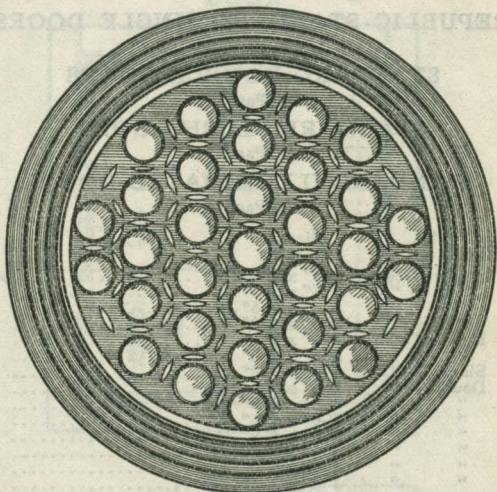
These covers are the finest possible to make, clean and true to pattern. All covers are furnished with angle locking device with wing nuts as shown on page following, and can be securely locked. Cover CR 4 has two lifting rings in top cover. Cover CR 5 can be furnished with ventilated tops at same price.

All these patterns can be altered to suit specifications such as depth of ring, weight, etc.

We manufacture steel round plate chutes which are riveted to ring. Send sketch when writing for price.

Write for Discount

**REPUBLIC STANDARD COAL HOLE RINGS
AND COVERS**



STANDARD PATTERN—ILLUMINATED—4" DEEP

No.	Inside Diam.	Price Each	No. of 1 1/4" Glass
CR 8	18"	\$14.00	41
CR 9	20"	16.00	45
CR 10	24"	22.00	67
CR 11	30"	32.00	86

EXTRA HEAVY PATTERN—ILLUMINATED—6" DEEP

No.	Inside Diam.	Price Each	1 1/4" Glass
CR 12	18"	\$16.00	30
CR 13	20"	18.00	46
CR 14	24"	25.00	46

Illuminated covers are painted white inside. The glasses are firmly cemented in place and will not work loose.

All sizes are carried in stock and can be shipped promptly.

Write for Discount

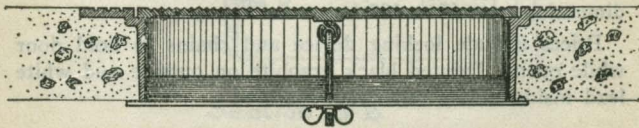


Illustration showing lock furnished on all Coal Hole Rings and Covers

LIST PRICES

REPUBLIC STANDARD SINGLE DOORS

See Page 33

STANDARD DOUBLE DOORS

See Page 34

STANDARD FLUSH DOORS

See Page 35

STANDARD ILLUMINATED DOORS

See Page 36

No.		Size of Opening	Price Each
SD 1	Single Door	2'-6" x 2'-6"	\$ 45.00
SD 2	" "	2'-6" x 3'-0"	53.00
SD 3	" "	2'-6" x 3'-6"	60.00
SD 4	" "	2'-6" x 4'-0"	68.00
SD 5	Double	2'-6" x 4'-0"	79.00
SD 6	" "	2'-6" x 5'-0"	86.00
SD 7	Single	3'-0" x 3'-0"	62.00
SD 8	Double	3'-0" x 3'-6"	74.00
SD 9	" "	3'-0" x 4'-0"	82.00
SD 10	" "	3'-0" x 4'-6"	90.00
SD 11	" "	3'-0" x 5'-0"	96.00
SD 12	" "	3'-0" x 5'-6"	105.00
SD 13	" "	3'-0" x 6'-0"	114.00
SD 14	" "	3'-6" x 3'-6"	84.00
SD 15	" "	3'-6" x 4'-0"	93.00
SD 16	" "	3'-6" x 4'-6"	102.00
SD 17	" "	3'-6" x 5'-0"	110.00
SD 18	" "	3'-6" x 5'-6"	120.00
SD 19	" "	3'-6" x 6'-0"	130.00
SD 20	" "	4'-0" x 4'-0"	105.00
SD 21	" "	4'-0" x 4'-6"	116.00
SD 22	" "	4'-0" x 5'-0"	126.00
SD 23	" "	4'-0" x 5'-6"	135.00
SD 24	" "	4'-0" x 6'-0"	146.00
SD 25	" "	4'-6" x 4'-6"	129.00
SD 26	" "	4'-6" x 5'-0"	141.00
SD 27	" "	4'-6" x 5'-6"	152.00
SD 28	" "	4'-6" x 6'-0"	163.00
SD 29	" "	5'-0" x 5'-0"	155.00
SD 30	" "	5'-0" x 5'-6"	166.00
SD 31	" "	5'-0" x 6'-0"	180.00
SD 32	" "	5'-0" x 6'-6"	191.00

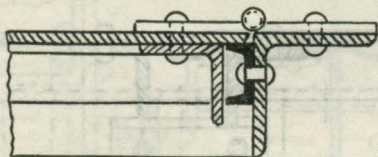
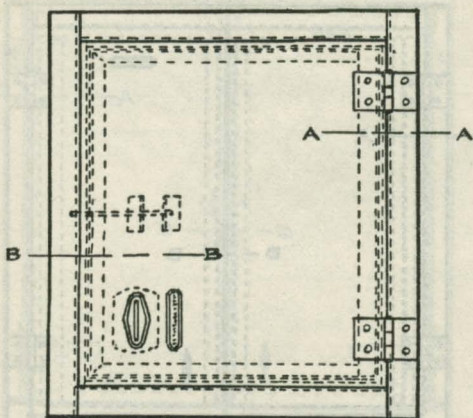
Size of door is clear opening inside of frame. Outside dimensions are 6" to 10" larger each way.

Prices include locking device and chains to hold door while open. Painted black graphite on outside and white lead inside unless otherwise specified.

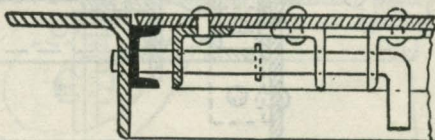
Write for Discount Sheet

CLEVELAND, OHIO

REPUBLIC STANDARD SIDEWALK SINGLE DOOR



Section A-A



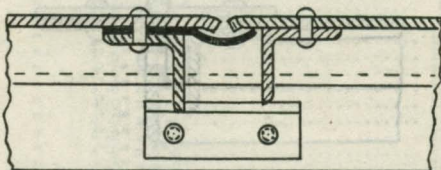
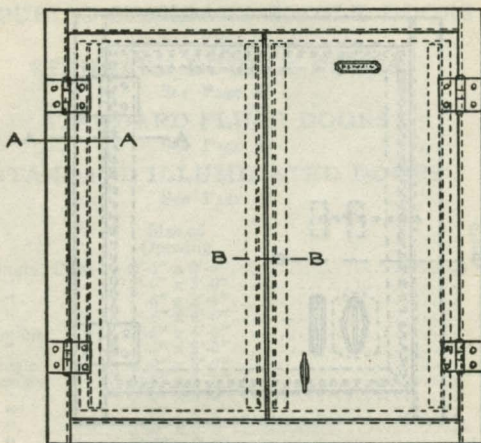
Section B-B

Plain or Rough Plate Top

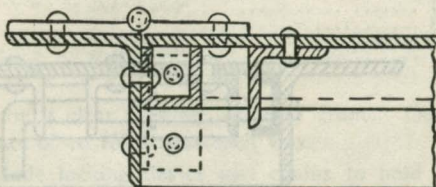
See Prices on Page 32

THE REPUBLIC STRUCTURAL IRON WORKS CO.

REPUBLIC STANDARD SIDEWALK DOUBLE
DOOR



Section B-B

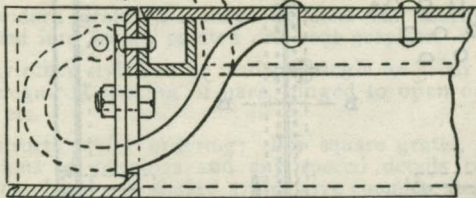
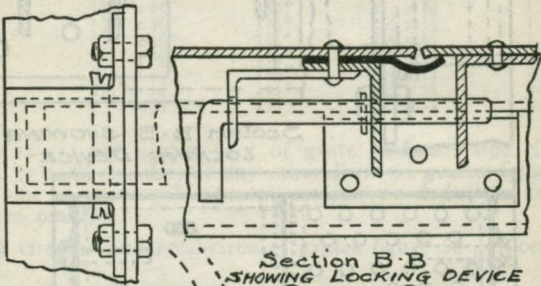
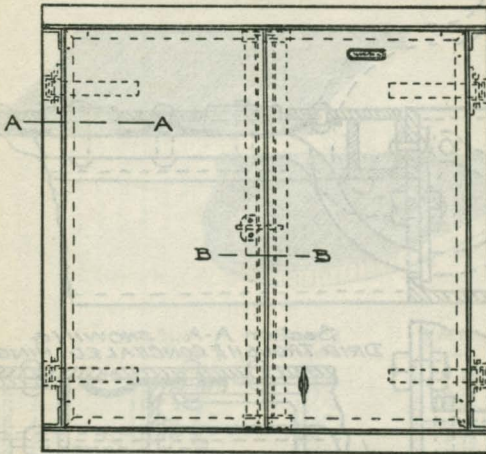


Section A-A

Showing Drip Trough and Hinge
Plain or Rough Plate Top

See Prices on Page 32

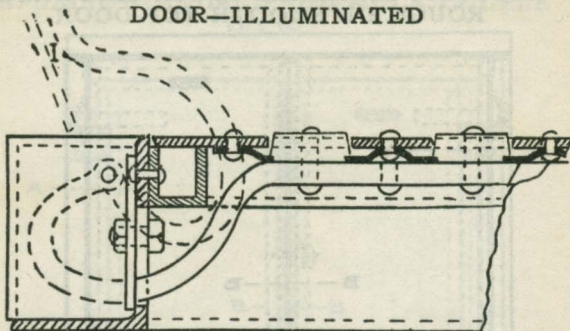
REPUBLIC STANDARD FLUSH SIDEWALK
ROUGH OR SMOOTH TOP DOOR



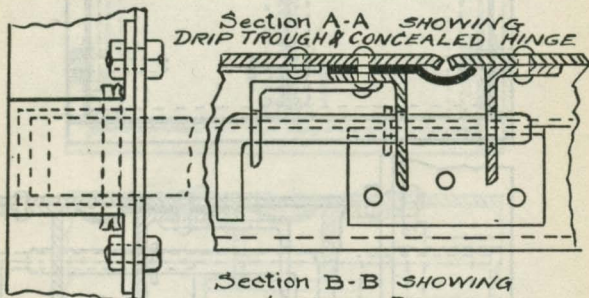
Section A-A
Showing Drip Trough and Concealed Hinge
See Prices on Page 32

THE REPUBLIC STRUCTURAL IRON WORKS CO.

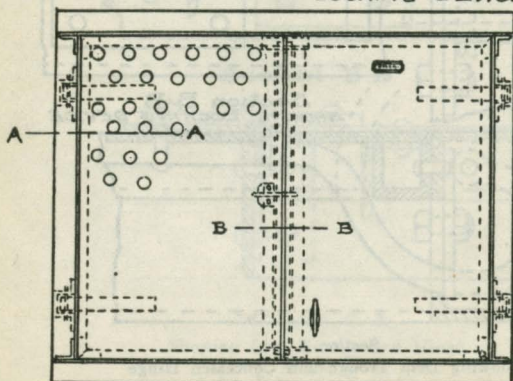
REPUBLIC STANDARD FLUSH SIDEWALK
DOOR—ILLUMINATED



Section A-A SHOWING
DRIP TROUGH & CONCEALED HINGE

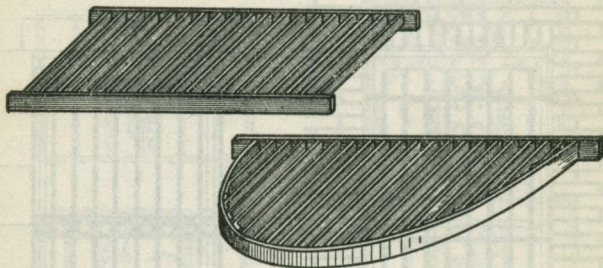


Section B-B SHOWING
LOCKING DEVICE



See Prices on Page 32

REPUBLIC STANDARD AREA GRATINGS



No.	Size of Bars	Spacing of Bars	Size of Frame	Price Per Sq. Ft.
GR 1	1" x 1/4"	1 1/2"	2 x 5/8"	\$1.20
GR 2	1 1/4" x 1/4"	1 1/2"	2 x 5/8"	1.25
GR 3	1 1/2" x 1/4"	1 1/2"	2 x 5/8"	1.30
GR 4	1 1/4" x 5/8"	1 1/2"	2 x 5/8"	1.30
GR 5	1 1/2" x 5/8"	1 1/2"	2 x 3/8"	1.35
GR 6	2" x 5/8"	1 1/2"	2 x 3/8"	1.70
GR 7	1 1/2" x 3/8"	1 1/2"	2 x 3/8"	1.50
GR 8	1 3/4" x 3/8"	1 1/2"	2 1/2 x 1/2"	1.70
GR 9	2" x 3/8"	1 1/2"	2 1/2 x 1/2"	1.95
GR 10	2 1/2" x 3/8"	1 1/2"	2 1/2 x 1/2"	2.50
GR 11	2" x 1/2"	1 1/2"	2 1/2 x 1/2"	2.50
GR 12	2 1/2" x 1/2"	1 1/2"	2 1/2 x 1/2"	3.20
GR 13	3" x 1/2"	1 1/2"	2 1/2 x 1/2"	4.00

Prices are per square foot of grate surface. For circular, or semi-circular, or any other form of grates, figure the same as rectangular grates, making no deduction for corners omitted.

For circular and semi-circular grates figure 50 per cent extra.

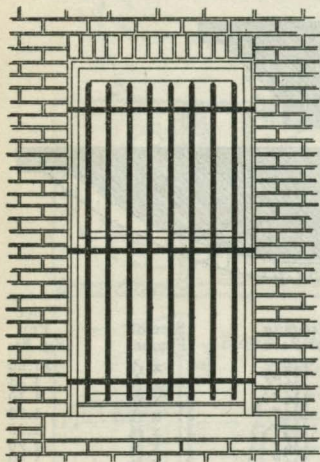
Standard grates are made of steel bar mortised and tenoned into frame, painted one coat graphite.

Any other style can be made, as angle or Z bar frames, any required spacing of bars, hinged to open on either side, etc.

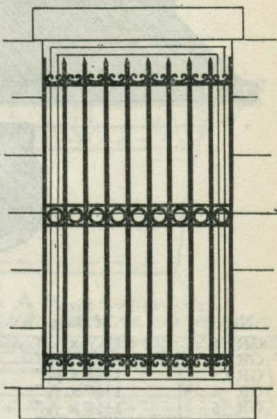
Instructions for ordering: For square grates, give dimensions of openings and any special details required; for round and odd shaped grates give complete description and sketch.

Write for Discount Sheet

REPUBLIC STANDARD WINDOW GUARDS



Plain



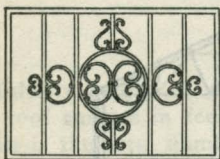
Ornamental

			Center to Center of Bar	Price per Square Ft.
GA 1	1/2"	Round Bar	3 inches	\$0.90
GA 2	5/8"	" "	3 inches	1.20
GA 3	3/4"	" "	3 inches	1.50
GA 4	7/8"	" "	3 inches	2.00
GA 5	1/2"	" "	4 inches	.80
GA 6	5/8"	" "	4 inches	.90
GA 7	3/4"	" "	4 inches	1.40
GA 8	7/8"	" "	4 inches	1.80
GA 9	1/2"	" "	5 inches	.70
GA 10	5/8"	" "	5 inches	1.00
GA 11	3/4"	" "	5 inches	1.20
GA 12	7/8"	" "	5 inches	1.60
GA 13	1/2"	" "	6 inches	.60
GA 14	5/8"	" "	6 inches	.90
GA 15	3/4"	" "	6 inches	1.20
GA 16	7/8"	" "	6 inches	1.40

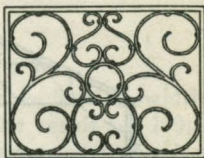
Prices are for guards containing 10 square feet or more. Send sketch when ordering, showing style of fastener desired. Hinged guards and locks extra. For square bar guards add 25 per cent.

Write for Discount

REPUBLIC STANDARD GRILLS AND WICKETS
GRILLS



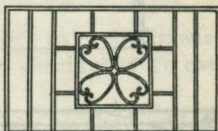
1



2

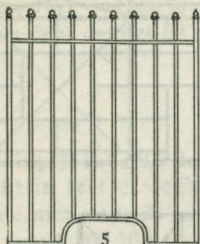


3

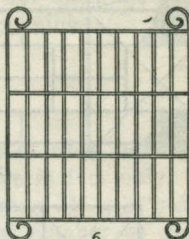


4

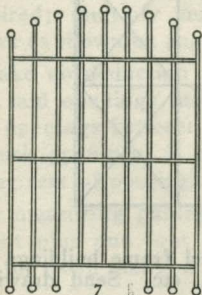
WICKETS



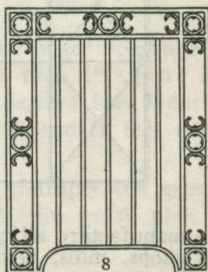
5



6



7



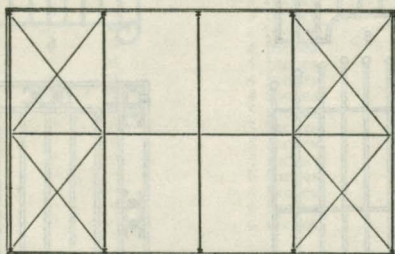
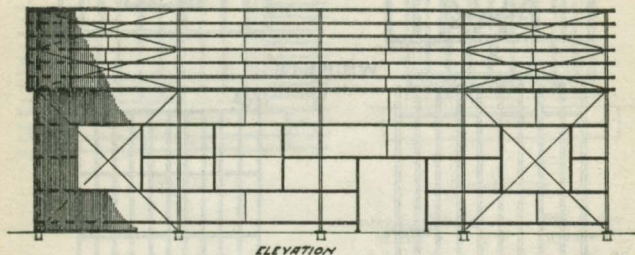
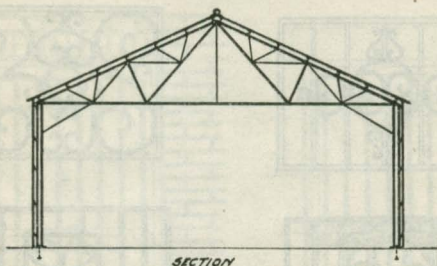
8

Price per square foot \$4.00. Painted dead black.
We can furnish electro plate or any desired finish.

Write for Discount

THE REPUBLIC STRUCTURAL IRON WORKS CO.

STEEL FRAME BUILDING—CORRUGATED
IRON COVERED



We manufacture all types of steel frame buildings for forge shops, mills, machine shops, etc. Send drawings for estimate.

We submit special designs to responsible parties on receipt of inquiry. Always give full description of what is required.

RULES FOR ESTIMATING CORRUGATED IRON**ROOFS**

Multiply length of roof surface in feet by width of the roof surface in feet; divide the result by 100; the result is the total number of squares required. Multiply the number of squares by cost per square, as shown on page 42.

For hips and valleys add one foot to each dimension for the extra material required, so sheets may be cut to fit in the field.

Do not deduct for any opening in roof under 25 square feet; for any hole or opening between 25 and 50 square feet deduct $\frac{1}{2}$ of opening; for openings over 80 square feet deduct 80 per cent of openings.

SIDING

Multiply the full length in feet of each side by the height in feet of each side. Figure in feet only; thus, if side measures 20' 6" x 31' 6" figure 21' x 32'; divide the result by 100 to get the total number of squares required; multiply number of squares by cost per square as shown on page 42.

Make no deduction for doors or other openings unless said openings measure more than 10 square feet. For openings between 10 and 30 square feet deduct $\frac{1}{2}$ of such openings; if more than 30 square feet deduct 80 per cent of openings.

In measuring gables and ends multiply the greatest height plus one foot by one-half the width plus one foot for extra material at gable.

Ridging, flushing, gutters, corners, cornice, conductor pipes, etc., are charged extra as required.

CORRUGATED IRON FOR ROOFS AND SIDING

Prices all per square of 100 square feet surface area and include anchors, rivets and washers and allowance for standard side and end laps of sheets. Erecting plans furnished with all orders.

PAINTED SHEETS

No.	Gauge of Metal	Wt. Per Square with Rivets, etc.	Price Steel	Price Iron
Cor. 1	No. 26	95 lb.	\$ 5.50	\$ 7.80
Cor. 2	No. 24	129 lb.	6.70	9.80
Cor. 3	No. 22	161 lb.	8.10	11.80
Cor. 4	No. 20	191 lb.	9.80	13.20
Cor. 5	No. 18	257 lb.	12.10	16.30
Cor. 6	No. 16	317 lb.	14.50	19.70

GALVANIZED SHEETS

Cor. 7	No. 26	115 lb.	\$ 8.10	\$11.20
Cor. 8	No. 24	146 lb.	9.50	13.40
Cor. 9	No. 22	178 lb.	11.00	14.60
Cor. 10	No. 20	206 lb.	12.70	18.30
Cor. 11	No. 18	276 lb.	16.40	21.40
Cor. 12	No. 16	336 lb.	16.80	25.00

FOR IRON ROOFS ANY SPECIFIED BRAND WILL BE FURNISHED

- 1—American Ingot Iron.
- 2—Toncan Metal.
- 3—Newport Iron.
- 4—Muck Bar Iron.
- 5—Empire Old Fashioned Iron.
- 6—Youngstown Puddled Iron.

For corrugated iron the usual practice is to make the roof two gauges heavier than the siding; such as No. 22 gauge roof and No. 24 gauge side. These gauges are the ones most commonly used.

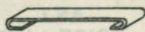
The weights are within 2½ per cent of actual shipping weights, so the freight rates can be figured exactly.

Write for Discount

MISCELLANEOUS ANCHORS, TIES AND RODS



Bent Bar
Fig. 1



Hook Bar
Fig. 7



Hanger for Suspended
Ceilings Fig. 13



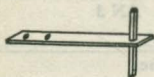
Bent Split Anchor
Fig. 2



Bent Bar
Fig. 8



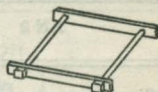
Hanger for Suspended
Ceilings Fig. 14



Pin and Bar Anchor
Fig. 3



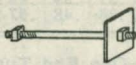
Bent Bar
Fig. 9



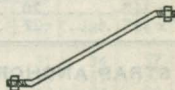
Rod and Bar Clamp
Fig. 15



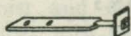
Twisted Pin and Bar
Anchor Fig. 4



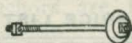
Rod and Washer
Fig. 10



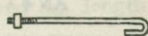
Bent Rod
Fig. 16



Bar and Rod with
Steel Washer Fig. 5



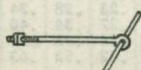
Rod and Cast Iron
Washer Fig. 11



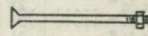
Hook Rod
Fig. 17



Bar and Rod with
Star Washer Fig. 6



Loop Rod and Pin
Fig. 12



Flat Head Rod
Fig. 18

REPUBLIC STANDARD JOIST ANCHORS

STRAP ANCHORS



AN 1
PRICE LIST

Size of Material	Length—Inches									
	12"	15"	18"	24"	30"	36"	42"	48"	54"	60"
1 1/4" x 3/16"08	.10	.12	.16	.20	.24	.28	.32	.36	.40
1 1/4" x 1/4"11	.14	.17	.22	.27	.32	.37	.43	.48	.53
1 1/2" x 1/4"13	.16	.20	.26	.32	.39	.45	.53	.58	.64
2" x 1/4"17	.22	.26	.34	.43	.51	.60	.68	.77	.85
2 1/2" x 1/4"22	.27	.34	.43	.53	.64	.74	.88	.96	1.06

STRAP ANCHORS—One End Turned Up



AN 2



AN 3

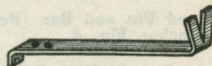
PRICE LIST

Size of Material	Length—Inches									
	12"	15"	18"	24"	30"	36"	42"	48"	54"	60"
1 1/4" x 3/16"12	.14	.16	.20	.24	.28	.32	.36	.40	.44
1 1/4" x 1/4"14	.17	.20	.25	.31	.36	.41	.47	.52	.57
1 1/2" x 1/4"18	.21	.24	.31	.37	.44	.50	.57	.63	.70
2" x 1/4"20	.27	.31	.39	.48	.56	.65	.73	.82	.91
2 1/2" x 1/4"27	.32	.38	.48	.57	.66	.79	.91	1.01	1.12

STRAP ANCHORS—One End Turned Up; One Down



AN 4



AN 5

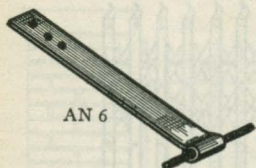
PRICE LIST

Size of Material	Length—Inches									
	12"	15"	18"	24"	30"	36"	42"	48"	54"	60"
1 1/4" x 3/16"14	.16	.18	.22	.27	.31	.35	.39	.41	.47
1 1/4" x 1/4"17	.20	.23	.28	.34	.39	.44	.50	.55	.60
1 1/2" x 1/4"21	.24	.27	.34	.40	.47	.53	.60	.66	.73
2" x 1/4"26	.30	.34	.43	.51	.59	.68	.78	.87	.94
2 1/2" x 1/4"31	.36	.42	.52	.63	.72	.84	.94	1.05	1.16

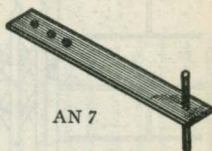
Write for Discount

REPUBLIC STANDARD JOIST ANCHORS

PIN OR T ANCHORS



AN 6

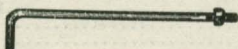


AN 7

PRICE LIST

Size of Material	Length—Inches									
	12"	15"	18"	24"	30"	36"	42"	48"	54"	60"
1 1/4" x 3/16"18	.20	.22	.26	.30	.34	.38	.42	.46	.50
1 1/4" x 1/4"21	.24	.27	.32	.38	.42	.48	.53	.59	.64
1 1/2" x 1/4"25	.28	.31	.38	.43	.51	.57	.64	.70	.77
2" x 1/4"29	.34	.38	.46	.55	.63	.72	.83	.89	.98
2 1/2" x 1/4"34	.39	.45	.55	.66	.75	.86	.98	1.09	1.19

WALL PLATE ANCHOR



AN 8

Size of Material	Length—Inches									
	12"	15"	18"	24"	30"	36"	42"	48"	54"	60"
1/2" Rd.....	.14	.15	.17	.20	.24	.27	.31	.34	.37	.41
5/8" "20	.22	.25	.30	.35	.40	.46	.51	.57	.62
3/4" "28	.32	.36	.43	.51	.59	.67	.74	.82	.90
7/8" "35	.40	.45	.54	.68	.75	.87	.98	1.08	1.18
1" "45	.52	.59	.72	.86	.99	1.12	1.24	1.34	1.53

Joist and other anchors are finished to length and painted with black graphite.

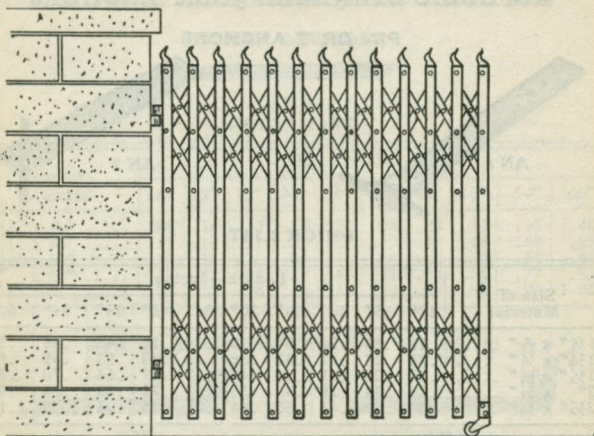
Joist anchors are punched for spikes.

We have at all times a large stock of bars, rods, washers, plates, fittings, etc., and can make up any special sizes or styles desired.

To order standard joist anchors give figure number and size of anchor.

Write for Discount

REPUBLIC STANDARD FOLDING GATES



Style C

Light Gates	\$2.50 per square foot
Standard Gates	3.00 per square foot
Heavy Gates	3.50 per square foot

Prices are for gates 20 square feet or over. Folding gates are made of two channels or flat bars back to back. Gates fold back to $\frac{1}{8}$ of open size and swing back against the wall. Large sizes are provided with fastening bars and track. Send sketch of opening when ordering gates.

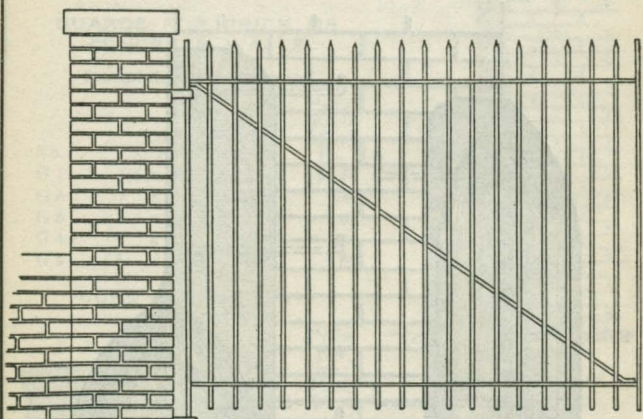
PRICES OF HINGED GATES

No.	Size of Square Bars	Between Bars	Price Per Square Ft.
GT 1	$\frac{1}{2}$ "	3"	\$1.10
GT 2	$\frac{1}{2}$ "	4"	1.00
GT 3	$\frac{1}{2}$ "	5"	.90
GT 4	$\frac{5}{8}$ "	3"	1.60
GT 5	$\frac{5}{8}$ "	4"	1.40
GT 6	$\frac{5}{8}$ "	5"	1.20
GT 7	$\frac{3}{4}$ "	3"	2.20
GT 8	$\frac{3}{4}$ "	4"	1.90
GT 9	$\frac{3}{4}$ "	5"	1.60
GT 10	$\frac{7}{8}$ "	3"	2.80
GT 11	$\frac{7}{8}$ "	4"	2.40
GT 12	$\frac{7}{8}$ "	5"	2.00

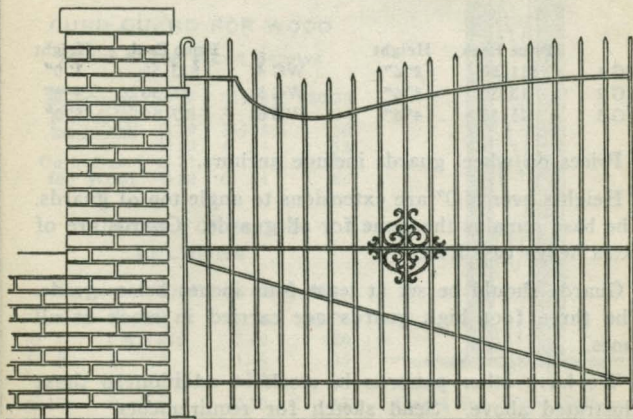
Prices include anchors, fastening bars, hasp for double gates, but no locks. Write for other designs and prices. Prices are for gates costing \$25.00 net or more and measuring 25 square feet or over.

Write for Discount

REPUBLIC STANDARD HINGED GATES

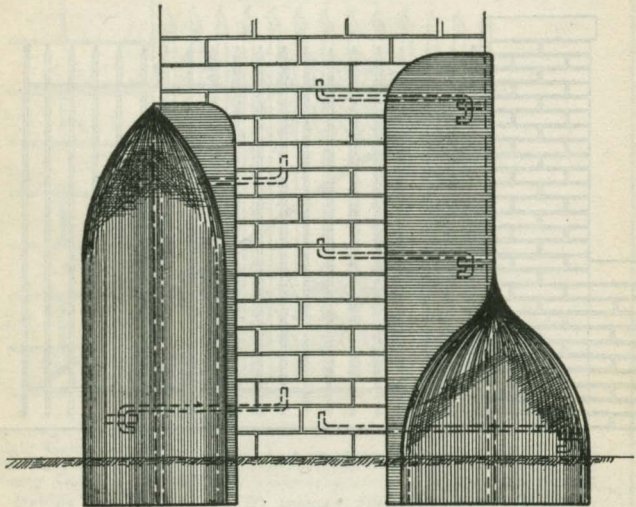


Style A



Style B

REPUBLIC STANDARD WHEEL GUARDS



	Price Each	Height		Price Each	Height
WG 1	\$11.50	2' 6"	WG 4	\$13.50	3' 0"
WG 2	13.50	3' 6"	WG 5	15.50	4' 0"
WG 3	15.50	4' 6"	WG 6	17.50	5' 0"

Prices on wheel guards include anchors.

Heights over 3' 0" are extensions to angle top of guards. The base remains the same for all guards. Guards are of extra heavy cast iron.

Guards should be set at least four inches below grade. The three foot high guards are carried in stock at all times.

We have other patterns in stock in addition to those illustrated above. Send sketch for requirements.

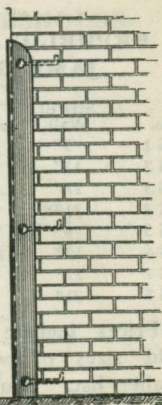
Write for Discount

REPUBLIC STANDARD CORNER GUARDS

GUARDS FOR BRICK OR CONCRETE WALLS

Complete with Anchors

No.	Size Angle	Price Each 4 Ft. High	Price Each Add'l Ft.
G 1	2½ x 2½	\$1.60	\$0.36
G 2	3 x 3	1.90	.44
G 3	3½ x 3½	2.70	.62
G 4	4 x 4	3.00	.74
G 5	5 x 5	4.00	1.00



Guard for Brick or
Concrete Walls

CURB GUARDS WITH ANCHORS



Curb Guard
with Anchor

No.	Size Angle	Price Per Lineal Foot
G 11	2½ x 2½	\$0.36
G 12	3 x 3	.44
G 13	3½ x 3½	.62
G 14	4 x 4	.74
G 15	5 x 3½	.88
G 16	6 x 4	1.08

CURB GUARD FOR WOOD

Punched for Wood Screws



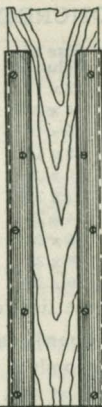
Curb Guard
for Wood

G 17	2½ x 2½	\$0.30
G 18	3 x 3	.36
G 19	3½ x 3½	.50
G 20	4 x 4	.58
G 21	5 x 3½	.74
G 22	6 x 4	.86

GUARDS FOR WOOD COLUMNS

Punched for Wood Screws

G 6	2 x 2	\$1.10	\$0.26
G 7	2½ x 2½	1.20	.30
G 8	3 x 3	1.40	.36
G 9	3½ x 3½	2.00	.50
G 10	4 x 4	2.30	.58



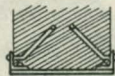
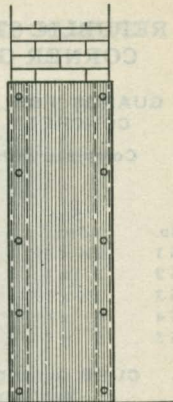
Guard for Wood Column

Write for Discount

REPUBLIC STANDARD
JAMB GUARDS

No.	Size of Wall	Thick. of Metal	Price Per Ft. High
JG 1	9"	$\frac{3}{16}$ "	\$1.40
JG 2	13"	$\frac{3}{16}$ "	1.70
JG 3	17"	$\frac{3}{16}$ "	1.90
JG 4	21"	$\frac{3}{16}$ "	2.20
JG 5	9"	$\frac{1}{4}$ "	1.90
JG 6	13"	$\frac{1}{4}$ "	2.20
JG 7	17"	$\frac{1}{4}$ "	2.50
JG 8	21"	$\frac{1}{4}$ "	2.80

Prices include anchors. For odd sizes of walls take next higher list. Thus 15" wall take 17" list.



COLUMN GUARDS FOR
CONCRETE COLUMN

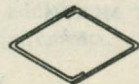
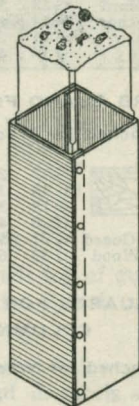
No.	Size of Column	Thick. of Metal	Price Per Ft. High
CO 1	12 x 12	$\frac{3}{16}$ "	\$3.50
CO 2	14 x 14	$\frac{3}{16}$ "	4.00
CO 3	16 x 16	$\frac{3}{16}$ "	4.50
CO 4	18 x 18	$\frac{3}{16}$ "	5.10
CO 5	20 x 20	$\frac{3}{16}$ "	5.60
CO 6	22 x 22	$\frac{3}{16}$ "	6.20
CO 7	24 x 24	$\frac{3}{16}$ "	6.70
CO 8	26 x 26	$\frac{3}{16}$ "	7.20
CO 9	28 x 28	$\frac{3}{16}$ "	7.70
CO 10	30 x 30	$\frac{3}{16}$ "	8.30

Use same list for Round Columns.

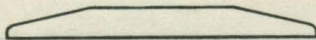
These guards can be shipped either riveted complete or knocked down and bolted at the job. Painted black on outside.

Prices are for guards three foot high and higher.

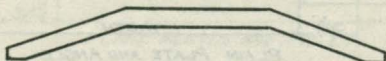
Write for Discount



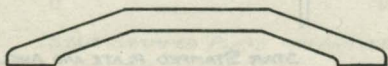
REPUBLIC STANDARD THRESHOLDS



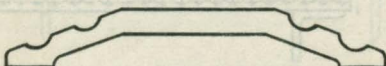
Steel—Style No. TR 1



Pressed Steel—Style No. TR 2



Cast Iron—Style No. TR 3



Cast Iron—Style No. TR 4

PRICES PER LINEAL FOOT

Width	Style No. TR 1		Style No. TR 2	Style No. TR 3	Style No. TR 4
	Height ¼ ⅝ ¾"	Height ½ ⅝"	Height ½ ⅝ ¾"	Height ½ ⅝ ¾"	Height ½ ⅝ ¾"
2½"	\$0.80	\$0.90
3"	.90	1.00	\$0.90
4"	1.00	1.10	1.00	\$1.20	\$1.30
5"	1.10	1.20	1.10	1.40	1.50
6"	1.20	1.30	1.20	1.60	1.70

Prices are per lineal foot drilled for wood screws. Ends are finished square and to exact length. Painted black.

No wood screws furnished.

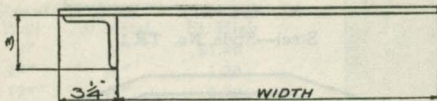
Cutting irregular ends 75c net extra per threshold.

We manufacture any special style of threshold required, such as thresholds for double and triple sliding doors for garages, factories, etc. Send sketches for our estimate.

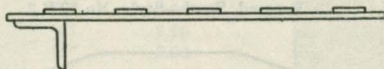
Write for prices on brass or bronze thresholds.

Write for Discount

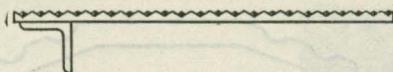
REPUBLIC STANDARD STEEL PLATE SILLS



PLAIN PLATE AND ANGLE



STAR STAMPED PLATE AND ANGLE



DIAMOND CHECKERED PLATE AND ANGLE

PRICE PER LINEAL FOOT

Thickness of Metal		1/4"	5/8"	3/8"
SS 1	For 9" Wall	\$1.80	\$2.10	\$2.40
SS 2	For 13" Wall	2.10	2.50	2.90
SS 3	For 17" Wall	2.50	2.90	3.40
SS 4	For 21" Wall	2.80	3.40	3.90

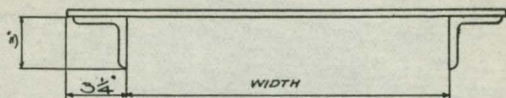
Star pressed plate sills made in 1/4" and 5/8" thickness only.

For intermediate sizes of walls take next larger size.

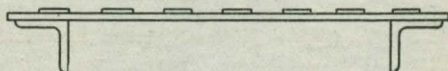
See information on next page.

Write for Discount

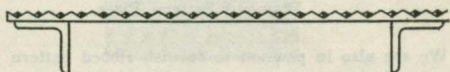
REPUBLIC STANDARD STEEL PLATE SILLS



PLAIN PLATES AND ANGLES



STAR STAMPED PLATE AND ANGLES



DIAMOND CHECKERED PLATE AND ANGLES

PRICE PER LINEAL FOOT

Thickness of Metal	$\frac{1}{4}$ "	$\frac{5}{16}$ "	$\frac{3}{8}$ "
SS 5 For 9" Wall	\$2.50	\$2.90	\$3.20
SS 6 For 13" Wall	2.80	3.30	3.70
SS 7 For 17" Wall	3.20	3.70	4.20
SS 8 For 21" Wall	3.50	4.20	4.70

These sills are used for doors at shipping platforms, freight elevators, fire doors, etc.

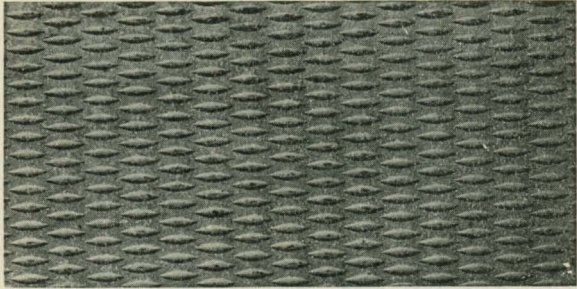
Sills are punched for anchors and for grout holes when required. Anchors are furnished according to kind of walls over which sills fit. Prices include anchors.

Any other style made to specifications.

Painted shop coat black graphite.

Write for Discount

PRESSED STEEL FLOOR PLATES



Diamond Pattern Plate

We are also in position to furnish ribbed pattern plates

SAFE LOAD PER SQUARE FOOT STEEL PLATE
THICKNESS IN INCHES

Span in ft.	1/8	3/16	1/4	5/16	3/8	7/16	1/2	5/8
2	80	182	379	516	748	1021	1345	2100
3	33	77	140	222	318	444	582	918
4	16	40	75	119	176	242	318	596
5	9	22	44	72	107	148	197	315
6	13	28	46	70	97	131	211
7	8	18	30	47	67	91	148
8	11	20	33	47	65	108
9	7	13	22	33	47	80
10	8	16	24	35	60

SAFE LOAD PER SQUARE FOOT
CAST IRON PLATES

2	15	36	79	110	160	221	294	485
3	4	12	25	41	63	88	118	202
4	3	10	17	59	42	58	103
5	2	7	13	20	30	60
6	2	5	8	15	32
7	2	6	17
8	7
9
10

Prices of Above on Application

STAR PRESSED STEEL FLOOR PLATES



STEEL FLOOR PLATES ARE USED FOR:

Floors and Stair Ways,

Engine and Boiler Rooms,

Factories and Power Plants,

Foundry Floors, Sidewalk Doors,

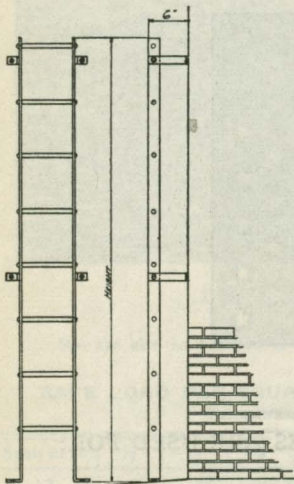
Platforms, Trench Covers, Etc.

Steel plates are 50 per cent lighter than cast iron of equal strength and average at least 30 per cent less in cost.

Star pressed plates can be made in $\frac{1}{8}$, $\frac{3}{8}$, $\frac{1}{4}$ and $\frac{5}{8}$ inch thickness only. But can be made in any length or width.

Send drawing for price, specifying quantity wanted.

REPUBLIC STANDARD STEEL LADDERS



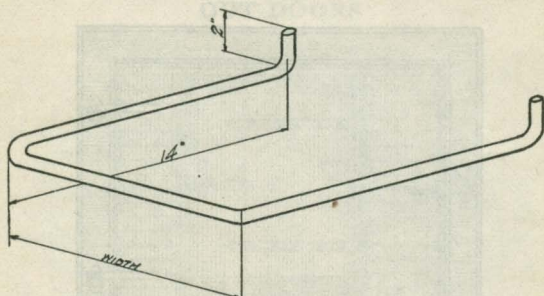
Standard ladders have rungs 12" centers and extend 6" out from wall to center of rungs. Rungs are shouldered and riveted firmly into sides of ladder. Prices include splices for long ladders, connections to walls, etc., but do not include expansion or machine bolts for fastening to walls.

Note: In ordering ladders, give height and style wanted, and we would advise to send a sketch showing location of same, so that the anchors can be properly placed. We guarantee material and workmanship to be first class in every respect. Write for prices on any other style.

Style	Sides	Rungs	Width	Price Per Foot in Height
LA 1	1½" x ¼"	⅝"	14"	\$0.90
LA 2	1½" x ¼"	⅝"	16"	1.00
LA 3	1½" x ¼"	⅝"	18"	1.10
LA 4	2" x ⅜"	¾"	16"	1.20
LA 5	2" x ⅜"	¾"	18"	1.30
LA 6	2" x ⅜"	¾"	20"	1.40
LA 7	2½" x ⅜"	⅞"	16"	1.50
LA 8	2½" x ⅜"	⅞"	18"	1.60
LA 9	2½" x ⅜"	⅞"	20"	1.70

Write for Discount

REPUBLIC STANDARD LADDER RUNGS



PRICE EACH

Size	12" to 18" Wide	18" to 24" Wide
5/8"	\$0.40	\$0.50
3/4"	.60	.70
7/8"	.80	.90
1"	1.00	1.20

Painted Black; Galvanized extra. Build rungs 8" into wall.

REPUBLIC STANDARD STEEL BEARING PLATES—For I Beams and Channels



LIGHT PLATES

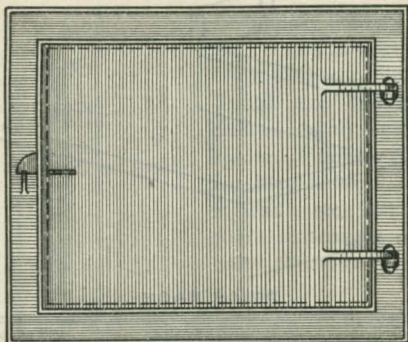
		Size	Price Each
PL 1	For 3", 4", 5", 6" I Beams and Cha.	6" x 6" x 3/8"	\$0.24
PL 2	For 7"-8" I Beams and Cha.	8" x 8" x 1/2"	.54
PL 3	For 9"-10" I Beams and Cha.	8" x 12" x 1/2"	.84
PL 4	For 12" I Beams and Cha.	12" x 12" x 1/2"	1.26
PL 5	For 15" I Beams and Cha.	12" x 16" x 1/2"	1.68
PL 6	For 18", 20", 24" I Beams	16" x 16" x 3/4"	3.18

HEAVY PLATES

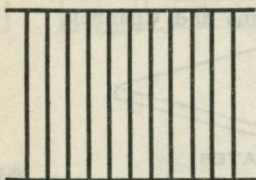
		Size	Price Each
PL 7	For 3", 4", 5", 6" I Beams and Cha.	6" x 6" x 1/2"	\$0.30
PL 8	For 7"-8" I Beams and Cha.	8" x 8" x 3/4"	.84
PL 9	For 9"-10" I Beams and Cha.	8" x 12" x 3/4"	1.26
PL 10	For 12" I Beams and Cha.	12" x 12" x 3/4"	1.86
PL 11	For 15" I Beams and Cha.	12" x 16" x 3/4"	2.46
PL 12	For 18", 20", 24" I Beams	16" x 16" x 1"	4.38

Write for Discount

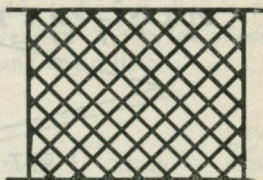
CAST IRON ASH PIT AND CLEAN OUT DOORS



Size Opening	Weight	Price Each
7" x 9"	7½ lbs.	\$1.00
8" x 10"	8 lbs.	1.15
10" x 12"	15 lbs.	1.50
12" x 15"	19 lbs.	2.50
14" x 16"	24 lbs.	3.60



Foundation Grates

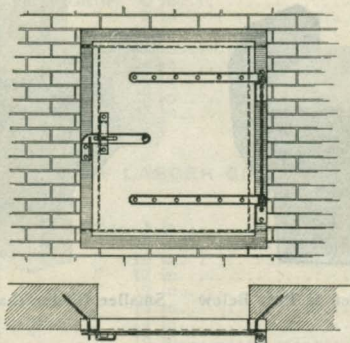


Ventilator Grates

	Price Each	Price Each
6" x 8"	\$0.20	\$0.30
6" x 12"28	.44
7" x 14"48
8" x 8"20	..
8" x 10"28	.44
8" x 12"35	.50
8" x 16"60
10" x 12"38	.52
10" x 20"	1.06
12" x 14"85
8" x 8" X Heavy....	.30	..
8" x 10" X Heavy....	.48	..

Write for Discount

REPUBLIC STANDARD ASH PIT AND CLEAN
OUT DOORS



STEEL PLATE DOORS

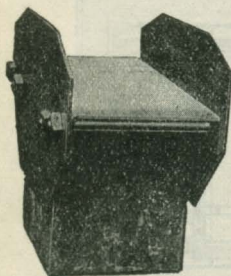
No.	Clear Size of Door Opening	Price Each	Average Weight
AD 1	12" x 18"	\$6.50	30 lbs.
AD 2	12" x 21"	7.50	35 lbs.
AD 3	12" x 24"	8.50	40 lbs.
AD 4	15" x 18"	8.00	35 lbs.
AD 5	15" x 24"	10.00	45 lbs.
AD 6	15" x 30"	14.00	65 lbs.
AD 7	18" x 18"	10.00	45 lbs.
AD 8	18" x 24"	12.50	55 lbs.
AD 9	18" x 30"	15.50	70 lbs.
AD 10	21" x 21"	12.00	55 lbs.
AD 11	21" x 24"	13.50	60 lbs.
AD 12	21" x 30"	16.50	75 lbs.
AD 13	24" x 24"	15.00	65 lbs.
AD 14	24" x 30"	18.00	85 lbs.
AD 15	24" x 36"	20.00	100 lbs.
AD 16	30" x 30"	25.00	135 lbs.
AD 17	30" x 36"	29.00	160 lbs.
AD 18	36" x 36"	34.00	190 lbs.
AD 19	36" x 42"	38.00	200 lbs.
AD 20	36" x 48"	44.00	230 lbs.

Doors are made of steel plate with heavy strap hinges and latch. Frames are of angles. Prices include anchors for fastening into brick or concrete walls. Frames and doors strongly riveted together. Painted black. Large size doors are reinforced with angles.

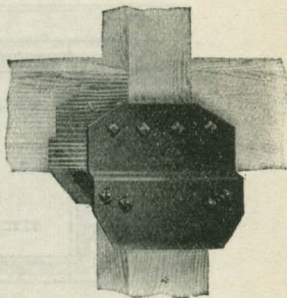
Write for Discounts

DUPLEX STEEL POST CAPS

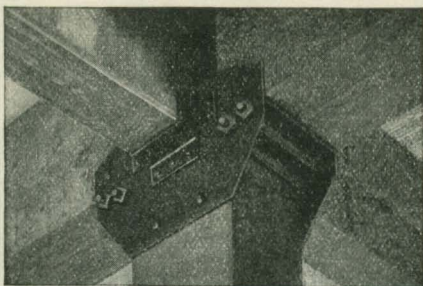
Patented



Same Size Girder as Post Below



Smaller Girder than Post Below



Four-way Construction

Made of open-hearth steel plate, is the strongest cap on the market. The side plates in connection with the bearing bracket bolts form a complete cap around the post. Cap arrives all ready to place on top of the post. No framing necessary. The tests have fully proven the great strength of this design and that it is not possible to break the cap when even more than six times the ultimate safe load of the timber has been applied. Cheaper than cast iron caps, stronger, more convenient and neater in appearance.

PRICE LIST DUPLEX STEEL POST CAPS

				Price Each	
6 x 6	Post, to carry	Girder	6 in.		\$ 3.00
8 x 8	" " "	"	8 in.		4.00
10 x 10	" " "	"	10 in.		5.00
12 x 12	" " "	"	12 in.		6.00
14 x 14	" " "	"	14 in.		8.00
16 x 16	" " "	"	16 in.		10.00
18 x 18	" " "	"	18 in.		16.00
20 x 20	" " "	"	20 in.		20.00

OFFSET TO CARRY LARGER GIRDER THAN POST

				Price Each	
6 x 6	Post, to carry	Girder	8 in.		\$ 3.50
6 x 6	" " "	"	10 in.		4.00
8 x 8	" " "	"	10 in.		4.50
8 x 8	" " "	"	12 in.		5.00
10 x 10	" " "	"	12 in.		5.50
10 x 10	" " "	"	14 in.		6.00
12 x 12	" " "	"	14 in.		7.00
12 x 12	" " "	"	16 in.		8.00
14 x 14	" " "	"	16 in.		9.00
14 x 14	" " "	"	18 in.		10.00
16 x 16	" " "	"	18 in.		12.00
16 x 16	" " "	"	20 in.		14.00
18 x 18	" " "	"	20 in.		18.00

BENT IN TO CARRY SMALLER GIRDER THAN POST

				Price Each	
8 x 8	Post, to carry	Girder	6 in.		\$ 4.50
10 x 10	" " "	"	6 in.		5.00
10 x 10	" " "	"	8 in.		5.50
12 x 12	" " "	"	8 in.		7.00
12 x 12	" " "	"	10 in.		7.00
14 x 14	" " "	"	10 in.		9.00
14 x 14	" " "	"	12 in.		9.00
16 x 16	" " "	"	12 in.		12.00
16 x 16	" " "	"	14 in.		12.00
18 x 18	" " "	"	16 in.		18.00

All prices above listed for one or two-way caps.

For post caps of odd size posts, such as 8 x 10, 10 x 12, etc., figure regular sizes of the larger dimensions.

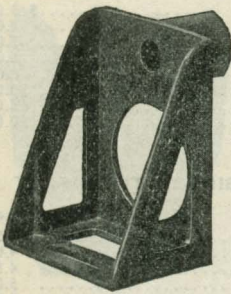
For three-way post caps, add 25 per cent additional to list price.

For four-way post caps, add 50 per cent additional to list price.

All sizes in stock.

Write for Discount

DUPLEX JOIST HANGERS

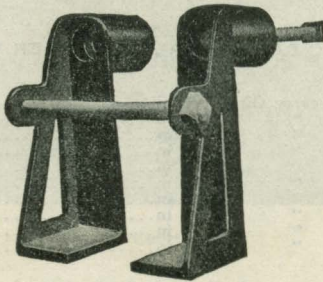


Patented

Each Hanger Tested

No.	To Carry Joist	Price Each
10	2 x 6 to 2 x 10	\$0.20
14	2 x 12 to 2 x 16	.30
15	3 x 6 to 3 x 10	.30
18	2½ x 6 to 2½ x 16	.40
20	4 x 6 to 4 x 10	.35
21	3 x 12 to 3 x 14	.45
21X	3 x 16 to 3 x 20	.50
28	4 x 12 to 4 x 14	.60
28X	4 x 16 to 4 x 20	.70
53	5 x 10 to 5 x 14	.75
53X	5 x 16 to 5 x 18	.90
16	6 x 6 to 6 x 9	.50
60	6 x 10 to 6 x 12	.80
60X	6 x 14 to 6 x 16	1.00
80	8 x 8 to 8 x 12	1.00

All sizes in stock

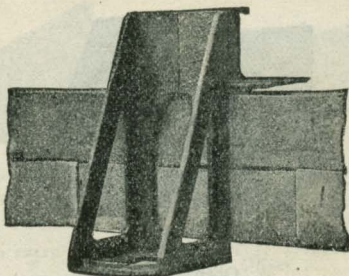


No.	R. & L.	to carry Joists	Price Per Pair Without Bolts
No. 35	R. & L.	8 x 10 to 8 x 14	\$1.25
		10 x 10 to 10 x 14	
No. 75	R. & L.	10 x 16 to 14 x 20	2.00
No. 77	R. & L.	10 x 22 to 16 x 24	3.00

A pair consists of one each R. & L.

Write for Discount

DUPLEX WALL HANGERS

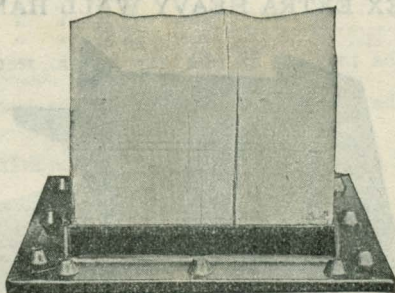


Patented

			Price Each
No. 100	to carry Joist	2 x 6 to 2 x 12.....	\$.25
No. 140	“ “ “	2 x 14 to 2 x 18.....	.40
No. 150	“ “ “	3 x 6 to 3 x 10.....	.35
No. 210	“ “ “	3 x 12 to 3 x 18.....	.55
No. 200	“ “ “	4 x 6 to 4 x 10.....	.55
No. 280	“ “ “	4 x 12 to 4 x 18.....	.75

All sizes in stock

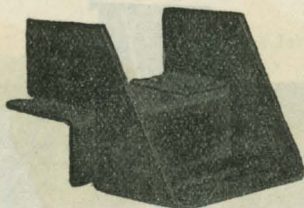
DUPLEX STEEL POST BASES



			Price Each
6 x 6 Post,	size plate	12 x 12.....	\$ 1.50
8 x 8	“ “ “	14 x 14.....	2.00
10 x 10	“ “ “	16 x 16.....	2.50
12 x 12	“ “ “	18 x 18.....	3.00
14 x 14	“ “ “	20 x 20.....	5.00
16 x 16	“ “ “	24 x 24.....	10.00
18 x 18	“ “ “	27 x 27.....	12.00
20 x 20	“ “ “	30 x 30.....	16.00

All Sizes in Stock
Write for Discount

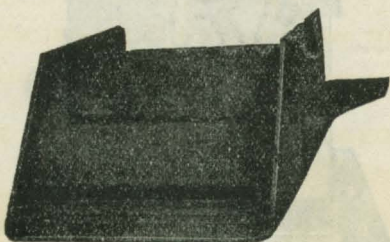
DUPLEX WALL HANGERS



Patented
Made of
Open Hearth
Steel

			Price Each
No. 500	to carry Timbers	5 x 8 to 5 x 16.....	\$1.00
No. 600	" " "	6 x 8 to 6 x 14.....	1.25
No. 800	" " "	8 x 8 to 8 x 12.....	1.50
No. 1000	" " "	10 x 10 to 10 x 12.....	1.60

DUPLEX EXTRA HEAVY WALL HANGER

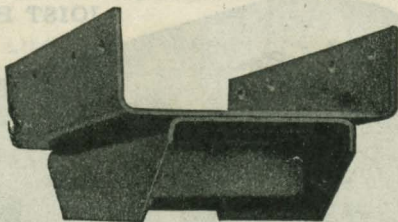


			Price Each
No. 600	Extra Heavy, for	6 x 16 to 6 x 20.....	\$2.00
No. 800	" " "	8 x 14 to 8 x 20.....	2.50
No. 1000	" " "	10 x 14 to 10 x 20.....	3.00
No. 1200	" " "	12 x 14 to 12 x 20.....	4.00
No. 1400	" " "	14 x 14 to 14 x 20.....	5.00
No. 1600	" " "	16 x 16 to 16 x 20.....	6.00
No. 1800	" " "	18 x 18 to 18 x 20.....	8.00

All sizes in stock

Write for Discount

IDEAL STEEL POST CAP, No. 1



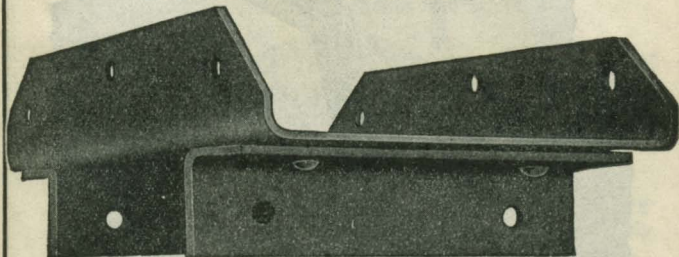
Price Each

6 x 6 Post, to carry	6 in. Girder	\$ 3.00
6 x 6 " " "	8 in. " 1 in. Offset	3.50
6 x 6 " " "	10 in. " 2 in. " "	4.00
8 x 8 " " "	8 in. " " " "	4.00
8 x 8 " " "	10 in. " 1 in. Offset	4.50
8 x 8 " " "	12 in. " 2 in. " "	5.00
10 x 10 " " "	10 in. " " " "	5.00
10 x 10 " " "	12 in. " 1 in. Offset	5.50
10 x 10 " " "	14 in. " 2 in. " "	6.00
12 x 12 " " "	12 in. " " " "	6.00
12 x 12 " " "	14 in. " 1 in. Offset	7.00
12 x 12 " " "	16 in. " 2 in. " "	8.00
14 x 14 " " "	14 in. " " " "	8.00
14 x 14 " " "	16 in. " 1 in. Offset	9.00
14 x 14 " " "	18 in. " 2 in. " "	10.00
16 x 16 " " "	16 in. " " " "	10.00
18 x 18 " " "	18 in. " " " "	16.00
20 x 20 " " "	20 in. " " " "	20.00

Above post caps, 3-way, add 25 per cent additional to list price.

Above post caps, 4-way, add 50 per cent additional to list price.

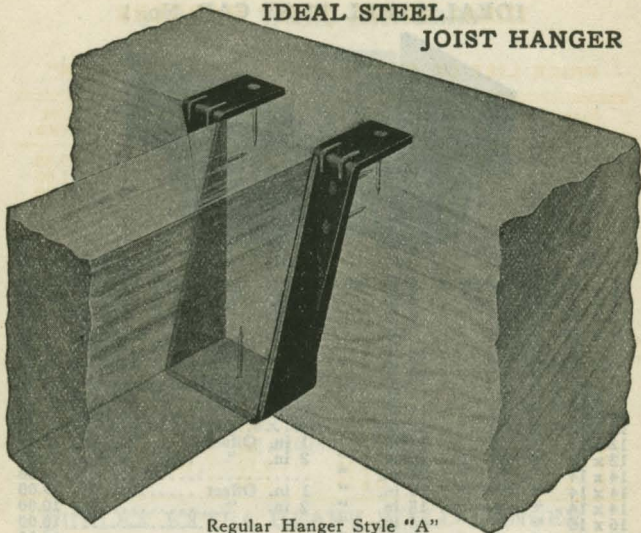
IDEAL STEEL POST CAP, No. 3



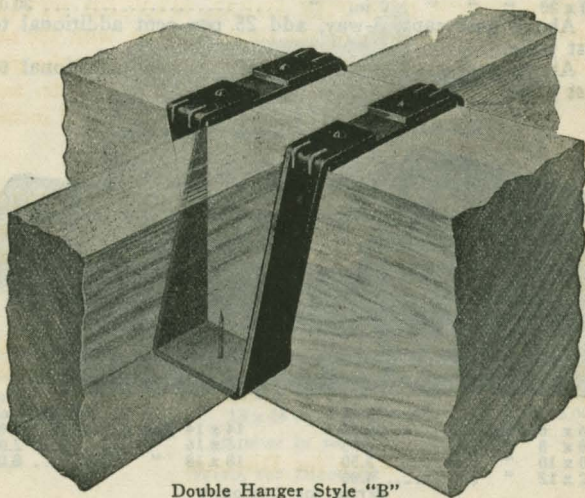
6 x 6 Post	Price Each	\$2.00	14 x 14 Post	Price Each	\$5.00
8 x 8 " "	2.75		16 x 16 " "	7.00	
10 x 10 " "	3.50		18 x 18 " "	8.00	
12 x 12 " "	4.00					

Write for Discount

IDEAL STEEL
JOIST HANGER



Regular Hanger Style "A"



Double Hanger Style "B"

IDEAL STEEL JOIST HANGERS

PRICE LIST OF THE IDEAL HANGER, STYLE "A"

Size of Joist	List Price	Size of Joist	List Price	Size of Joist	List Price
2 x 6	\$0.16	4 x 8	\$0.36	8 x 10	\$0.80
2 x 8	.18	4 x 9	.38	8 x 12	1.00
2 x 10	.22	4 x 10	.40	8 x 14	1.20
2 x 12	.28	4 x 12	.46	8 x 16	1.50
2 x 14	.34	4 x 14	.54	8 x 18	2.00
2 x 16	.40	4 x 16	.75	8 x 20	2.50
2 x 18	.45	4 x 18	1.00	10 x 12	1.30
2½ x 8	.24	5 x 8	.50	10 x 14	1.50
2½ x 9	.26	5 x 9	.56	10 x 16	2.00
2½ x 10	.30	5 x 10	.64	10 x 18	2.40
2½ x 12	.32	5 x 12	.68	10 x 20	2.80
2½ x 14	.36	5 x 14	.72	12 x 12	1.50
2½ x 16	.50	5 x 16	1.00	12 x 14	2.00
2½ x 18	.60	5 x 18	1.10	12 x 16	2.40
3 x 8	.28	6 x 8	.54	12 x 18	2.60
3 x 9	.30	6 x 9	.58	12 x 20	3.00
3 x 10	.32	6 x 10	.68	14 x 14	2.20
3 x 12	.40	6 x 12	.74	14 x 16	2.60
3 x 14	.42	6 x 14	.90	14 x 18	3.00
3 x 16	.60	6 x 16	1.10	14 x 20	3.40
3 x 18	.70	6 x 18	1.30		

THE PRICE FOR THE IDEAL HANGER STYLE "B" is double the price of the single hangers, with 10c net added for the steel riveted strap connections over the girder providing the girder is less than 8 inches wide, and 15c net for connections over girders 8 inches to 12 inches wide. 20c net for girders 12 inches and wider.

THE PRICE FOR THE IDEAL HANGER STYLE "C" over I-beam is the same as Style "A" with 10c net added for all hangers up to 4 x 16 joists. For larger size hangers add 15c net.

When sending inquiries and orders for Style "B" hangers, give dimension over which hanger must go—namely, width of girder, or in case of I-beam, width of flange.

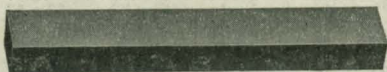
Write for Discount

CONCRETE BARS
IN STOCK
IMMEDIATE SHIPMENT

COLD TWISTED



PLAIN SQUARE



PLAIN ROUND



HAVEMEYER SQUARES



HAVEMEYER ROUNDS



CONCRETE REINFORCING BARS

Material in Stock:

We carry in stock, for immediate shipment, a large tonnage of all size bars, as shown on pages 70 and 71 of this catalogue, in lengths up to 40' 0".

Grades of Steel:

All our concrete bars are rolled from open hearth steel, according to Manufacturers' Standard Specifications, for concrete bars. Copies of mill tests will be furnished upon request.

Twisting:

Our bar department is equipped with modern cold twisting machine, operated by 50 h.p. motor.

Cutting:

Bars are carried in stock lengths of 40' but we cut to any length desired.

Bending:

We can furnish, promptly, special bent material, as shown on following page, including fabricated column spiral reinforcement and any special work required.

Estimates and Quotations:

Prices will be quoted, either lump sum or per pound. We gladly make up quotations from preliminary plans, which do not show complete details of concrete reinforcing.

Designs and Drawings:

Our engineering department is prepared to handle contracts for reinforcement, on same basis as structural steel work, furnishing complete detail drawings and schedules from designs furnished by either architects or our own concrete engineers.

Stock List:

Send us your name for our monthly stock list of concrete bars.

CONCRETE BARS IN STOCK

IMMEDIATE SHIPMENT

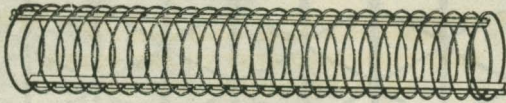
All bars carried in stock lengths of 40'-0", but we cut to any length without extra charge, except under 5'-0"

BARS FURNISHED BENT TO ANY DETAIL

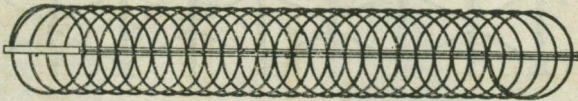
WE MAKE COLUMN SPIRALS

Type of Bar	Size	Net Area of Cross Section	Weight per Lineal Foot
Square Twisted	1/4 In.	0.06 Sq. In.	0.21 Pds.
	3/8 "	0.14 "	0.48 "
	1/2 "	0.25 "	0.85 "
	5/8 "	0.39 "	1.33 "
	3/4 "	0.56 "	1.91 "
	7/8 "	0.76 "	2.60 "
	1 "	1.00 "	3.40 "
	1 1/8 "	1.26 "	4.30 "
	1 1/4 "	1.55 "	5.31 "
Plain Square	1/4 "	0.06 "	0.21 "
	3/8 "	0.14 "	0.48 "
	1/2 "	0.25 "	0.85 "
	5/8 "	0.39 "	1.33 "
	3/4 "	0.56 "	1.91 "
	7/8 "	0.76 "	2.60 "
	1 "	1.00 "	3.40 "
	1 1/8 "	1.26 "	4.30 "
	1 1/4 "	1.55 "	5.31 "
Plain Round	1/4 "	0.05 "	0.17 "
	3/8 "	0.11 "	0.38 "
	1/2 "	0.19 "	0.67 "
	5/8 "	0.30 "	1.04 "
	3/4 "	0.44 "	1.50 "
	7/8 "	0.60 "	2.04 "
	1 "	0.78 "	2.67 "
	1 1/8 "	0.99 "	3.38 "
	1 1/4 "	1.22 "	4.17 "
Havemeyer Square	1/4 "	0.06 "	0.22 "
	3/8 "	0.14 "	0.48 "
	1/2 "	0.25 "	0.85 "
	5/8 "	0.39 "	1.33 "
	3/4 "	0.56 "	1.92 "
	7/8 "	0.76 "	2.61 "
	1 "	1.00 "	3.40 "
	1 1/8 "	1.26 "	4.31 "
	1 1/4 "	1.55 "	5.32 "
Havemeyer Round	1/4 "	0.05 "	0.17 "
	3/8 "	0.11 "	0.38 "
	1/2 "	0.19 "	0.67 "
	5/8 "	0.30 "	1.05 "
	3/4 "	0.44 "	1.51 "
	7/8 "	0.60 "	2.05 "
	1 "	0.78 "	2.67 "
	1 1/8 "	0.99 "	3.38 "
	1 1/4 "	1.22 "	4.18 "

CONCRETE REINFORCEMENT

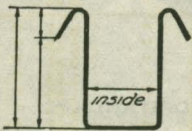


Spiral Ready to Set in Place



Spiral Collapsed for Shipment

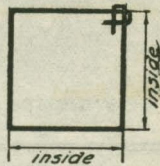
SPECIAL BENDING



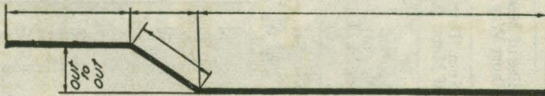
Beam Stirrups



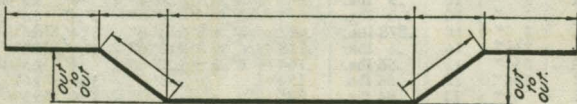
Radius Bending



Column Hoops

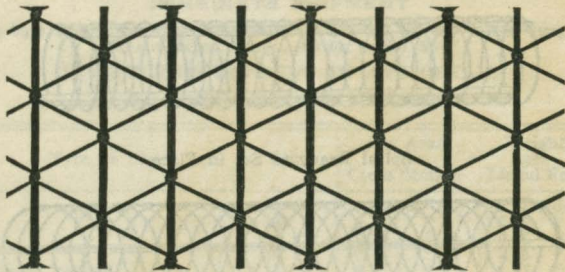


2-Bend Truss Bar



4-Bend Truss Bar

WIRE FABRIC REINFORCEMENT

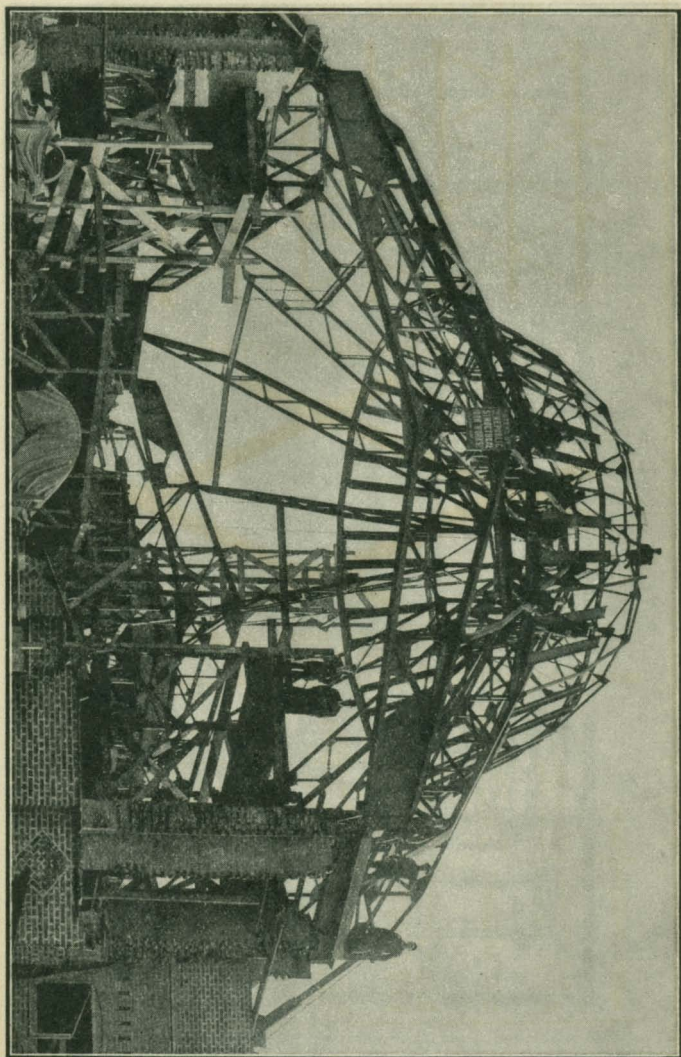


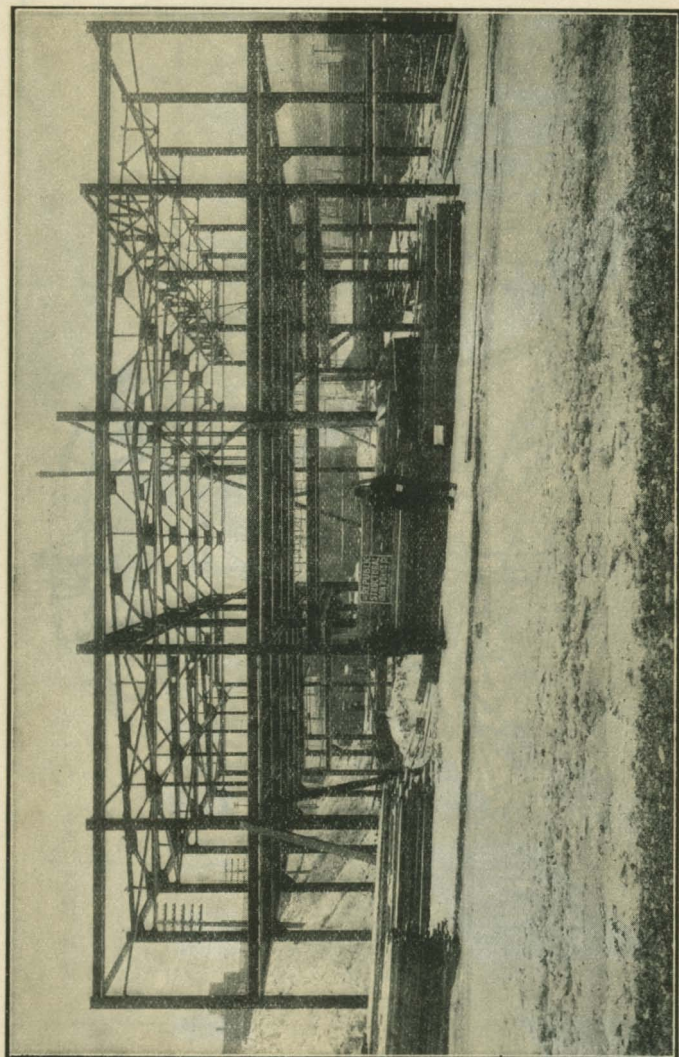
EXPANDED METAL

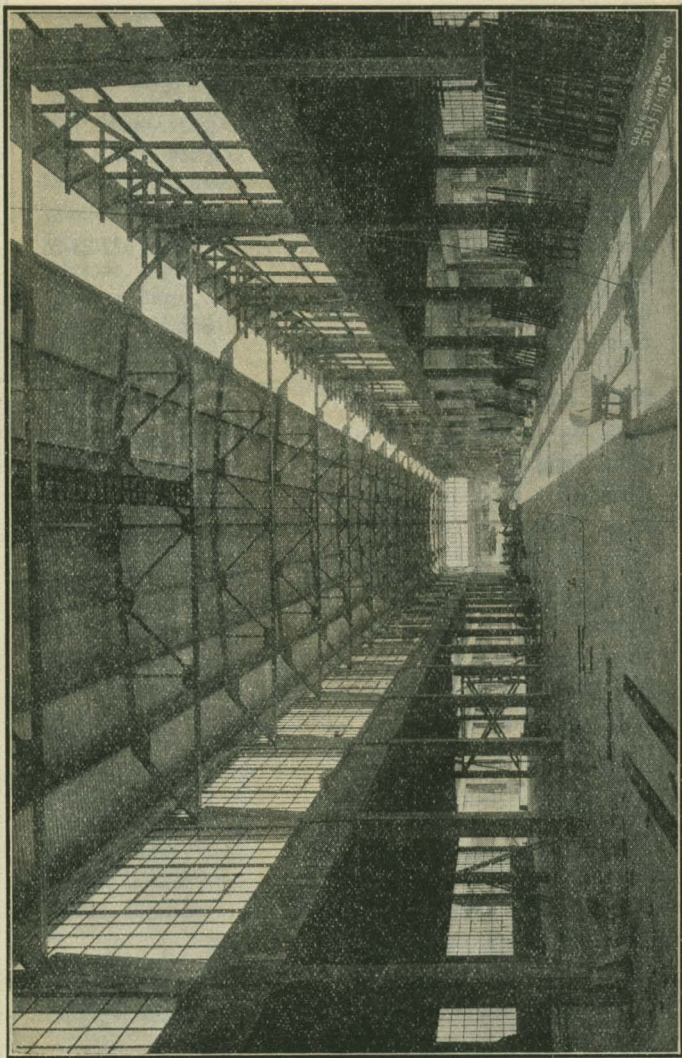


WEIGHTS, SECTIONAL AREA AND STANDARD SIZE SHEETS

Style	Size of Mesh, Short Way	Nom. Thickness of Metal (Gauge)	Approx. Weight per Sq. Ft.	Net. Sec. Area per Ft. of Width (in Sq. In.)	Standard Size Sheets	
					Long Way of Diamond	Short Way of Diamond
F	3 "	12	.51 lbs.	.150	6', 8', 9' & 10'-8"	3', 4', 5' & 6'
G	3 "	10	.6 lbs.	.176	6', 8', 9' & 10'-8"	3', 4', 5' & 6'
H	3 "	10	.9 lbs.	.265	6', 8', 9' & 10'-8"	4' & 5'-4"
I	3 "	10	1.2 lbs.	.353	6', 8', 9' & 10'-8"	3', 4' & 6'
J	3 "	16	.278 lbs.	.082	6' & 8' & 10'-8"	3', 4', 5' & 6'
K	2 1/4 "	16	.4 lbs.	.118	6' & 8' & 10'-6"	3', 4', 5' & 6'
L	2 1/4 "	12	.56 lbs.	.164	6' & 8' & 10'-6"	4' & 5'-4"
M	1 1/2 "	12	.66 lbs.	.194	6'	3', 4', 5' & 6'
R	1 1/2 "	13	.84 lbs.	.246	6'	3', 4', 5' & 6'







INDEX

	PAGES
Anchors, Joist	43-44-45
Anchors, Miscellaneous	43
Angle Lintels	4
Area Gratings	37
Area Railings	22-23-26
Ash Pit Doors, C. I.....	58
Ash Pit Doors, Steel.....	59
Awnings	14-15
Bars, Concrete	68-69
Bars, Havemeyer	68-69
Bars, Twisted	68-69
Bases, Cast Iron	10-11
Bases, Post	63
Beam Sections	8
Beam Safe Loads	12
Bearing Plates	57
Brackets	29
Built Sections, Standard.....	8
Buildings, Steel Frame	40
Buildings, Corr. Iron Covered.....	40
Caps, Post	60-61-65
Canopies	14-15
Channel Sections	9
Channel Safe Loads	13
Clean-out Doors, C. I.	58
Clean-out Doors, Steel	59
Coal Doors	32-33

INDEX-CONTINUED

	PAGES
Coal Rings	30-31
Coal Rings, Plain	30
Coal Rings, Illuminated	31
Column Sections, Standard	9
Columns, Cast Iron	9-10
Columns, Pipe	11
Concrete Bars	68-69
Concrete Column Guards	50
Corrugated Iron	42
Corrugated Iron Estimating	41
Doors, Clean-out	58-59
Doors, Sidewalk	32-33-34-35-36
Door Sills	52-53
Expanded Metal	72
Expansion Gates	46
Floor Plates	54-55
Folding Gates	46
Foundation Grates	58
Gates	46-47
Grating, Area	37
Guards, Wall	49
Guards, Corner	49
Guards, Jamb	50
Guards, Wheel	48
Guards, Window	38
Hangers, Joist, Ideal	66-67
Hangers, Miscellaneous	43
Hangers, Wall, Duplex	63-64

INDEX—CONTINUED

	PAGES
I Beams, Safe Loads.....	12
Illuminated Sidewalk Doors	32-36
Illuminated Coal Rings	31
Jamb Guards	50
Joist Anchors	43-44-45
Joist Straps	44
Ladders	56
Ladder Rungs	57
Lintels	4-5-6
Metal, Expanded	72
Mill Building	40
Ornamental Grills	39
Ornamental Stairs	24-25
Ornamental Brackets	29
Ornamental Railings	22-23
Pipe Columns	11
Pipe Railings	26
Plates, Steel Floor	54-55
Plates, Bearing	57
Post Bases	63
Post Caps, Duplex and Ideal.....	60-61-65
Pressed Plates	55
Rails	22-23
Railings, Pipe	26-27
Railings, Ornamental	22-23
Reinforcing for Concrete.....	68-69-70-71
Roofs, Corrugated Iron.....	40-41-42
Roof Trusses	18-19-20

INDEX—CONTINUED

	PAGES
Safe Loads, I Beams	12
Safe Loads, Channels	13
Sidewalk Doors	32-33-34-35
Sidewalk Gratings	37
Sills, Steel Plate	52-53
Spiral Stairs	28
Stairs	24-25-27
Stacks	16
Stirrup Irons	66-67
Stock Material	3
Tie Straps	43-44
Tee Anchors	45
Thresholds	51
Trusses, Prices	18-19
Trusses, Details	20-21
Trusses, Fittings	17
Vault Doors	32-33
Vent. Grates	58
Wall Hangers	63-64
Weights, Beams	12
Weights, Channels	13
Wheel Guards	48
Window Guards	38
Wickets	39

