

A-Plus Galvanizing, Inc.
Booth 430

1100 N. Ohio St.
P.O. Box 2717
Salina, KS 67402
Ph: 785.820.9823
Fax: 785.820.9816
www.aplusgalv.com

Oversized kettle dimensions of 82" long x 10" wide x 12" deep, A-Plus Galvanizing, Inc. is home of the super kettle, the world's largest hot-dip galvanizing kettle. Oversized structures have been hot-dip galvanized in a single dip, such as an 88,000# tower anchor for a cable-stayed bridge, an 82" x 10" smoke-stack assembly, and 81" railroad-bridge beams. Eighty acres of on-site storage, and painting after galvanizing is available.

AceCad Software, Inc.
Booth 307

825 Springdale Dr.
Whiteland Business Center
Exton, PA 19341
Ph: 610.280.9840
Fax: 610.280.9841
www.strucad.com

StruCad, a 3-D structural-steel detailing software, can automatically generate fully detailed fabrication and erection drawings, full-sized templates, CNC manufacturing data, and a customizable material list. Increase productivity of your operation by 40%. Eliminate fabrication shop and erection site errors. StruCad is easy to learn and customizable.

Action Steel Detailing, Inc.
Booth 617

916 E Baseline Rd., Ste. 205
Mesa, AZ 85204
Ph: 480.813.8966
Fax: 480.813.6680
grbinch@actionsd.com
www.actionsd.com

American Institute of Steel Construction, Inc.

Booths 217, 211 (Awards)
One E. Wacker Dr., Ste. 3100
Chicago, IL 60601
Ph: 312.670.2400
Toll-Free: 866.ASK.AISC
Fax: 312.670.5403
www.aisc.org



Learn about AISC's products and solutions, including information about AISC's new ePubs program. Chat with AISC staff and meet AISC's Steel Solution Center team.

Steel
SolutionsCenter
Your connection to
ideas + answers

AISC – CIS/2 Interactive EDI Exhibit
Booth 223

One E. Wacker Dr., Ste. 3100
Chicago, IL 60601
Ph: 312.670.2400
Fax: 312.670.5403
www.aisc.org/cis2



CIS/2 Work-flow-Real World Experiences. A public theater

where steel designers, software developers, and AISC representatives demonstrate how to boost productivity with CIS/2 data interchange (EDI). With the CIS/2 Team-Building Lab, improve communications across the steel team. Steel designers, detailers, and fabricators can work with software representatives to learn how to apply CIS/2 productivity to their business. Sign up your steel team today!

Allied Machine and Engineering Corp.
Booth 546

P.O. Box 36
Dover, OH 44622
Ph: 330.343.4283
Toll-Free: 800.321.5537
Fax: 330.602.3400
www.alliedmachine.com

Allied Machine & Engineering Corp. (AMEC) manufactures replaceable tip drills, featuring the T-A(r) Drilling System, available as standard product. Range: 3/8" to 4-1/2" (9.5mm-114mm) HSS, C-2, C-3, & C-5 substrates. Multiple coatings and specials available. Structural steel (drill diameter range, 9/16" to 1-7/8") tools are now available as Standard tooling.

American Galvanizers Association
Booth 265

6881 S. Holly Circle, Ste. 108
Centennial, CO 80112
Ph: 720.554.0900
Toll-Free: 800.468.7732
Fax: 720.554.0909
www.galvanizeit.org

Serving the needs of specifiers, engineers, contractors, and fabricators throughout North America since 1935, the American Galvanizers Association (AGA) provides information on innovative applications and technological developments in hot-dip galvanizing for corrosion protection. Created to educate and train in the specification and use of hot-dip galvanized steel, the AGA maintains a large technical library, distributes numerous industry publications, offers free accredited educational seminars, and provides free technical support.

American Punch Company
Booth 548

27101 Tungsten Rd.
Cleveland, OH 44132
Ph: 216.731.4501
Toll-Free: 800.243.1492
Fax: 216.731.3790
rwolson@americanpunchco.com
www.americanpunchco.com

American Punch manufactures punches, dies and shear blades for: IRONWORKER, BEAM, PLATE and

ANGLE lines. American Punch carries stock for same-day shipment. Stop by the booth to pick up the catalog.

American Society of Civil Engineers (ASCE)
Booth 142

1801 Alexander Bell Dr.
Reston, VA 20191
Ph: 703.295.6054
Toll-Free: 800.548.2723
Fax: 703.295.6361
suerichardson@asce.org
www.asce.org

Ameron International Performance Coatings & Finishes Group

Booth 130
13010 Morris Rd., Ste. 400
Alpharetta, GA 30004
Ph: 678.393.0653
Toll-Free: 800.926.3766
Fax: 678.566.2699
www.ameroncoatings.com

Ameron Performance Coatings and Finishes Group features Steelguard Series, a complete line of thin-film intumescent passive fire-protection products. PSX topcoats set is a versatile, high-performance, polysiloxane technology. Amerlock surface tolerant epoxies have full-range color capability. Amershield topcoats feature high-build polyurethane performance. Dimetcote Series shop primers protect steel for the largest construction projects.

Applied Bolting Technology
Booth 432

1413 Rockingham Rd.
Bellows Falls, VT 05101
Ph: 802.460.3100
Toll-Free: 800.552.1999
Fax: 802.460.3104
ccurven@sover.net
www.appliedbolting.com

Arcelor International America
Booth 124

350 Hudson St.
New York, NY 10014
Ph: 212.520.7500
Fax: 212.520.7702
www.arcelor.com

Arcelor (FKA Tradeared) supplies structural shapes to America, featuring a wide range of W-shapes A913/50, A913/65, A572/50, A992, from W4x13 to W44x335, including jumbos up to W14x730, W36x650 and W40x593. Large range of L, MC, MC and standard shapes (thru S24). Large range of sheet-piles (AZ, AU) and special sections. Entire range of metric (European) shapes.

Aztec Galvanizing Services
Booth 159

1300 S University Dr., Ste. 200
Fort Worth, TX 76107
Ph: 817.810.0095
Fax: 817.336.5354
cdwilliams@aztecg galvanizing.com
www.aztecg galvanizing.com

nascc exhibitors 2004

Long Beach, CA — March 24-27

B.D. Structural Design, Inc.

Booth 513

85, J-Armand Bombardier, Ste. 200
Boucherville, QC Canada J4B 8P1
Ph: 450.641.1434
Fax: 450.449.1772
dsbd-blierce@bdsd.com
www.bdsd.com

B.D. Structural Design is a structural steel detailing business with nearly 30 years of experience. It's certified 9001-2000, and with 40 SDS/2 licenses, B.D. Structural Design can manage single projects up to 10,000 tons and more with an annual capacity of more than 20,000 tons. Services cover shop drawings, erection plans, anchor bolts layout, connection sketches, design calculations and more.

BDS Steel Detailers, Inc.

Booth 526

225 E. First St., Ste. 108
Mesa, AZ 85201
Ph: 480.615.1700
Toll-Free: 888.838.1540
Fax: 480.615.1717
don.engler@bdssteel.com
www.bdsglobal.com

BendTec, Inc.

Booth 423

366 Garfield Ave.
Duluth, MN 55802
Ph: 218.722.0205
Fax: 218.722.6598
wendy@bendtec.com
www.bendtec.com



BendTec is a leader in bending and fabrication for projects involving curved architectural and structural members. AISC-Certified for conventional steel building structures, simple steel bridges, complex steel building structures and major steel bridges. Products include roof trusses, parabolic arches, vierendell trusses, long radius bends, light/power poles, signs, bridge arches, park benches and window mullions.

BUG-O Systems Inc.

Booth 366

3001 W. Carson St.
Pittsburgh, PA 15204
Ph: 412.331.1776
Toll-Free: 800.245.3186
Fax: 412.331.0383
www.bugo.com

BUG-O Systems, Inc., a division of Weld Tooling Corporation, manufactures a system of drives, carriages, rails and attachments to automate welding guns, cutting torches and other hand-held tools. The equipment is a modular family of portable machines, which provides precise path and constant speed control in any plane or position. These features can result in improved weld or cut quality, increasing production rates and decreasing production costs.

Cambco, Inc.

Booth 554

P.O. Box 37305
Houston, TX 77237
Ph: 713.781.9702
Fax: 713.781.0193
www.cambcoinc.com

CAMBCO, Inc.



Cambco, Inc. celebrates 20 years of service to the structural-steel fabrication industry in 2004. Cambco offers eight different models, from the 216-ton Model 42D to the 836-ton Model 1700, which will camber grade 50 beams as large as a W40x397. Special versions are available for conveyor-fed applications. All models are available as complete ready-to-operate machines or as "do-it-yourself" hydraulics and design kits.

Carboline

Booth 444

350 Hanley Industrial Ct.
St. Louis, MO 63144
Ph: 314.644.1000
Toll-Free: 800.848.4645
Fax: 314.644.2246
robin_frye@carboline.com
www.carboline.com

Carboline Company offers products for solving steel corrosion problems through protective coverings, coatings, and linings. Product lines include permanent zinc primers, rapid-cure shop primers and intermediate coats, and long-term weathering finishes. Single- or multiple-coat shop-friendly systems are Carboline's specialty. Coating systems can be selected to last 3 months or 30 years.

Cerbaco, Ltd.

Booth 426

809 Harrison St.
Frenchtown, NJ 08825
Ph: 908.996.1333
Fax: 908.996.0023
sales@cerbaco.com
www.cerbaco.com

Cerbaco will provide samples from its line of 500+ configurations of non-metallic weld backings that permit finished-quality, full-penetration welds from one side. Where one-sided welding is not desirable, the backings eliminate the need for arc gouging or heavy grinding prior to second-side welding. The company specializes in custom configurations and formulations. Technical assistance and free custom design services will be offered.

Chicago Metal Rolled Products

Booth 452

3715 S. Rockwell St.
Chicago, IL 60632
Ph: 773.523.5757
Fax: 773.650.1439
gwendt@cmrp.com
www.cmrp.com

Roll-curling of structural steel, sheet and plate to a specified radius. Angles, bars, beams, channels, rail, pipe, and tees—all curved on 50 specialized rolling machines. Three-day, two-day, one-day, or same-day service. The world's largest bending machines roll up to W44x295 beams both the "easy way" and the "hard way," as well as pipes up to 20" diameter. Also, curved stair stringers, helical handrails, ellipses, and off-axis bends.

CML USA Inc. Ercolina

Booth 126

8506 N. Fairmount
Davenport, IA 52806
Ph: 563.391.7700
Fax: 563.391.7710
dtunis@ercolina-usa.com
www.ercolina-usa.com

Computers and Structures Inc.

Booth 253

1995 University Ave., Ste. 540
Berkeley, CA 94704
Ph: 510.845.2177
Fax: 510.845.4096
info@csiberkeley.com
www.csiberkeley.com

For three decades, ETABS has been used for building analysis and design software. ETABS has evolved into a completely integrated building analysis and design environment. The system is built around an object-based GUI and is powered by targeted special-purpose algorithms for analysis and design, with interfaces for drafting and manufacturing. ETABS can design simple 2-D frames or perform nonlinear static and dynamic analysis of a complex high-rise building using automatic drift control.

Controlled Automation, Inc.
Booth 659

P.O. Box 888
Bauxite, AR 72089
Ph: 501.557.5109
Fax: 501.557.5618
www.controlledautomation.com



Controlled Automation was established in 1986 and is a manufacturer of machinery, handling equipment, and controls for the steel-fabricating industry. Controlled Automation builds angle lines, beam-punch lines, drill lines, plate-punching and burning machines, and material-handling equipment. Re-manufacturing and retrofit packages are also available for older machines. All new machines are manufactured in the USA. Complete plant systems and plant-design services are available.

Copperweld
Booth 264

1855 E. 122 St.
Chicago, IL 60633
Toll-Free: 800.895.7899
Fax: 773.646.6128
ewolf@copperweld.com
www.copperweld.com

Copperweld manufactures mechanical and structural HSS. Manufacturing facilities in Chicago provide the industry with square sizes of 1x1x.065 through 16x16x.625, and associated rectangles and rounds. Copperweld is the home of the patented Kleenkote product line. Kleenkote is primed weldable HSS that provides benefits in manufacturing for bottom-line cost savings.

CoreBrace, LLC
Booth 550

5955 W. Wells Park Rd.
West Jordan, UT 84088
Ph: 801.280.0701
Fax: 801.280.0069
andyh@corebrace.com
www.corebrace.com

CoreBrace is the first domestic supplier of the Buckling-Restrained Brace (BRB), an economical, state-of-the-art, high-performance seismic device. BRBs don't buckle! Instead they smash and stretch plastically, damping earthquake forces. They perform the same in both tension and compression, dissipating energy through smooth stable hysteretic behavior. The steel core is supported by an outer casing that prevents buckling.

Corus Group
Booth 317

475 N. Martinrale Rd., Ste. 400
Schaumburg, IL 60173
Ph: 847.619.0400
Fax: 847.619.0468
pete.joyce@corusgroup.com
www.corusgroup.com

CSC (UK) Ltd
Booth 165

Yeadon House, New Street Pudsey
Leeds, UK, England LS28 8AQ
Ph: 44.113.239.3000
Fax: 44.113.290.0920
joan.mosey@cscworld.com
www.cscworld.com

CSi – Metal Dek Group™
Booth 353

650 Rosewood Dr.
Columbia, SC 29201
Toll-Free: 800.554.5421
Fax: 803.799.6811
www.csisteel.com

With 50 years of service to the construction industry, the CSi – Metal Dek Group™ offers a complete line of roof, floor and form deck. Product lines include Versa-Dek® and Deep-Dek™ for flooring and roofing needs. Specialty options include coil-coating systems and cellular acoustic capabilities.

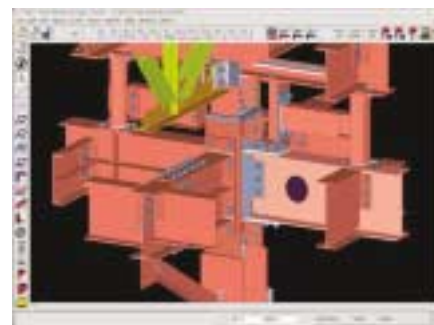
Daito USA, Inc.
Booth 625

1470 Elmhurst Rd.
Elk Grove Village, IL 60007
Ph: 847.437.6788
Fax: 847.437.6789
www.daito-seiki.com

CNC drilling machines for structural beams, and bandsaw machines for structural steel fabricators.

Design Data SDS/2
Booth 113

1501 Old Cheney Rd.
Lincoln, NE 68512
Ph: 402.441.4000
Toll-Free: 800.443.0782
Fax: 402.441.4045
www.dsndata.com



Design Data has more than 20 years of experience producing SDS/2 Detailing Software. Version 7.0 is an example of how this innovation keeps customers on the leading edge of technology. SDS/2 offers automatic connection design and erectibility checks, along with the flexibility of creating parametrics and adaptive detailing, to produce your work on time. The SDS/2 model benefits all steel parties simultaneously. From the engineer's office to the shop floor through the erection of the building, SDS/2 provides a central model to collaborate with all steel partners. SDS/2 helps keep the schedule on time for critical projects.

DetailCad
Booth 345

P.O. Box 2008
Whitefish, MT 59937
Ph: 406.862.7906
www.detailcad.com

DetailCAD® is an automated program working inside AutoCAD® that produces shop details with minimum input and enhancement. Shop details including beams, columns, bracing, stairs, HR and welded frames can be produced directly from framing-plan or piece-by-piece input. Anchor-bolt plans, erection plans, elevations and an advance bill table can be produced from plan-input method. Plan input is done by inputting grid locations, adding columns to grid crossing and then inputting beams and/or joists at each level. Press a button to generate details or 3D model. Piece-by-piece input is done by filling in framing sizes and/or distances, then pressing a button to draw the piece. DetailCAD will produce CNC, punch-card files or plate details for each shop drawing for different CNC equipment.

nascc exhibitors 2004

Long Beach, CA — March 24-27

Dowco Consultants Ltd.

Booth 235

2433 Holdom Ave.
Burnaby, BC Canada V5B 5A1
Ph: 604.606.5800
Fax: 604.606.5818
www.dowcoconsultants.com

Dowco is one of the largest fully automated detailing companies in the world. Dowco's professional solutions are unrestricted by geographical boundaries, and the company serves regional, national and international markets. During 34 years in business, Dowco has embraced new technology and sought innovative ways to improve its detailing techniques.

Esab Welding and Cutting Products

Booth 334

411 S. Ebenezer Rd.
Florence, SC 29501
Ph: 843.664.4411
Toll-Free: 800.ESAB.123
Fax: 843.679.5815
www.esabna.com

For 100 years, ESAB has been an innovator in the welding and cutting industry, with the invention of the coated-stick electrode and processes such as HELIARC and PLASMARC. ESAB Brand names like Oxweld, Purox, Migmaster, Allstate, Arcaloy, Atom Arc, and Dual Shield have become industry standards.

eSUB

Booth 358

11770 Bernardo Plaza Ct., Ste. 370
San Diego, CA 92128
Ph: 858.675.0836
Toll-Free: 800.493.3782
Fax: 858.675.2263
www.esubinc.com

Trackpoint is an online project-management system for subcontractors. Trackpoint contains a full suite of project-management applications, including daily reports, time cards, REI's, change-order requests, submittals, purchase orders, and correspondence. All documents created are logged automatically and linked to a calendar system, which interfaces with Microsoft Outlook.

FabTrol Systems, Inc.

Booth 300

132 E. Broadway, Ste. 636
Eugene, OR 97401
Ph: 541.485.4719
Toll-Free: 888.FABTROL
Fax: 541.485.4302
www.fabtrol.com

Come see what's new in FabTrol MRP, an integrated estimating, material-requirements-planning, and production-management software for steel fabricators. The latest release introduces full import/export support for CIS/2 data to compress project schedules. Other key features include system-wide support for material on order, improved drawing management, modifiable nesting results, new exports for sharing accounting and production-status

data with other systems, optional support for Microsoft SQL Server, and more.

Fein Power Tools

Booth 518

1030 Alcon St.
Pittsburgh, PA 15220
Ph: 412.922.8886
Toll-Free: 800.441.9878
Fax: 412.922.8767
vgrolovic@feinus.com
www.feinus.com

Ficep Corporation

Booth 541

2301 Industry Ct.
Forest Hill Industrial Airpark
Forest Hill, MD 21050
Ph: 410.588.5800
Fax: 410.588.5900
www.ficepcorp.com

Ficep is one of the largest machine-tool manufacturers of structural steel fabricating equipment in the world, with a diverse product range of more than 75 different CNC fabrication lines. At this year's conference, Ficep Corp. will exhibit four CNC products that previously have not been exhibited in North America. Two of the lines will be totally new and represent products that were developed specifically for the North American market.

Fisher & Ludlow

Booth 128

7100 Industrial Rd.
Florence, KY 41042
Toll-Free: 800.334.2047
Fax: 606.282.7702
www.fisherludlow.com

Fisher & Ludlow is a full line manufacturer of grating and expanded metal products. With seven locations, three in the United States and four in Canada, service for our customers is never far away. Our products include bar grating, heavy-duty grating, aluminum grating, gripspan, shurgrip safety grating, fiberglass grating and expanded metal.

Franklin Manufacturing, Inc.

Booth 517

P.O. Box 998
Russellville, AL 35653
Ph: 256.332.6654
Fax: 256.332.0143
dmoore@fmi-solutions.com
www.fmi-solutions.com

G.W.Y., Inc.

Booth 441

217 Forest Rd.
P.O. Box 293
Greenfield, NH 03047
Toll-Free: 888.838.6500
Fax: 603.547.3801
gwynne@gwyinc.mv.com
www.gwyinc.com

Girder-Slab Technologies, LLC

Booth 248

P.O. Box 4126
Cherry Hill, NJ 08034
Ph: 856.424.7880
Toll-Free: 888.478.1100
Fax: 856.424.6880
www.girder-slab.com

The Girder-Slab® system is a composite steel-and-precast-concrete assembly designed for use in mid- to high-rise residential structures. The new system incorporates a special steel girder known as an open-web dissymmetric beam (or D-Beam®) supporting precast hollow-core concrete slabs grouted in place to form a composite assembly.

Haydon Bolts, Inc.

Booth 429

1181 Unity St.
Philadelphia, PA 19124-3196
Ph: 215.537.8700
Fax: 215.537.5569
mcfriel@haydonbolts.com
www.haydonbolts.com



Haydon Bolts manufactures and distributes all types of structural fasteners, including A325-1, A325-3, A490-1, A490-3, A449 & A354. Haydon carries a full line of TC Bolts in F1552 (A325) and A490. All products are offered plain, hot dip galvanized, mechanically galvanized and in weathering steel. Haydon manufacturers anchor rods, tie rods, turnbuckle assemblies and other specials, 1/2" to 4" diameter in any length. Also available is a full line of electric tools for both hex structural and TC-bolt installation. Haydon supplies both domestic and imported products with full material certifications, performs in-house ro-cap tests, and supplies products for DOT projects.

Heckmann Building Products, Inc.

Booth 568

1501 N. 31st Ave.
Melrose Park, IL 60160
Ph: 708.865.2403
Toll-Free: 800.621.4140
Fax: 708.865.2640
heckmann@worldnet.att.net
www.heckmannbuildingprods.com

Manufacturer of the Twist-On Groutless Masonry Anchor System; 2003 *Modern Steel Construction* Hot Product Winner! Heckmann also manufactures masonry-to-steel anchoring systems that are welded or hooked onto steel columns, channel-slot systems, dovetail systems, brick veneer anchors, wall tiles, cavity wall moisture-control systems, the Pos-I-Tie® anchoring system, stone anchors, flashings, control joints, and more.

Hilti, Inc.

Booth 228

5400 S. 122nd East Ave.
Tulsa, OK 74146
Ph: 918.252.6000
Toll-Free: 800.879.8000
Fax: 918.252.6742
barthau@us.hilti.com
www.us.hilti.com

Hougen Manufacturing, Inc.

Booth 364

3001 Hougen Drive
Swartz Creek, MI 48473
Ph: 810.635.7111
Fax: 810.635.8277
www.hougen.com

Hougen® portable magnetic drills and Rotabroach® annular cutters put holemaking capabilities in your hands; whether on-site or in the shop. Fourteen models let you custom match your needs. Choose from the HMD150 that fits in tight quarters and drills up to 1-3/8" diameter thru 1" deep, the HMD904 for drilling up to 1-1/2" diameter and 2" deep, and others that have the strength to produce 3-1/16" holes thru 3" material.

Hyd-Mech Group Limited

Booth 753

1079 Parkinson Rd.
Woodstock, ON Canada N4S 8A4
Ph: 877.276.7297
www.hydmech.com

iCAD

Booth 509

39560 Stevenson Pl., Ste. 220
Freemont, CA 94539
Ph: 510.791.6000
Fax: 510.217.6666
mn@icadsoft.com
www.icadsoft.com

iCAD specializes in structural steel and precast-and prestressed-concrete design and detailing services. iCad uses Autocad and Xsteel to prepare shop drawings. Services include preparation of detailed

shop drawings, erection plans, ABMs, field and shop bolt lists, and material summaries. Drawings are prepared in accordance with AISC "Detailing for Steel Construction" and "PCI" standards. Connection designs are also available, based on the information provided in contract drawings.

Industrial Galvanizers America, Inc.

Booth 469

9520 E. Broadway Ave.
Tampa, FL 33619
Ph: 813.621.8990
Toll-Free: 800.776.4258
813-621-8950
bpittman@indgalv.net
www.indgalv.net

Infra-Metals Co.

Booth 540

8 Pent Hwy
Wallingford, CT 06492
Ph: 203.294.2980
Toll-Free: 800.243.4410
Fax: 203.294.2993
dp@infra-metals.com
www.infra-metals.com

Institute of the Ironworking Industry/IMPACT

Booth 428

1750 New York Ave N.W.
Washington, DC 20006
Ph: 202.783.3998
Fax: 202.393.1507
instituteiw@aol.com
www.instituteiw.org

The total energy and resources of IMPACT (Ironworker-Management Progressive Action Cooperative Trust) are devoted to promoting "The Union Erection Industry." More contracts for signatory employers and more jobs for Union Ironworkers. This is the goal and constant mission.

Inventory Sales Company

Booth 446

9777 Reavis Rd.
St. Louis, MO 63123
Ph: 314.776.6200
Toll-Free: 800.272.7883
Fax: 314.776.0054
www.inventorysales.com

Inventory Sales Co. is a source for steel contractors and erectors. Come to the booth to see tone tools and stud welders that Inventory Sales sells, rents and repairs. In addition to the tools, the company carries one of the largest Midwest inventories of shear connectors, and A325 structural bolts and tension-control bolts. The steel fabrication shop makes embedment plates and miscellaneous steel fabrications to spec. Inventory Sales also carries all varieties of strut channel and accessories.

J. B. Long Inc.

Booth 619

110 W. Arch St., #214
Fleetwood, PA 19522
Ph: 610.944.8840
Fax: 610.944.0789
jim@jblong.com
www.jblong.com

J. B. Long, Inc. has supplied structural steel and misc. iron details to the fabrication industry for more than 18 years. The firm is certified under the NISD Quality Procedures Program. Eleven detailers of a staff of 19 are certified under the NISD Individual Detailer Certification program. Detailers primarily use SteelLogic (an AutoCAD-based detailing package) and Xsteel to create details. J. B. Long focuses on small commercial projects under 500 tons, while not precluding the occasional larger project.

J & B Specialty Tools Inc

Booth 156

526-A Paradiseway West
Greenwood, IN 46143
Ph: 317.883.1849
Fax: 317.883.1949
www.beamgaugetool.com

J & B's beam gauge tool won a *Modern Steel Construction* Hot Products Award in August 2003; and now also offers a 2' stand-alone adjustable square, with anodized alum, that comes with information about stairs with landings. No more gaps. Two more new tools available within six months. The tools make erection easier and on time.

Kaltenbach

Booth 641

6775 Inwood Dr.
Columbus, IN 47201
Ph: 812.342.4471
Toll-Free: 800.825.5729
Fax: 812.342.2336
www.kaltenbachusa.com

Kaltenbach offers structural fabrication equipment. Kaltenbach manufactures cold saws, bandsaws, CNC drilling machines, plate-processing equipment, and robotic copers.

Kottler Metal Products, Inc.

Booth 544

1595 Lost Nation Rd.
Willoughby, OH 44094
Ph: 440.946.7473
Toll-Free: 800.678.0808
Fax: 440.946.7655
www.kottlermetal.com

Established in 1915, Kottler Metal Products, Inc. rolls pipe, HSS, and structural shapes. A new facility and experienced craftsmen allow Kottler Metal to supply customers with one of the largest bending capacities in the United States. Kottler rolls up to 48" Channel and I-beam, easy/hard way, 20" pipe tube, rail, pipe, and tee, with minimal distortion.

nascc exhibitors 2004

Long Beach, CA — March 24-27

Kubes Steel Limited

Booth 365

930 Arvin Ave.
Stoney Creek, ON Canada L8E 5Y8
Ph: 905.643.1229
Fax: 905.643.4003
kubes@kubesteel.com
www.kubesteel.com



LeJeune Bolt Company

Booth 427

3500 W. Hwy. 13
Burnsville MN 55337
Ph: 952.890.7700
Toll-Free: 800.872.2658
Fax: 952.890.3544
jgreene@lejeunebolt.com
www.lejeunebolt.com

LeJeune has provided structural bolting and tension-control fasteners for 27 years. LeJeune is committed to supporting its customers from contract review and quotation, to project completion and beyond. LeJeune is a single service for all structural bolt and fastening needs, including weld studs, anchors and adhesives, anchor bolts, tool sales, tool rental and spare parts.

The Lincoln Electric Company

Booth 259

22801 St. Clair Ave.
Cleveland, OH 44117
Ph: 216.481.8100
Toll-Free: 888.921.WELD
Fax: 216.486.1751
www.lincolnelectric.com

Lincoln Electric will showcase arc-welding equipment and consumables especially developed for the rigors of the construction industry. Consumables will include Lincoln's self-shielded flux-cored InnerShield® welding wires intended for use in applications required to comply with FEMA 353 Seismic Zone guidelines. Other electrodes, intended for stainless steel, pipe welding and general construction will be displayed and demonstrated. Equipment includes engine-driven welder/generators, rugged construction wire feeders and submerged-arc tractor guided systems.

Lohr Structural Fasteners, Inc.

Booth 528

2355 Wilson Rd.
Humble, TX 77396
Ph: 281.446.6766
Toll-Free: 800.782.4544
Fax: 281.446.7805
klohr@aol.com
www.lohrfasteners.com

Maeda Metal Industries, Ltd.

Booth 448

No 14-3 Fukae Kita 3 Chome
Higashinari Ku, Osaka Japan 5370001
Ph: 81.6.6976.5567
Fax: 81.6.6973.9734
www.tonetool.co.jp

Maeda Metal Industries, Ltd. specializes in electric wrenches, which install both tension-control and heavy-hex bolts. Maeda products are a solution for job health and safety, cost performance and simplicity for harsh applications. Stop by the booth for more information.

Marks Metal Technology

Booth 360

10300 SE Jennifer
Clackamas, OR 97015
Ph: 503.656.0901
Fax: 503.656.1985
scott@marksmetal.com
www.marksmetal.com

For more than 50 years, Marks Metal Technology (MMT) has provided metal fabrication and processing. MMT's Diamond Curve technology is suited for curving AESS wide-flange beams the hard way of web. Now many large sections and those formed from plate can be curved at MMT.

Maverick Tube Corporation

Booth 450

16401 Swingley Ridge Rd., Ste. 700
Chesterfield, MO 63017
Ph: 636.733.1600
Toll-Free: 800.840.8823
Fax: 636.733.1873
www.maverick-tube.com

Maverick Tube Corporation produces HSS steel products for industrial and energy applications. Maverick's industrial products, used in construction applications and the manufacturing of other value-added products, comprises structural tubing (HSS), conduit, standard pipe, mechanical tubing and pipe piling. Maverick's energy-related products include Oil Country Tubular Goods, line pipe, coiled tubing, coiled line pipe and subsea umbilicals.

National Commission for the Certification of Crane Operators

Booth 153

2750 Prosperity Ave., Ste. 505
Fairfax, VA 22031
Ph: 703.560.2390
Fax: 703.560.2392
phillipkinser@qwest.net

National Council of Structural Engineers

Booth 158

203 N. Wabash, Ste. 2010
Chicago, IL 60601
Ph: 312.372.5708
Fax: 312.372.5673
execdir@ncsea.com
www.ncsea.com

NCSEA represents nearly 40 state and regional structural engineers association. The council addresses professional, technical, and education issues of interest to structural engineers, and provides a resource for those who need to communicate with the profession. The Council publishes STRUCTURE magazine monthly, participates in developing national building codes, and implements a Structural Engineers Emergency Response Plan. NCSEA is moving forward with a National Board Certification for structural engineers and sponsors annual Awards for Excellence in Structural Engineering.

National Institute of Steel Detailing, Inc.

Booth 232

7700 Edgewater Dr., Ste. 670
Oakland, CA 94621
Ph: 510.568.3741
Fax: 510.568.3781
nisd@pachell.net
www.nisd.org

The National Institute of Steel Detailing (NISD) is an international association that advocates, promotes and serves the interests of the steel detailing industry. The object of the Institute's programs and documents is to improve detailers' knowledge, verify their skills, and qualify their ability to manage properly detailed projects.

National Steel Bridge Alliance

Booth 310

One E. Wacker Dr., Ste. 3100
Chicago, IL 60601
Ph: 312.670.7010
Fax: 312.670.5403
www.nsbaweb.org

The National Steel Bridge Alliance (NSBA) is organized as a unified voice for the steel bridge industry. The NSBA seeks to facilitate/coordinate industry efforts to enhance the deployment of steel bridge design and construction in the U.S.A. through technology confidence building, infrastructure strengthening, and market awareness. The NSBA focuses on assisting its membership with bridge design needs and technical information.



NEA—The Association of Union Constructors

Booth 149
1501 Lee Hwy., #202
Arlington, VA 22209
Ph: 703.524.3336
Fax: 703.524.3364
www.nea-online.org

NEA—The Association of Union Constructors was organized in 1969 as a national trade association dedicated to providing its members with high-level labor relations and safety services, as well as promoting positive labor-management programs in the construction industry. The NEA's membership comprises union contractors, local employer organizations and industry suppliers. NEA contractors are committed to improving the union construction industry through advances in contractor safety and health, competitive marketing, and labor-management cooperation.

Neilsoft

Booth 719
3055 Plymouth, Ste. 205
Ann Arbor, MI 48105
Ph: 734.623.8611
Fax: 734.623.8613

Nelson Stud Welding, Inc.

Booth 416
20621 Unit B, East Valley Blvd.
Walnut, CA 91789
Ph: 909.468.2105
Toll-Free: 800.635.9355
Fax: 909.468.2112
steve.whitham@nelsonstud.com
www.nelsonstudwelding.com

Nicholas J. Bouras, Inc.

Booth 254
25 DeForest Ave.
Summit, NJ 07902
Ph: 908.277.1617
Toll-Free: 800.631.1215
Fax: 908.277.1619
www.njb-united.com

Nicholas J. Bouras, Inc. is the sales, engineering and detailing subsidiary of Bouras Industries, Inc., a manufacturer of steel construction products with plants and sales offices in 16 states. United Steel Deck, Inc. (USD), the steel deck affiliate, manufactures a complete line of floor deck, roof, deck, an electrified floor deck system, and wall and roof panels. USD is an active member of the Steel Deck Institute. The new Columbia Joist Co. (NCJ), a joist manufacturing affiliate, is a member of the Steel Joist Institute, and manufactures a full line of SJI compliant K, LH, DLH, series joists, and joists girders.

Nitto Kohki U.S.A., Inc.

Booth 522
4525 Turnberry Dr.
Hanover Park, IL 60133
Ph: 630.924.9393
Toll-Free: 800.323.8828
Fax: 630.924.0303
www.nittokohki.com

Nitto Kohki manufactures automatic-feed magnetic-base drills that use self-regulate feed speed for optimum cutting with safety features. These machines, when using JetBroach carbide-tipped annular cutters, can increase production while reducing labor hours and hazardous work. Visit the booth for a demonstration. Nitto Kohki also manufactures steelworking tools like portable hydraulic punches, bevelers, and pneumatic and electric power tools.

Nucor Fastener—Indiana

Booth 201
6730 County Rd. 60
P.O. Box 6100
St. Joe, IN 46785
Ph: 260.337.1626
Toll-Free: 800.955.6826
Fax: 260.337.1726
jwitucki@nucor-fastener.com
www.nucor-fastener.com

Manufacturer of domestic steel hex-head cap-screws, build-to-print specials, steel hex structural bolts and nuts in both inch and metric sizes, and dome-head tension-control assemblies in various grades and finishes.

Nucor-Yamato Steel Company

Booth 201
P.O. Box 1228
Blytheville, AR 72316
Ph: 870.762.5500
Toll-Free: 800.289.6977
Fax: 870.763.9107
mengstrom@aol.com
www.nucoryamato.com

Steel manufacturer of wide-flange structural steel shapes, steel, H-piling and sheet piling, angle, channel, miscellaneous channel, standard and car-building shapes. Grades include ASTM A36, ASTM A328, ASTM A572, ASTM A588, ASTM A690, ASTM A709 and ASTM A992.

Ocean Machinery

Booth 727
3081 E. Commercial Blvd.
Ft. Lauderdale, FL 33308
Ph: 954.351.0899
Toll-Free: 800.286.3624
Fax: 954.351.9472
www.oceanmachinery.com

Ocean Machinery will exhibit the Ocean Avenger beam-drill line. Taking up only about half the floor space required for conventional drill lines and costing less than half, the Avenger is capable of processing beams, angles, channels, tubes and plates up to 40" wide. Built by Peddinghaus with Siemens control and components, the Avenger uses Peddimat software for integration with major detailing software.

Omnitech Associates

Booth 250
P.O. Box 20792
Oakland, CA 94620
Ph: 510.658.8328
Toll-Free: 888.8.DESCON
Fax: 510.595.0373
www.desconplus.com

Omnitech Associates provides DesconWin and Descon Brace software for designing steel structure connections. DesconWin designs shear and moment connections including beam-to-column flange, beam-to-column web, and beam-to-girder connections, beam and column splices, and connections to HSS columns. Descon Brace designs braced-frame connections including Diagonal, Chevron, K, and Knee Braces, and brace connection to column bases. Both programs generate detailed calculation reports, drawings, and DXF files. ASD and LRFD versions available.

Peddinghaus Corporation

Booth 523
300 N. Washington Ave.
Bradley, IL 60915
Ph: 815.937.3800
Fax: 815.937.4003
www.peddinghaus.com



Peddinghaus Corporation will introduce new plate and structural fabrication technology at the NASCC. The FPDB 2500/3 plate-fabrication center combines punching, drilling, carbide marking, and thermal cutting (via plasma or oxy-fuel) into one compact machine. Plate components from 4' wide x 1/4" up to 96" wide x 3" thickness can be processed in one pass. The FPDB 2500 processes every AISC plate connection. Peddinghaus will exhibit the new BDL 1250/9 structural drilling machine, with enhancements for beams, columns, tubing, and related shapes. It will be exhibited with a new mitring band saw for processing sections up to 50" wide.

nascc exhibitors 2004

Long Beach, CA — March 24-27

Peterson Beckner Industries **Booth 406**

1310 Spears Rd.
Houston, TX 77067
Ph: 281.872.7722
Fax: 281.872.5155
www.petersonbeckner.com

PBI provides structural steel erection services for the commercial, industrial, and institutional markets. PBI specializes in complex structures, like: sports arenas, convention center and hotel complexes, industrial process and power plants, hospitals, airports, and bridges. PBI operates throughout North America from its home office in Houston.

PPG High Performance Coatings **Booth 333**

1PPG Place-37 S
Pittsburgh, PA 15272
Ph: 412.434.3131
Toll-Free: 800.441.9695
Fax: 888.807.5123
mbolton@ppg.com
www.ppghpc.com

At the NASCC, PPG High Performance Coating will feature high-durability, low-VOC coatings for structural steel. PPG also will feature PPG fire-protective coatings for structural steel.

The Quebec Connection **Booth 409**

2094 Beaugard
Laval QC Canada H7T 2M9
450.688.7336
450.688.3289
trusquin@videotron.ca



The Quebec Connection is a group of six steel detailing offices. The staff of detailers, checkers and project managers has years of experience. The latest software helps them handle steel projects of any size. They can meet your schedule for large and complex buildings or small and simple ones.

Quincy Joist Company **Booth 133**

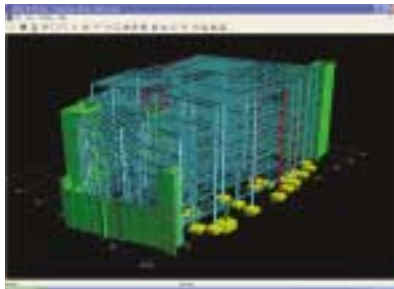
520 S. Virginia St.
Quincy, FL 32351
Ph: 850.875.1075
Toll-Free: 800.277.1075
Fax: 850.875.1277
donna.hall@quincyjoist.com
www.quincyjoist.com

RAM International **Booth 123**

5225 Avenida Encinas, Ste. E
Carlsbad, CA 92008
Ph: 760.431.3610
Toll-Free: 800.726.7789
Fax: 760.431.5214
www.ramint.com



RAM International will demonstrate these products at the NASCC: RAM Structural System: software for the analysis, design and drafting of buildings. RAM Advanse: general purpose finite-element analysis and design. RAM Connection: customizable steel-connection design. RAM CADstudio: drawing management software for AutoCAD. RAM Concept: design of reinforced or post-tensioned floors and foundations. RAM Perform: non-linear performance-based design and collapse analysis. RAM also will demonstrate its EDI capabilities in AISC's EDI booth.



Research Engineers International **Booth 141**

22700 Savi Ranch Pkwy.
Yorba Linda, CA 92887
Ph: 714.974.2500
Toll-Free: 800.367.7373
Fax: 714.974.4771
araceli@ca.reiusa.com
www.reiworld.com



For 21 years, REI's STAAD.Pro has been a structural analysis and design solution for 19,000 engineering companies and 160,000 users in 85 countries. With STAAD.Structural Suite, STAAD.Pro has evolved into an integrated structural engineering solution, including STAAD.Pro 2004, STAAD.etc,

STAAD.foundation and Sectionwizard. With Open-STAAD, REI can integrate STAAD.Pro with third-party solutions like LARSA for advanced building/bridge design, Structural Desktop and Tekla Structures—Structural Information Modeling.

RISA Technologies **Booth 341**

26632 Towne Center Dr., Ste. 210
Foothill Ranch, CA 92610
Toll-Free: 800.332.RISA
Fax: 949.951.5848
info@risatech.com
www.risatech.com

RISAFloor software integrates with a general analysis package, RISA-3D. Designing both the gravity and lateral systems on one model, add moving loads, one-way members and springs, tapered wide flanges, plate/shell components, and other items. RISA-3D is a general analysis and design program with total integration. Automatic physical modeling allows definition of members as they exist in the field rather than as multiple segments. RISASection, RISABase and RISAFoot provide biaxial analysis of custom sections, footings or base plates.

The S.D.I. Stair Connection **Booth 825**

360 Camelot Dr.
Fayetteville, GA 30214
Ph: 770.719.7936
Fax: 770.719.3681
bparker360@earthlink.net

Steel detailing firm provides shop and field drawings for miscellaneous and light structural fabrication shops.

Seismic Structural Design **Associates, Inc.**

Booth 362
P.O. Box 3114
Camdenton MO 65020
Ph: 573.317.9463
Toll-Free: 866.750.7732
Fax: 573.317.1037
www.ssd.net

The Sharon Companies, Ltd. **Booth 147**

959 Lake Rd.
Medina, OH 44256
Toll-Free: 800.723.3225
Fax: 330.723.2350
www.sharonstair.com

Sharon Drop-In Stairs are a manufactured building component. Sharon engineering, production, and craftsmanship keep stair quality up and costs down. Sharon's staff features more than 750 years of accumulated experience, and more than \$200 million in stairway sales.

Sherwin-Williams

Booth 323

101 Prospect Ave.

Cleveland, OH 44115

Toll-Free: 800.524.5979

www.sherwin-williams.com/im



Sherwin-Williams is a single-source for coatings and equipment. Sherwin-Williams is the largest U.S. industrial and marine coatings manufacturer, with more than 2,600 locations and more than 135 years experience in corrosion-control technology.

SidePlate Systems, Inc.

Booth 246

23422 Mill Creek Dr., Ste. 215

Laguna Hills, CA 92653

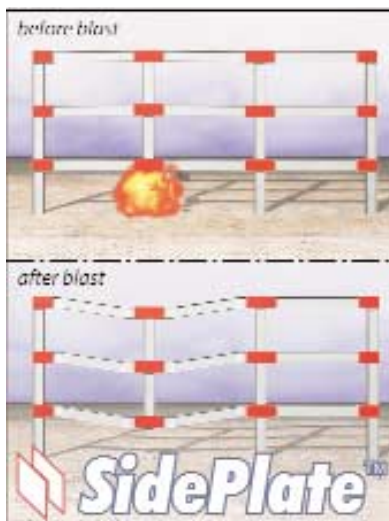
Toll-Free: 800.475.2077

Fax: 949.305.6395

hgallart@sideplate.com

www.sideplate.com

Let SidePlate Systems help you respond to today's multi-hazard design challenges at reduced construction costs with SidePlate™ steel frame connection technology. A single structural framing sys-



tem for wind and earthquake resistance; blast and impact hardening; fire attack; and progressive collapse mitigation. Fully compliant with current U.S. Government Progressive Collapse Design Standards: discrete beam-to-beam continuity; connection resilience; connection redundancy; proven connection rotational capacity. Unlimited prequalification of beam and column sizes, including deep columns ICC-ES Legacy Report ER-5366.

SMI Joist Company/SMI Steel Products

Booth 231

2305 Ridge Rd., Ste. 202

Rockwall, TX 75087

Ph: 972.772.0769

Fax: 972.772.0882

billy.milligan@joists.com

www.smisteelproducts.com



SMI Joist division is a leading producer of long-span steel joists, and deep long-span steel joists and joist girders, with coast-to-coast production facilities and nationwide service. SMI

Steel Products is the exclusive manufacturer of SmartBeams® in North and South America. The SmartBeam® is a structural steel beam suited for composite floor construction. SMI is part of the CMC Steel Group of Commercial Metals Company (NYSE:CMC) headquartered in Irving, TX.

Soft Steel Inc.

Booth 306

7231 Boulder Ave., #226

Highland, CA 92346

Ph: 909.863.9191

Fax: 909.863.9168

mike@softsteelinc.com

www.softsteelinc.com

St. Louis Screw & Bolt

Booth 431

6900 N. Broadway

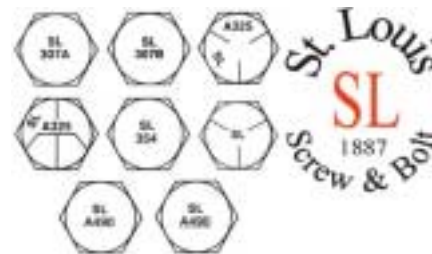
St. Louis, MO 63147

Ph: 314.389.7500

Toll-Free: 800.237.7059

Fax: 314.389.7510

www.stlouisscrewbolt.com



St. Louis Screw & Bolt manufactures and distributes all types of structural fasteners including A325-1, A325-3, A490-1, A490-3, A449, A354. Also carries a full line of TC Bolts in F1554 (A325) and A490. St. Louis offers products plain, hot-dip galvanized, mechanically galvanized and in weathering steel. Size ranges from 1/2" to 4" diameter in any length range. Also supplies anchor rods in grades 36, 55 and 105, and A449 or stainless steels. St. Louis carries a full line of tools for both hex structural bolt and TC bolt installation. An in-house lab is certified by A2LA and is FQA compliant. All products are melted and manufactured in the USA. Products can be supplied to all state DOT's and are Cal-Trans approved. In-house ro-cap tests also are performed.

Steel Erectors Association of America

Booth 267

2216 W. Meadowview Rd., Ste. 115

Greensboro, NC 27407

Ph: 336.294.8880

Fax: 413.208.6936

executivedirector@seaa.net

www.seaa.net

The Steel Erectors Association of America [SEAA] is dedicated to advancing the interests and needs of all engaged in building with steel. The Association's objectives in achieving this goal include the promotion of safety, education, and training programs for steel erector trades, development and promotion of standards, and cooperation with others in activities that impact the commercial construction business.

Steel Founders' Society of America

Booth 167

205 Park Ave.

Barrington, IL 60010

Ph: 847.382.8240

Fax: 847.382.8287

poweleit@aticorp.org

www.sfsa.org

Steel Founders' Society of America (SFSa) is a not-for-profit trade association whose mission is to promote and develop steel castings. SFSa's membership is limited to steel casting producers. We strive to develop new technology, exchange technical and operating experience, and expand the steel casting marketplace.

nascc exhibitors 2004

Long Beach, CA — March 24-27

Steel Joist Institute

Booth 263

3127 10th Ave. N. Ext.
Myrtle Beach, SC 29577-6760
Ph: 843.626.1995
Fax: 843.626.5565
rhackworth@steeljoist.org
www.steeljoist.org

The Steel Joist Institute is a not-for-profit organization composed of steel joist manufacturers with professional engineering staffs that sets and maintains the standards for the industry. These standards include specifications, load and weight tables, and a recommended code of standard practice. The Institute also invests in research related to steel joists. SJ offers a complete library of publications, and training and research aids to include periodic seminars for CEU credit.

Steel Storage Systems

Booth 331

6301 Dexter St.
Commerce City, CO 80022
Ph: 303.287.0291
Toll-Free: 800.442.0291
Fax: 303.287.0159
dporter@steelstorage.com
www.steelstorage.com

Steel Structures Technology Center, Inc.

Booth 329

24110 Meadowbrook Rd., Ste. 104
Novi, MI 48375
Ph: 248.893.0132
Fax: 248.893.0134
rshaw@steelstructures.com
www.steelstructures.com

The SSTC offers reference and training materials, including the Structural Bolting Handbook, Structural Welding Quality Handbook, Structural Steel Shop Inspector's Handbook, and Structural Steel Inspection Workbook. SSTC training seminars include Structural Steel Inspection, Structural Welding: Design and Specification, and Steel Connections: Seismic Application. SSTC offers self-study correspondence courses, including a complete high-strength bolting series. SSTC also provides consulting services in steel fabrication and erection quality and inspection, including dispute resolution.

SteelCad Consulting Corporation

Booth 335

110 Timberlachen Cir., Ste. 1000
Lake Mary, FL 32746
Toll-Free: 800.456.7875
sales@steelcad.com
www.steelcad.com

SteelCad offers automated steel detailing and fabrication software. SteelCad complies with AISC and CISC standards and detailing methods, and details beams, columns, vertical and horizontal bracing, stairs, and ladders. It produces erection drawings, gather sheets, material lists, cut lists, and production control or CNC data.

Stites & Harbison PLLC

Booth 233

400 W. Market St., #1800
Louisville, KY 40202
Ph: 502.587.3400
Toll-Free: 800.392.0027
Fax: 502.587.6391
www.stites.com

Stites & Harbison, PLLC, is a law firm based in the Southeast, specializing in complex transactions, litigation and regulatory matters. Stites & Harbison has 225 attorneys and a support staff of more than 200. Almost one third of the attorneys are women. The firm's attorneys are currently admitted to practice in 20 states including DC; ten are Registered U.S. Patent Attorneys.

Strand7 Software

Booth 327

541 Kent St., Ste. 1, Level 7
Sydney, NSW Australia 2000
Ph: 61.2.9264.2977
Fax: 61.2.9264.-2066
info@strand7.com
www.strand7.com

StrucSoft Solutions

Booth 252

5375 Pare St., Ste. 201
Montreal QC Canada H4P 1P7
Ph: 514.341.2028
Fax: 514.341.8856
www.strucsoftsolutions.com



StrucSoft is dedicated to the support and servicing of software solutions. StrucSoft's engineers and technicians work with clients to benefit on their software investment. As engineering software specialists, we cover structural, mechanical, process/instrumentation and woodworking disciplines to meet project and budget requirements. StrucSoft is the North American distributor of PROSTEEL3D, a 3D AutoCAD-based modeling/detailing package with BOM, CNC output, featuring COM technology for further customization capability.

Structural Stability Research Council

Booth 138

University of Missouri-Rolla
301 Butler-Carlton Hall
Rolla, MO 65409-0030
Ph: 573.341.6610
Fax: 573.341.4476
ssrc@umr.edu
www.stabilitycouncil.org

The Council, which includes engineers from public organizations, private corporations and universities, offers guidance to specification writers and practicing engineers with publications like the Guide to Stability Design Criteria for Metal Structures. The Council also conducts seminars related to the stability of columns, beams and frames, and publishes the proceedings from its Annual Stability Conference, which highlight new solutions to structural problems before they are published in technical journals.

Stud Welding Associates

Booth 144

41515 Schaden Rd.
Elyria, OH 44035
Ph: 440.324.3042
Toll-Free: 800.874.7860
Fax: 440.324.3301

Stud Welding Associates offers a full line of stud welding equipment, weld studs and accessories backed up with a network of product and service warehouses around the country. Stud Welding Associates is committed to customer satisfaction and recently earned ISO 9001-2000 registration of its quality system. Ask for a demonstration of the Rapid Ferrule Dispenser, a method to save time and money on your next job.

Taylor Devices Inc.

Booth 351

90 Taylor Dr.
North Tonawanda, NY 14120
Ph: 716.694.0800
Fax: 716.695.6015
bobschneider@taylordevices.com
www.taylordevices.com

Taylor Devices manufactures fluid viscous damping devices, shock-transmission units and tuned-mass dampers for earthquake, wind and vibration protection of buildings, bridges and many other structures. Other products include lock-up devices, fluid viscoelastic dampers, cable dampers, liquid springs, crane buffers and other custom shock absorber products.

Tekla
Booth 241
 600 Town Park Ln., Ste. 175
 Kennesaw, GA 30144
 Ph: 770.426.5105
 Toll-Free: 877.835.5265
 Fax: 770.919.0574
 www.tekla.com



Tekla conducts R&D to advance intelligent, parametric 3D modeling for steel structures. As a result, Tekla Xsteel has evolved into Tekla Structures—a new way for the entire structural design sector to share project information and collaborate in real-time. Tekla Structures enables interoperability and project management through real-time model sharing across all phases of construction: design-analysis-detailing-fabrication. With Tekla Structures, all contract, detail drawings and reports are generated directly from the model, at any time. Everything is integrated into one, modular software solution which connects you and your partners. And it includes the data exchange standards you expect, like the latest CIS/2 format, so existing investments can be integrated with Tekla's technology. Now everyone from general contractors to designers, engineers, detailers and fabricators can benefit from the advantages of an intelligent 3D model.

Tension Control Bolting, Inc.
Booth 443
 5855 Obispo Ave.
 Greenfield, CA 03047
 Ph: 603.547.6697
 Fax: 603.547.6698
 genemitchell@tellink.net
 www.tensioncontrolbolting.com

TXI Chaparral Steel
Booth 422
 300 Ward Rd.
 Midlothian, TX 76065
 Ph: 972.779.3100
 Toll-Free: 800.527.7979
 Fax: 972.779.1236
 smurphy@txi.com
 www.txi.com

TXI Chaparral Steel is the second largest producer of wide-flange beams in the U.S.A. The company maintains a low-cost profile at its four rolling mills located in Midlothian TX and Petersburg VA. TXI Chaparral Steel recently implemented its FAST-FRAMESM frame-delivery system. A FAST-FRAMESM team consists of a structural engineer, a steel fabricator, a detailer and the mill. The engineer designs from available inventory in concert with the fabricator. Working together from the onset of project, teams have delivered frames 40% faster than by conventional methods.

Valmont Industries
Booth 467
 P.O. Box 358
 Valley, NE 68064
 Ph: 402.359.2201
 Toll-Free: 800.825.6668
 Fax: 402.359.4481
 www.valmont.com

Manufacturer of Custom HSS—Jumbo Twin Weld, square and rectangular HSS from 12" thru 48" in wall thickness of .312" thru 1.000", and lengths up to 55' long.

Vernon Tools
Booth 747
 503 Jones Rd.
 Oceanside, CA 92054-1217
 Ph: 760.433.5860
 Fax: 760.757.2233
 jdblackburn@vernontool.com
 www.vernontool.com

Vulcraft - Utah
Booth 201
 1875 W. Highway 13 S.
 P.O. Box 637
 Brigham City, UT 84302
 Ph: 435.734.9433
 Fax: 435.723.5423
 roy@vulcraft-ut.com
 www.vulcraft.com

Vulcraft continues to manufacture both steel joist and steel deck products.

Wheeling Corrugating Company
Booth 330
 1134 Market St.
 Wheeling, WV 26003
 Ph: 304.234.2300
 Toll-Free: 800.WCC.DECK
 Fax: 304.234.2330
 dunkintm@wpsc.com
 www.wheelingcorrugating.com



Wheeling Corrugating



It's Your Choice!

Modern Steel Construction is putting a new twist on its annual Hot Products awards: this year, attendees at the 2004 NASCC in Long Beach, CA will have a chance to view and rate products for the *MSC* Hot Products "People's Choice" Awards. Be on the lookout for participating exhibitors, who will display signs that say "Ask us about our *Modern Steel Construction* "People's Choice" Hot Product Entries!"

Each NASCC attendee will receive a "People's Choice" ballot that lists each exhibitor, booth number, and their product entries. Attendees will rate each product on a scale of one to 10. Traditional Hot Products categories will not be used for this competition.

Ballots will be collected in the exhibit hall at the AISC booth, and the results tabulated. Any product that receives, on average, a "scorching" rating (seven or higher) will receive an *MSC* Hot Product "People's Choice" Award. Any product that receives, on average, a "very hot" rating (five or more but less than seven) will receive an *MSC* Hot Product "People's Choice" Merit Award. Winning products will receive coverage in the August 2004 issue of *Modern Steel Construction*, along with our traditional Hot Products "Editors' Choice" Awards.

We will still offer our traditional Hot Products "Editors' Choice" Awards later this year, but don't miss your chance to cast your vote in the Hot Products "People's Choice" awards! Register today (www.aisc.org/nascc) to attend the NASCC (Long Beach,

Note: NASCC exhibitor information published in the March issue of *Modern Steel Construction* was current as of February 13, 2004. As of March 2, 2004, the following additional Exhibitors will be participating:

Exhibitor	Booth
Bull Moose Tube	349
Canam Steel Corporation	129
LTC, Inc.	615
QMC	312
SRS	234
TRC International	151
Verco	347