

**A.W. Hutchison & Associates LLC**

**Booth 434**  
 101 Marietta St NW - Ste 2300  
 Atlanta, GA 30303  
 Ph: 404.524.7707  
 Fax: 404.524.8520  
<http://www.awhutchison.com>

With offices in Atlanta, Los Angeles, and Detroit, AWH comprises an expert staff of construction professionals to provide project risk management, claims evaluation, project monitoring, and constructability analysis to owners, contractors, and construction litigators on major construction projects worldwide. Recognized internationally as a leader in construction management consulting, dispute resolution, and expert testimony, AWH possesses an extensive dossier of experience on over 1,000 projects, collectively valued at over \$40 billion.

**A-1 Detailing**

**Booth 232**  
 10 Pinder Rd  
 Millville, NB, Canada E6G 1W3  
 Ph: 506.575.1222  
 Fax: 506.575.1223  
<http://www.a1detail.com>

A-1 Detailing has been in the steel fabrication industry for over 25 years. We specialize in steel detailing complimented by in-house connection design. We have successfully completed jobs in the 700-1000 ton range in both Canada and the USA. A-1 Detailing uses Xsteel software for steel detailing.

**A-Plus Galvanizing, Inc.**

**Booth 438**  
 1100 N Ohio St  
 Salina, KS 67401  
 Ph: 785.820.9823  
 Fax: 785.820.9816  
<http://www.aplusgalv.com>



Oversized kettle dimensions of 82' long x 10' wide x 12' deep, A-Plus Galvanizing, Inc. is home of the "super kettle," the

world's largest hot-dip galvanizing kettle. Oversized structures such as an 88,000# tower anchor for a cable stayed bridge, an 82' x 10' smoke stack assembly, and 81' railroad bridge beams have been hot dipped galvanized in a single dip. Eighty acres of on-site storage and painting after galvanizing available.



Church Street South Extension Bridge  
 28 Ton Truss - 80 Bridge Beams

**A/D Fire Protection**

**Booth 131**  
 420 Tapscott Rd  
 Scarborough, ON, Canada M1B 1Y4  
 Ph: 416.292.2361  
 Toll-Free: 800.263.4087  
 Fax: 416.298.5887  
<http://www.adfire.com>

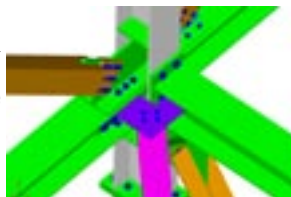
A/D Fire Protection Systems manufactures a diversified group of passive fire protection products for the building construction industry. Our products include a full range of sprayed fire resistive materials for structures steel and concrete, thin film intumescent coatings for structural steel, and fires topping products for the protection of openings where building services penetrate fire rated assemblies.

**AceCad Software Inc.**

**Booth 424**  
 825 Springdale Dr  
 Exton, PA 19341  
 Ph: 610.280.9840  
 Fax: 610.280.9841  
<http://www.strucad.com>



AceCad Software Inc. is a leading supplier of software solutions to the international structural steel industry.



AceCad develops a range of 3D Detailing, Analysis and MRP software packages. AceCad products produce fully automated fabrication, erection, and assembly drawings, as well as professional estimates and real-time production and inventory control.

**Albina Pipe Bending Co., Inc**

**Booth 115**  
 12080 SW Myslony St  
 Tualatin, OR 97062  
 Ph: 503.692.6010  
 Toll-Free: 866.252.4628  
 Fax: 503.692.6020  
<http://www.albinapipebending.com>

Roll, compression, hot and cold bending, spiraling, plate, and fabricated products since 1939. Union shop with experience in curving AESS wide flange beams, tubing, and all other structural members both the "easy way" and the "hard way." Complete suite of bending machines capable of bending wide flange up to 36" as well as pipe up to 26" in diameter. Leader in bending canopies, stadium roof structures, archways, bridges, and spiraled stringers and handrails.

**Allied Machine and Engineering Corp.**

**Booth 614**  
 120 Deeds Dr  
 Dover, OH 44622  
 Ph: 330.343.4283  
 Toll-Free: 800.321.5537  
 Fax: 330.602.3400  
<http://www.alliedmachine.com>

Allied Machine & Engineering Corp.'s solution for hole making in structural steel materials is now available as a standard offering. Designed specifically for use on structural steel materials, this patent-pending system delivers outstanding performance and durability. Tian insert coating allows for increased tool life and better heat resistance. T-A ® Thin Wall geometry insert is ideal for materials up to and including 7/16" thick, while the T-A ® Notch Point geometry insert is designed for material greater than 7/16" thick.

**Amercoat Canada - licensee of Ameron Protective Coatings**

**Booth 612**  
 1174 S Service Rd W  
 Oakville, ON, Canada L6L 5T7  
 Ph: 905.847.1500  
 Toll-Free: 800.387.7151  
 Fax: 905.847.5899  
<http://www.amercoatcanada.com>

**American Galvanizers Association**

**Booth 631**  
 6881 S Holly Circle - Ste 108  
 Centennial, CO 80112  
 Ph: 720.554.0900  
 Toll-Free: 800.468.7732  
 Fax: 720.554.0909  
<http://www.galvanizeit.org>

Serving the needs of specifiers, architects, engineers, contractors, and fabricators throughout North America since 1935, the American Galvanizers Association (AGA) provides information on the most innovative applications and state-of-the-art technological developments in hot-dip galvanizing for corrosion protection. Created to educate and train in the specification and use of hot-dip galvanized steel, the AGA maintains a large technical library, distributes numerous industry publications, offers free, accredited educational seminars, and provides free technical support to the specifying community.

**American Institute of Steel Construction, Inc.**

**Booth 925**  
 One E Wacker Dr - Ste 3100  
 Chicago, IL 60601  
 Ph: 312.670.2400  
 Fax: 312.670.4651  
<http://www.aisc.org>

Learn about AISC's products and solutions, including information about AISC's ePubs program. Chat with AISC staff and meet AISC's Steel Solutions Center team.



Montréal, Québec – Canada

April 6–9

## American Punch Company

**Booth 732**

27101 Tungsten Rd  
Cleveland, OH 44132-2940  
Toll-Free: 800.243.1492  
Fax: 800.261.6270  
<http://www.americanpunchco.com>

American Punch Co. has been supplying punches, dies, and shear blades to the steel fabricating industry since 1990. Our standard line of tooling fits all ironworkers, angle and beam-lines. Stop by our booth in Montreal and ask how American Punch can save you money and receive a free 6' Zippo tape measure while supplies last.

## American Welding Society

**Booth 341**

559 NW LeJuene Rd  
Miami, FL 33126  
Ph: 305.443.9353  
Toll-Free: 800.443.9353  
Fax: 305.443.7559  
<http://www.aws.org>

The American Welding Society (AWS) is the world's largest member organization devoted to advancing the science, technology, and application of welding. AWS activities include development of technical standards, certification of welding personnel, a major annual trade show, a variety of welding-related conferences and seminars, and publication of the award-winning monthly magazine, *Welding Journal*.

## Applied Bolting Technology

**Booth 430**

1413 Rockingham Rd  
Bellows Falls, VT 05101  
Ph: 802.460.3100  
Toll-Free: 800.522.1999  
Fax: 802.460.3104  
<http://www.appliedbolting.com>



Engineers love DTIs! Erectors love Squirters! Winner of AISC's *Modern Steel Construction* magazine's "People's Choice Hot Product Award" with a rating of SCORCHING. Squirter DTIs, made to ASTM F959,

enable installers and inspectors to verify minimum required bolt tension without feeler gages.

## Arcelor International America, Inc.

**Booth 512**

350 Hudson St  
New York, NY 10014  
Ph: 212.520.7500  
Fax: 212.520.7702  
<http://www.arcelor.com>

Arcelor (FKA Tradeared) is a leading supplier of structural shapes and plates to America, and is the world's largest steel maker. Widest range of W-shapes A913/50, A913/65, A572/50, A992. From W4x13 to W44x335 including jumbos up to W14x730, W36x650, and W40x593. Large range of L, MC, MC, and standard shapes (thru S24). Largest range of sheet-piles (AZ, AU). Special sections. Entire range of metric (European) shapes.

## B. D. Structural Design, Inc.

**Booth 224**

85, J-Armand Bombardier - Ste 200  
Boucherville, QC, Canada J4B 8P1  
Ph: 450.641.1434  
Fax: 450.449.1772  
<http://www.bdsd.com>

B.D. Structural Design has been a leading structural steel detailing business for over 30 years and was the first drafting office to be certified ISO 9001-2000. We can manage single projects up to 10,000 tons and more with an annual capacity of over 30,000 tons. Our services cover the production of shop drawings, erection plans, anchor bolts layout, connection sketches, design calculations, and much more. We are currently using 40 SDS/2 licenses.

## Barnhart Crane and Rigging Co.

**Booth 535**

1701 Dunn Ave  
Memphis, TN 38106  
Ph: 251.654.0541  
Toll-Free: 800.587.3249  
Fax: 251.654.0547  
<http://www.barnhartcrane.com>

Barnhart has 14 locations throughout the United States, Sao Paulo, Brazil, and the United Kingdom and offers not only crane service up to 1,800 tons, but also specializes in utilizing cutting-edge technology to provide innovative, engineered solutions within the heavy structural and bridge building, nuclear, power maintenance, alternative energy, and petrochemical markets.

## BDS Steel Detailers

**Booth 417**

225 E First St - Ste 108  
Mesa, AZ 85201  
Ph: 480.615.1700  
Toll-Free: 888.838.1540  
Fax: 480.615.1717  
<http://www.bdsglobal.com>

BDS Steel Detailers is the largest XSteel user in the world with 135 licenses. With six offices strategically located around the world, BDS can service your needs 24 hours a day. We detail all types of projects of all sizes, from 100 tons to 50,000 tons.

## Bentley Systems, Inc.

**Booth 521**

685 Stockton Dr  
Exton, PA 19341  
Ph: 610.458.5000  
Fax: 610.458.1060  
<http://www.bentley.com>

## Brown Consulting Services, Ltd.

**Booth 531**

40 FM 1960 W - #442  
Houston, TX 77090  
Ph: 281.260.9749  
Toll-Free: 888.728.2272  
Fax: 281.260.9771  
<http://www.steelconnectiondesign.com>

A professional engineering firm offering services nationwide. We offer design services for structural steel connections; stairs and railing; scaffolding, formwork, and other temporary structures; along with full design-build services. We offer a competitive fixed price with quick turnaround and well-documented calculations. We design in ASD, LRFD, UBC, IBC, FEMA 350, SEAC, or other required design codes. We commonly provide our clients with design alternatives to make steel fabrication most efficient.

## BUG-O Systems

**Booth 331**

3001 W Carson St  
Pittsburgh, PA 15204  
Ph: 412.331.1776  
Toll-Free: 800.245.3186  
Fax: 412.331.0383  
<http://www.bugo.com>

Bug-O Systems, manufacturer of welding and cutting automation, will display its newest innovations for increasing productivity. Beam-Bug is a portable oxy-fuel beam-cutting machine that can miter, bevel, and square cut angle, channel, and I-Beams. Programmable Shape Machine is a portable two axis programmable shape-burning machine used to cut shapes, slots, and cope structural steel. The Uni-Bug is an automatic welding or cutting tractor that can be used to split or weld beams.

## Bull Moose Tube Company

**Booth 432**

1819 Clarkson Rd - #100  
Chesterfield, MO 63017  
Ph: 636.537.2600  
Toll-Free: 800.325.4467  
Fax: 636.537.2881  
<http://www.bullmoosetube.com>

## Burlington Automation

**Booth 618**

5041 Fairview St  
Burlington, ON, Canada L7L 4W8  
Ph: 905.681.9622  
Fax: 905.333.1477  
<http://www.burlingtonautomation.com>  
BAC designs and builds manufacturing systems, including automatic CNC metal fabrication systems such as 5-axis plasma cutting machines, drill

lines, punch lines, machining centers, angle lines, and other fabrication machinery. Tube industry machinery includes multi-head saw lines, single head saw lines, deburr machines, tube washers, tube packaging systems, scraf blow-outs, and end facing machinery. Material handling includes CNC cranes for plates and long structural members, conveyors, cross transfers, and auto measuring systems.

## Canadian Institute of Steel Construction

**Booth 626**

**300-201 Consumers Rd  
Willowdale, ON, Canada M2J 4G8  
Ph: 416.491.4552  
Fax: 416.491.6461  
<http://www.cisc-cca.ca>**

CISC is a national industry organization representing the structural steel, open-web steel joist, and steel plate fabricating industries in Canada. Formed in 1930, CISC functions as a not-for-profit organization promoting the efficient and economical use of fabricated steel in construction through work on codes and standards through SCC, CSA, CCBFC, and ISO, as well as through technical literature, textbooks, design aids, delivery of educational courses, and support of research and educational activities of SSEF. CISC has four Regional Marketing Directors covering Atlantic, Québec, Ontario, and Western Region (Central, Alberta, British Columbia).

## Canadian Welding Bureau

**Booth 520**

**7250 W Credit Ave  
Mississauga, ON, Canada L5N 5N1  
Ph: 905.542.1312  
Toll-Free: 800.844.6790  
Fax: 905.542.1318  
<http://www.cwbweb.com>**

The Canadian Welding Bureau (CWB) is a certification organization accredited by the Standards Council of Canada. It is a division of the CWB Group, an independent, not-for-profit organization. The CWB administers various welding certification programs for welding operations, manufacturing systems, consumables, inspection organizations, and individuals. In addition to welding certification, the CWB, through its sister divisions, provides education, training, and ISO 9000 and ISO 14000 registration.

## The Canam Group/Canam Steel Corporation

**Booth 201**

**4010 Clay St  
Point of Rocks, MD 21777  
Ph: 301.874.5141  
Fax: 301.874.3357  
<http://www.canam.ws>**

Canam Group is a North American leader in the design and fabrication of building solutions, including steel joists, deck, and construction components; Hambro composite floor systems; and Murox/Expanspro systems, furnishing the walls and entire building envelope. Bridges built by structural, engineering, and detailing services from Technyx complete Ca-

nam's product solutions for construction. Engineering expertise gained from more than 40 years in the building business is Canam's specialty.

## Capital Safety Group Canada Ltd.

**Booth 537**

**260 Export Blvd  
Mississauga, ON, Canada L5S 1Y9  
Ph: 905.795.9333  
Toll-Free: 800.387.7484  
Fax: 905.795.8777  
<http://www.salagroup.com>**

## Cerbaco Ltd.

**Booth 523**

**809 Harrison St  
Frenchtown, NJ 08825  
Ph: 908.996.1333  
Fax: 908.996.0023  
<http://www.cerbaco.com>**

Cerbaco will provide samples from its line of 500+ configurations of non-metallic weld backings that permit finished quality, full-penetration welds from one side. For use with structural steel, shipbuilding, pipeline, pressure vessel, and tank manufacturing. The backings work with MIG, TIG, Stick Electrode, Sub Arc, and Flux core welding processes to weld carbon and alloy steel, stainless steel, non-ferrous metals, and aluminum.

## Chicago Metal Rolled Products

**Booth 513**

**3715 S Rockwell St  
Chicago, IL 60632  
Ph: 773.523.5757  
Toll-Free: 800.798.4504  
Fax: 773.650.1439  
<http://www.cmrp.com>**



with tangents; does off-axis and multi-axis bending; creates true, helical coils; and manufacturers plumb, circular stair stringers.

On the world's largest beam roller, Chicago Metal Rolled Products bends up to 44" x 285# beams both the "easy way" and the "hard way." On one of the world's largest section rolls, the company bends up to 20" diameter pipe and 20" x 12" tube. And with 60 rolling machines and 96 years of experience, Chicago Metal provides 2-3 day delivery of quality, curved structural steel maintaining a 98% on-time delivery record for the last seven years. The company also regularly bends steel into ellipses; rolls arch-pro systems, furnishing the walls and entire building envelope. Bridges built by structural, engineering, and detailing services from Technyx complete Ca-

## CIS/2 Interactive!

**Booth 925**

**One E Wacker Dr - Ste 3100  
Chicago, IL 60601  
Ph: 312.670.5431  
Fax: 312.670.5403  
<http://www.aisc.org/edi.html>**

## CivilDesign, Inc. Engineering Software

**Booth 517**

**61 St Charles St W - Ste 50  
Longueuil, QC, Canada J4H 1C5  
Ph: 450.674.0657  
Toll-Free: 800.724.5678  
Fax: 450.674.0665  
<http://www.civild.com>**

Logiciels d'ingénierie

**CivilDesign Inc.**

Engineering Software



VisualDesign is a complete structural analysis and design solution. Runs 13 modules on the same platform. Verification and design for structural and cold-formed steel. Complete steel shapes database. Load combination wizards. Detailed calculation briefs. Composite beams construction stages. Ductile bracing systems (US and CAN codes). Pall friction dampers, industrial racking generator. Also: dynamic spectral, time history, NL time history, moving loads, tower design, RC design, prestressed concrete, timber, bridges, abutments, piers, culverts, foundations.

## Cleveland City Forge

**Booth 539**

**46950 State Rte 18 W  
Wellington, OH 44090  
Toll-Free: 800.431.4350  
Fax: 440.647.4185  
<http://www.clevelandcityforge.com>**

Celebrating our 140th year in business. Cleveland City Forge manufactures devises, turnbuckles, turnbuckle assemblies, threaded rod, adjustable yokes, eye nuts, eyebolts, and rod ends.

Montréal, Québec – Canada

April 6–9

## Comeq

**Booth 917**  
PO Box 207  
White Marsh, MD 21162  
Ph: 410.933.8500  
Fax: 410.933.1600  
<http://www.comeq.com>

Comeq, the exclusive North American Distributor of world-renowned metal fabricating machinery. Comeq has been in business for 75+ years with long-term relationships with suppliers such as Geka Ironworkers from Spain and Roundo bending rolls from Sweden. Operating from a 50,000 sq. ft. facility, which includes a 5,000 sq. ft. showroom and parts, service, seminar, and office spaces.

## Computers and Structures, Inc.

**Booth 219**  
1995 University Ave - Ste 540  
Berkeley, CA 94704  
Ph: 510.845.2177  
Fax: 510.845.4096  
<http://www.csiberkeley.com>

Computers and Structures, Inc. specializes in structural and earthquake engineering software. The products offered by CSI (SAP2000, ETABS, and SAFE) cover a wide range of structural applications from high-rise buildings to multi-use, one- and two-story structures (industrial structures, hospitals) and bridges (suspension and cable stayed bridges, multi-span bridges), to transmission towers.

## Controlled Automation, Inc.

**Booth 611**  
PO Box 888  
Bryant, AR 72089  
Ph: 501.557.5109  
Fax: 501.557.5618  
<http://www.controlledautomation.com>



Controlled Automation, Inc. was established in 1986 and is a manufacturer of plate burning and punching machines, angle punch lines, beam punch lines, drill lines, and material handling systems. All new machines are manufactured in our shops in Bryant, AR. We also have one of the largest rebuild and retrofit shops in the country and offer packages for angle lines, beam lines, drill lines, and burning tables.

## CSI - Metal Dek Group™

**Booth 319**  
650 Rosewood Dr  
Columbia, SC 29201  
Ph: 803.771.7920  
Toll-Free: 800.554.5421  
Fax: 803.799.6811  
<http://www.csisteel.com>

With 50 years of service to the construction industry, the CSI - Metal Dek Group™ offers one of the most complete lines of architectural and structural roof, floor, and form decks. Our specialty deck product lines include Versa-Dek® and Deep-Dek™ for your flooring and roofing needs. We also offer specialty options that include coil-coating systems, cellular, and acoustic capabilities. Our design team works with you as value engineers, ensuring you get exactly what you need on time and within budget.

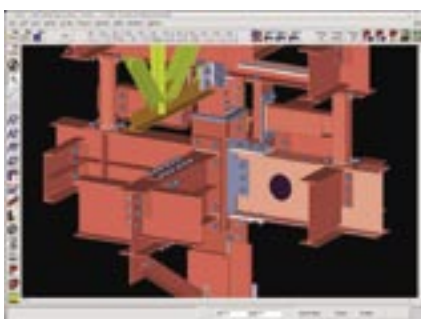
## Daito USA, Inc.

**Booth 907**  
1470 Elmhurst Rd  
Elk Grove Village, IL 60007  
Ph: 847.437.6788  
Fax: 847.437.6789  
<http://www.peerlessusa.com>

Daito is known for their award-winning engineering, uncompromising commitment to quality, and superior customer service. We offer a full line of machines for small, medium, and large plants. The world's finest CNC drilling machines for structural beams, band saw machines, and coping machines for structural steel fabricators are Daito machines.

## Design Data

**Booth 301**  
1501 Old Cheney Rd  
Lincoln, NE 68512  
Ph: 402.441.4000  
Toll-Free: 800.443.0782  
Fax: 402.441.4045  
<http://www.dsndata.com>



Design Data's SDS/2 is a three-dimensional computer modeling software product designed for the structural steel industry. The user creates a 3D model of a structure which is used to automatically design members and member end connections, produce shop drawings, order material, create CNC files for

automated fabrication, and share data with other software products. SDS/2 allows steel detailers, fabricators, engineers, and erectors to access the same 3D model from anywhere in the world simultaneously.

## DetailCad

**Booth 534**  
PO Box 2008  
Whitefish, MT 59937  
Ph: 406.862.7906  
<http://www.detailcad.com>

DetailCAD® is an automated program working inside AutoCAD® that produces shop details with minimum input and enhancement. Shop details including beams, columns, bracing, stairs, HR, and welded frames can be produced directly from framing-plan or piece-by-piece input. Anchor-bolt plans, erection plans, evaluations, and an advance bill table can be produced from plan-input methods. Plan input is done with dialog boxes by inputting grid locations, adding columns to grid crossing, and then generating details or a 3D model.

## Detailed Design Drafting Services, Ltd.

**Booth 114**  
200-198 E Island Hwy - Ste 220  
Parksville, BC, Canada V9P 2G7  
Ph: 250.248.4871  
Fax: 250.248.4826  
<http://www.detaileddesign.com>

We are a structural steel detailing firm with a staff of 45. Our portfolio includes: George Bush Intercontinental Airport Central F.I.S. Building, University of Cincinnati MainStreet Recreation Center, GM Assembly Plant, and Moody Gardens Convention Center, as well as hospitals, refineries, and other commercial and industrial projects.

## Dowco Consultants Ltd.

**Booth 108**  
2433 Holdom Ave  
Burnaby, BC, Canada V5B 5A1  
Ph: 604.606.5802  
Toll-Free: 866.77.DOWCO  
Fax: 604.606.5818  
<http://www.dowco.com>

Dowco Consultants Ltd., founded in 1970, is the largest fully automated detailing company (utilizing Tekla Structures) in the world and is recognized as one of the leading steel detailers in North America, with a proven track record of exceptional detailing. Dowco's professional solutions are unrestricted by geographical boundaries, serving regional, national, and international markets.

## Elsevier Science, Inc.

**Booth 339**  
360 Park Ave S  
New York, NY 10010  
Ph: 212.989.5200  
Fax: 212.633.3990  
<http://www.elsevier.com>

## ESAB Welding and Cutting

**Booth 418**  
411 S Ebenezer Rd  
Florence, SC 29501  
Ph: 843.664.4433  
Toll-Free: 800.933.7070  
Fax: 843.677.5815  
<http://www.esabna.com>

## FabTrol Systems, Inc.

**Booth 501**  
132 E Broadway - Ste 636  
Eugene, OR 97401  
Ph: 541.485.4719  
Toll-Free: 888.FABTROL  
Fax: 541.485.4302  
<http://www.fabtrol.com>

Come see what's new in FabTrol MRP, our integrated estimating, material requirements planning, and production management software for steel fabricators. Key features include system-wide support for material on order, improved drawing management, modifiable nesting results, new exports for sharing accounting and production status data with other systems, optional support for Microsoft SQL Server, and more. Stop by and discover why over 800 companies in 18 countries trust FabTrol MRP: A better way to manage.

## Ficep Corporation

**Booth 725**  
2301 Industry Ct  
Forest Hill, MD 21050  
Ph: 410.588.5800  
Fax: 410.588.5900  
<http://www.ficepcorp.com>



Ficep Corporation will use this year's conference to introduce some of its latest product developments. Just during the past six months, Ficep has introduced eight new CNC lines for the fabrication of structural steel and plates. The new products that Ficep will introduce at this year's show will include the integrated processes of CNC sawing and drilling of structural steel. In addition, Ficep will also present some new developments in plate fabrication.



## Fisher & Ludlow

**Booth 624**  
8059 Dixie Hwy  
Florence, KY 41042  
Ph: 859.282.7767  
Toll-Free: 800.334.2047  
Fax: 859.282.7702  
<http://www.fisherludlow.com>

Fisher & Ludlow is a full line manufacturer of bar grating, safety grating, and expanded metal. Our seven North American locations provide rapid delivery of both standard panels and custom fabricated grating. Our product line includes bar grating, heavy duty grating, aluminum grating, fiberglass grating, Grip Span safety grating, Shur Grip safety grating, and expanded metal.

## Fraser Machinery

**Booth 335**  
12320 88th Ave  
Surry, BC, Canada V3W 3J6  
Ph: 604.590.3381  
Toll-Free: 888.590.3381  
Fax: 604.590.8040

## Geka, S.A. (Maquinaria Geke, S.A.)

**Booth 917**  
Apdo. 88—20100 Renteria  
Oiarzun (Gipuzkoa), Spain 20180  
Ph: 34.943.490.034  
Fax: 34.943.491.237  
<http://www.geka@geka.es>

On exhibit from the world's largest manufacturer of Ironworkers will be the Geka ALFA 500, an automatic line for processing flats and angles with a new productivity concept specifically aimed at the steel building fabricators; Hydracrop 110SD, a 110 ton Ironworker with Semi-PAXY, (X & Y-Axis) CNC position table with CNC touch-screen control; ALRS, an automatic feed line for processing line for flat bars; and Hydracrop 55, a 55 ton Ironworker. Geka is exclusively represented by Neiman Machinery Sales, Inc.

## Girder-Slab Technologies LLC

**Booth 442**  
PO Box 4126  
Cherry Hill, NJ 08034  
Ph: 856.424.7880  
Toll-Free: 888.478.1100  
Fax: 856.424.6880  
<http://www.girder-slab.com>

Multi-story residential design and construction are changing. Are you ready? The Girder-Slab® System consists of an interior girder known as an open web dissymmetric beam, or D-Beam®, that supports precast prestressed hollow core slabs on its bottom flange. Upon grouting, the Girder-Slab® System develops composite action enabling it to support residential live loads. This innovative approach to multistory residential construction offers flexible floor-to-floor heights while saving time and money and is available through your preferred steel contractors.

## Graitec, Inc.

**Booth 207**  
1695 Laval Blvd - Ste 200  
Laval, QC, Canada H7S-2M2  
Ph: 450.663.1363  
Toll-Free: 877.464.3366  
Fax: 450.663.6325  
<http://www.graitec.com>

Advance-Steel suite is software dedicated to design professionals, detailing offices, and steel construction companies that require a comprehensive and completely integrated package in AutoCAD®. Advance is an interactive and user-friendly system that automates the entire design process (detailing, erection drawings, various reports) and produces NC fabrication data directly in AutoCAD®. Advance is a high-end yet affordable solution that integrates well with engineering/joint design software.

## Greyhawk North America, LLC

**Booth 431**  
260 Crossways Park Dr  
Woodbury, NY 11797-2015  
Toll-Free: 888.280.HAWK  
Fax: 516.921.5649  
<http://www.greyhawk.com>

Greyhawk is the leading construction claims consultant in the steel industry. Our staff has been associated with well over 250,000 tons of steel on all types of projects: arenas, convention centers, high-rise buildings, industrial facilities, treatment plants, offshore and marine structures, manufacturing facilities, power plants, and more. Our professionals have also gained valuable, hands-on experience working as structural engineers, detailers, fabricators, and erectors. Find out how Greyhawk can help you. For more information, log on to <http://www.greyhawk.com> or call us at 888.280.HAWK (4295).

## Groupe Cadmax/Bocad Service Int'l

**Booth 625**  
8953 Robert-Armour - Ste 201  
Montreal, QC, Canada H1E 6J7  
Ph: 514.323.0713  
Toll-Free: 877.477.0713  
Fax: 514.323.9091  
<http://www.groupecadmax.com>

Design and complete detailing services in metal works: 2D and 3D drawings; miscellaneous metal detailing, structural detailing; ornamental metal (aluminum, stainless steel, cladding, etc.); stairs (service and monumental), guardrails, handrails, service platforms; retrofitting of small structures; refinery tank platforms and access ladders; equipment platform and engineer load and stress calculations (engineer stamping).

Montréal, Québec – Canada

April 6–9

**G.W.Y., Inc.**

**Booth 116**  
 217 Forest Rd  
 Greenfield, NH 03047  
 Ph: 603.547.3800  
 Toll-Free: 888.838.6500  
 Fax: 603.547.3801  
<http://www.gwyinc.com>

G.W.Y., Inc. is celebrating its 30th year of distributing installation tools for structural bolting. G.W.Y. has a full line of installation wrenches for both TC Bolts and standard structural bolts. Like the TC wrenches, G.W.Y.'s wrenches for heavy hex head structural bolts are constant speed electric tools that allow the bolts to be tightened from one side, by one person. In addition to new wrench sales, G.W.Y. also rents installation tools. G.W.Y.'s extensive spare parts inventory enables them to provide same day service for most tool repairs.

**H-Blanchette Ltd.**

**Booth 627**  
 500, rue Albert-Durant  
 Trois-Rivieres, QC, Canada G8Z 2M7  
 Ph: 819.374.1303  
 Fax: 819.374.3687  
<http://www.hblanchette.com>

Strong in its expertise in the field of wrought metals: ladders, stairs, handrails, and structural steel. For more than 80 years (five generations of existence) H-Blanchette Ltd. has developed an innovative concept of footbridges with fast assembly that are lighter and less expensive, including better times. H-Blanchette Ltd. is ISO 9000 accredited. It is also accredited by virtue of CSA Standards W47.1 and W47.2 of CWB. H-Blanchette Ltd. offers comprehensive engineering service, from design to manufacturing.

**Hache Technical Services Ltd.**

**Booth 127**  
 259, Boulevard St-Pierre Ouest  
 Carquet, N.B., Canada E1W 1A4  
 Ph: 506.727.7800  
 Fax: 506.727.7872  
<http://www.armand.hache@hachets.ca>

Hache Technical Services (HTS) Ltd. offers high quality structural and miscellaneous steel detailing services. Over the years, HTS has managed to build a solid reputation across Canada and the U.S. by providing quality workmanship, accuracy, and on-time delivery of shop details to our clients at competitive rates. Our detailing firm has experienced personnel using the 3D SDS/2 state-of-the-art software, and with capability to provide connection calculation, gather sheet, cut list, and more.

**Haydon Bolts, Inc.**

**Booth 519**  
 1181 Unity St  
 Philadelphia, PA 19124  
 Ph: 215.537.8700  
 Fax: 215.537.5569

**Hilti, Inc.**

**Booth 120**  
 5400 S 122nd East Ave  
 Tulsa, OK 74146  
 Ph: 918.252.6000  
 Fax: 918.252.6742  
[barthau@us.hilti.com](mailto:barthau@us.hilti.com)  
<http://www.us.hilti.com>

**Hodell-Natco Industries, Inc.**

**Booth 330**  
 1297 N Post Oak Blvd, Ste 100  
 Houston, TX 77055  
 Ph: 713.263.7600  
 Toll-Free: 800.275.2658  
 Fax: 713.263.7688  
<http://www.hodell-natco.com>

**Hougen Manufacturing, Inc.**

**Booth 530**  
 3001 Hougen Drive  
 Swartz Creek, MI 48473  
 Ph: 810.635.7111  
 Fax: 810.635.8277  
<http://www.hougen.com>

Hougen® portable magnetic drills and Rotabroach® annular cutters put superior hole making capabilities in your hands, whether on-site or in the shop. Fourteen models let you custom match capacity to your needs. Choose from the HMD150 that fits in tight quarters and drills up to 1-3/8" diameter through 1" deep; an economical HMD904 for drilling up to 1-1/2" diameter and 2" deep; and others that have the strength to produce 3-1/16" holes through 3" material.

**ICI Paints**

**Booth 532**  
 PO Box 141  
 Dyer, IN 46311  
 Ph: 219.865.0706  
 Fax: 219.864.4369  
<http://www.devoecoatings.com>

SpecDoctor.com—A dynamic coatings specification generation system tool for carbon steel and galvanized metal surfaces. Providing rapid dry/quick re-coat solutions for interior/exterior carbon steel and galvanized metals from our Devoe Coatings high-performance coatings brand of products.

**IMPACT (Ironworker Management Progressive Action Cooperative Trust)**

**Booth 527**  
 1750 New York Ave NW, West Lobby  
 Washington, DC 20006  
 Ph: 202.783.3998  
 Toll-Free: 800.545.4921  
 Fax: 202.393.1507  
<http://www.impact-net.org>

A Labor-Management Taft-Hartley Trust whose primary mission is to expand job opportunities for Union Ironworkers and their signatory contractors through progressive and innovative labor management cooperative programs.

**Industrial Galvanizers America, Inc.**

**Booth 140**  
 9520 E Broadway Ave  
 Tampa, FL 33619  
 Ph: 813.621.8990  
 Toll-Free: 800.776.4258  
 Fax: 813.622.8950  
<http://www.indgalv.net>

**Infasco**

**Booth 343**  
 700 Ouelette  
 Marieville, QC, Canada J3M 1P6  
 Ph: 450.658.87017  
 Fax: 450.447.0114  
<http://www.infasco.com>

Infasco's one million square foot plant in Marieville, Quebec is North America's largest fastener manufacturing facility. Absolute traceability and single source testing and documents are benefits of Infasco's vertically integrated company structure. Infasco operates an accredited ISO 17025 testing laboratory, and its structural product line includes A325 type 1 & 3, A490 as well as Tension Control and Tower Bolts. Infasco fasteners can be obtained across North America through a wide network of full-service stocking distributors.

**Infra-Metals Co.**

**Booth 500**  
 5208 24th Ave S  
 Tampa, FL 33619  
 Ph: 813.626.6005  
 Toll-Free: 800.693.1361  
 Fax: 813.626.8032  
<http://www.infra-metals.com>

**Integrated Structural Software Inc.**

**Booth 629**  
 334 Prospect Hill Road  
 Waltham, MA 02551  
 Ph: 650.520.9419  
 Toll-Free: 888.477.8491  
 Fax: 413.513.6309  
<http://www.robot-structures.com>



Integrated Structural Software Inc. is a member of the RoboBAT Group, which has been operating for 20 years in the civil engineering software field. RoboBAT develops interoperable and fully integrated

solutions: structural analysis and design software, drawing and 3D modeling software for steel, RC and timber structures.

## International Paint LLC

**Booth 421**  
6001 Antoine Dr  
Houston, TX 77091  
Ph: 713.682.1711  
Toll-Free: 800.525.6824  
Fax: 713.684.1514  
<http://www.international-pc.com>

International Paint LLC is the largest manufacturer of heavy duty, high performance protective coatings for steel and concrete, specializing in high corrosive environments. International Paint LLC offers a range of value added products for the construction and fabrication industries, as well as a range of solvent free tank linings for storage safety and environmental protection.

## J. B. Long, Inc.

**Booth 235**  
110 W Arch St - #214  
Fleetwood, PA 19522  
Ph: 610.944.8840  
Fax: 610.944.0789  
<http://www.jblong.com>

J.B. Long, Inc. has supplied structural steel and miscellaneous iron details to the fabrication industry for nearly 20 years. The firm is certified under the NISD Quality Procedures Program. Thirteen detailers of a staff of 23 are certified under the NISD Individual Detailer Certification program. Detailers primarily use Steel Logic (an AutoCAD-based detailing package) and Xsteel to create details. J.B. Long focuses on small commercial projects near 500 tons, while not precluding the occasional larger project.

## Jobber Instruments Calculator Company

**Booth 233**  
1211 Douglass Ln  
Sevierville, TN 37876  
Ph: 865.428.6517  
Toll-Free: 800.635.1339  
Fax: 865.453.0202  
<http://www.jobbercalculator.com>

Producer of special design construction math calculators and software products built especially to meet the needs of the steel industry. The Jobber 6 is the most advanced and easy to use calculator ever on the market. It works with any type of dimension (imperial, metric, etc.). It has special built-in features for automatically solving the most complex math problems. Construction related software for the PC and PDA are also illustrated and can be downloaded for our web site.

## Kubes Steel, Inc.

**Booth 600**  
930 Arvin Av  
Stoney Creek, ON, Canada L8E 5Y8  
Ph: 905.643.1229  
Toll-Free: 877.327.8357  
Fax: 905.643.4003  
<http://www.kubesteel.com>

As Canada's premier providers of structural, section rolling, forming, and prefabrication services, we currently offer Canada's largest multi-section roll-bending capacity. For large projects or small components, please call us first. We will make every effort to meet your needs and offer you a competitive edge.

## LeJeune Bolt Co.

**Booth 522**  
3500 W Hwy 13  
Burnsville, MN 55337  
Ph: 952.890.7700  
Fax: 952.890.3544  
<http://www.lejeunebolt.com>

LeJeune Bolt Company has been the leader in structural bolting and tension control fastening for nearly 30 years. Their reputation is built on quality products and unmatched customer service to the structural steel industry. Known as the largest stocking supplier of structural fasteners in the country, LeJeune has continued to expand its product offering, which includes tension control bolts, hex head structural bolts, A307, weld studs, mechanical and adhesives anchoring systems, threaded rod, tool sales, rental, and repair.

## The Lincoln Electric Company

**Booth 435**  
22801 St Clair Ave  
Cleveland, OH 44117  
Ph: 216.481.8100  
Toll-Free: 888.921.9353  
Fax: 216.486.1751  
<http://www.lincolnelectric.com>

Lincoln Electric's Invertec™ V450-PRO multi-process inverter power source offers plenty of welding power and control for challenging applications on thicker materials as well as high efficiency for low operating costs. For field welding, the compact and rugged LN-15 wire feeder features an impact-resistant case surrounded by a metal roll cage. Lincoln's booth will also feature Innershield® 232 and Outershield® 71 Elite cored welding wires designed and packaged to meet FEMA guidelines for seismic applications.

## Lindapter North America, Inc.

**Booth 113**  
3924A Varsity Dr  
Ann Arbor, MI 48108  
Toll-Free: 888.724.2323  
Fax: 734.677.2339  
<http://www.lindapterna.com>

## Lohr Structural Fasteners, Inc.

**Booth 313**  
2355 Wilson Rd  
Humble, TX 77396  
Ph: 281.446.6766  
Toll-Free: 800.782.4544  
Fax: 281.446.7805  
<http://www.lohrfasteners.com>

Visit our booth and see the all-new line of patented Lohr fasteners. See our Lohr SmartHex™TC & 1-1/8" A490 Thick SmartHex™TC,



combining structural integrity with the familiarity and versatility of a traditional hex. Our all-new Lohr A325 Hex Traceable (non TC) Hexhead Sets offers convenience, savings, and total traceability with our pre-assembled sets. With our exclusive Head Lot ID for Total Traceability, with Lohr's head-stamped Lot ID and single-sheet certification, you get incomparable traceability from the factory to the final installation. Just look for the motorcycle!



## LTC, Inc.

**Booth 241**  
PO Box 577  
La Crosse, WI 54602  
Ph: 608.784.2300  
Fax: 608.785.2003  
<http://www.ltcsteeldetailers.com>

LTC is a structural steel detailing company that provides exceptionally accurate shop drawings for commercial and industrial buildings. These drawings are provided for the steel fabrication industry, with realistic and timely schedules. Fabricators realize additional value as LTC's preparations generate conformity to each fabricator's shop standards and detailing styles.

## McCann Equipment Ltd.

**Booth 728**  
9501 Cote de Liesse  
Dorval, QC, Canada H9P 2N9  
Ph: 514.636.6344  
Fax: 514.636.0365  
<http://www.mccannequipment.com>

McCann Equipment Limited is an industrial torque tool "specialty distributor." "TONE" shear wrenches, "SR" wrenches, and "STC" wrenches for conventional structural fasteners, Skidmore Bolt Tension analyzers, dynamic impact wrenches, spline drive

Montréal, Québec – Canada

April 6–9

sockets, driry pins, bull pins, spud wrenches, Klein steel erector tooling, pneumatic and mechanical torque multipliers, dial torque wrenches, hydraulic bolting tools, and Stanley hydraulic tools for the construction industry. Sales, repairs, rentals, and calibration service available.

**Metal Perreault, Inc.**

**Booth 525**  
 167 Rue Armand Bombardier  
 Donvacorna, QC, Canada G3M 2X2  
 Ph: 418.285.4499  
 Fax: 418.285.4490  
<http://www.metalperreault.com>

**Mi-Jack, Inc.**

**Booth 616**  
 3111 W 167th St  
 Hazel Crest, IL 60429  
 Ph: 708.596.5200  
 Fax: 708.225.2312  
<http://www.mi-jack.com>

**Mobilis Systems, Inc.**

**Booth 436**  
 2 du Jardin - Ste 104  
 Pont-Rouge, QC, Canada G3H 3R7  
 Ph: 418.873.3878  
 Toll-Free: 866.618.3878  
 Fax: 418.873.3448  
<http://www.smsteel.com>

Estimation, cut list, and inventory management software designed specifically for the steel construction industry. For an effective way to step towards profitability, visit us at Booth 436 or visit our web site: <http://www.smsteel.com>. We are looking forward to seeing you at the show!

**National Institute of Steel Detailing, Inc.**

**Booth 337**  
 7700 Edgewater Dr - 670  
 Oakland, CA 94621-3022  
 Ph: 510.568.3741  
 Fax: 510.568.3781  
<http://www.nisd.org>

The National Institute of Steel Detailing (NISD) is an international association that advocates, promotes, and serves the interests of the steel detailing industry. The object of the institute's programs and documents is to improve detailers' knowledge, verify their skills, and qualify their ability to manage properly detailed projects, as well as opening a window to the world for its members.

**National Steel Bridge Alliance**

**Booth 730**  
 1 E Wacker Dr, Ste 3100  
 Chicago, IL 60601  
 Ph: 312.670.7012  
 Fax: 312.670.5403  
<http://www.nsbaweb.org>

The National Steel Bridge Alliance is organized and dedicated to better serve our customers and members with state-of-the-art design and construction of

steel bridges. We are a unified industry organization of businesses and agencies interested in the development, promotion, and construction of cost-effective steel bridges.

**Neiman Machinery Sales, Inc.**

**Booth 917**  
 395 Harry Walker Pkwy North  
 New Market, ON, Canada L3Y 7B3  
 Ph: 905.715.7776  
 Toll-Free: 800.898.4106  
 Fax: 905.715.7744  
<http://www.neimanmachinery.com>

Neiman Machinery is an exclusive Canadian distributor of fabricating machinery, specializing in Euromac, GEKA, Haeger, Luna, and Techno, which are some of the high-quality metal fabricator machinery the company represents. NMS is a full-service distributor offering a complete solution, including sales engineering and application studies, as well as service and parts. NMS is based on Newmarket, ON. For more information, visit their web site: <http://www.neimanmachinery.com>

**New England Steel Detailers Association/M.G. Kelly Detailing**

**Booth 238**  
 PO Box 551  
 East Lyme, CT 06333  
 Ph: 860.691.2229  
 Fax: 860.691.1052

**Nicholas J. Bouras, Inc.**

**Booth 325**  
 25 DeForest Ave  
 Summit, NJ 07902  
 Ph: 908.277.1617  
 Toll-Free: 800.631.1215  
 Fax: 908.277.1619  
<http://www.njb-united.com>

Nicholas J. Bouras, Inc. is the sales, engineering, and detailing subsidiary of Bouras Industries Inc., an integrated manufacturer of steel construction products with plants and sales offices in 16 states. United Steel Deck, Inc., Bouras's cold-formed products subsidiary, manufactures Steel Deck Institute-specified steel floor and roof decking, as well as metal siding and roofing products in three strategically located facilities, in South Plainfield, NJ, Peru, IL, and Rock Hill, SC. Bouras's joist-manufacturing subsidiary,



The New Columbia Joist Company, located in central Pennsylvania, manufactures Steel Joist Institute-specified K, LH, and DLH series joists, joist girders, and specialty trusses. ABA Trucking Corp. is Bouras's transportation services subsidiary, providing on-time deliveries of all of their products. Nicholas J. Bouras, Inc. and their manufacturing affiliates have been providing superior construction products, engineering, and customer service for over 40 years.

**Nitto Kohki USA, Inc.**

**Booth 606**  
 4525 Turnberry Dr  
 Hanover Park, IL 60133  
 Ph: 630.924.9393  
 Toll-Free: 800.323.8828  
 Fax: 630.924.0303  
<http://www.nittokohki.com>

Nitto Kohki is a leading manufacturer of automatic feed magnetic base drills that use self regulated feed systems to optimize cutting performance with a number of safety features. Using JetBroach carbide tipped annular cutters can significantly increase production while reducing labor hours and hazardous work. Please visit our booth for a complete demonstration. We also manufacture many other steel working tools including portable hydraulic punches, bevelers, and pneumatic and electric power tools.

**North American Galvanizing Company**

**Booth 507**  
 2250 E 73rd St - Ste 300  
 Tulsa, OK 74136  
 Ph: 918.488.9420  
 Fax: 918.488.8172  
<http://www.nagalv.com>



North American Galvanizing Company is the leader in providing Hot Dip Galvanizing and corrosion control solutions for all of your fabricated steel projects. We are one of the largest galvanizers in the country with up to 500,000 tons of annual capacity and a network of locations nationwide to serve your project needs and timetables. We offer the highest grade zinc in the industry, and our strict quality control standards and engineering expertise allow us to seamlessly integrate with your supply chain, eliminating the need to ship back to you for inspection. Our new Infrashield coating system provides an effective method for applying duplex coatings.





**Nucor Fastener - Indiana**  
**Booth 401**

6730 County Rd 60  
 PO Box 6100  
 St. Joe, IN 46785  
 Ph: 260.337.1626  
 Toll-Free: 800.955.6826  
 Fax: 260.337.1726  
<http://www.nucor-fastener.com>

Manufacturer of domestic steel hex head cap screws, build-to-print specials, steel hex structural bolts and nuts in both inch and metric sizes, and dome head tension control assemblies in various grades and finishes.

**Nucor-Yamato Steel Company**  
**Booth 401**

PO Box 1228  
 Blytheville, AR 72316  
 Ph: 870.762.5500  
 Toll-Free: 800.289.6977  
 Fax: 870.763.9107  
<http://www.nucoryamato.com>

Steel manufacturer of wide flange structural steel shapes, steel H-piling and sheet piling, angle, channel, miscellaneous channel, standard, and car building shapes. Grades include ASTM A36, ASTM A328, ASTM A572, ASTM A588, ASTM A690, ASTM A709, and ASTM A992.

**Ocean Machinery**  
**Booth 601**

3081 E Commercial Blvd  
 Ft. Lauderdale, FL 33308  
 Ph: 954.351.0899  
 Toll-Free: 800.286.3624  
 Fax: 954.351.9472  
<http://www.oceanmachinery.com>

Ocean Machinery will exhibit the Ocean Avenger beam-drill line. Taking up only about half the floor space required for conventional drill lines and costing less than half, the Avenger is capable of processing beams, angles, channels, tubes, and plates up to 40" wide. Built by Peddinghaus with Siemens control and components, the Avenger uses Peddimat software for integration with major detailing software. Since its introduction, the Avenger has been the top-selling beam line in the USA.

**Omnitech Associates**  
**Booth 419**

PO Box 20792  
 Oakland, CA 94620  
 Ph: 510.658.8328  
 Toll-Free: 888.8.DESCON  
 Fax: 510.595.0373  
<http://www.desconplus.com>

Omnitech Associates provides DesconWin and Descon Brace software for connection design using an ASD and LRFD approach. DesconWin designs shear and moment connections including beam-to-column flange, beam-to-column web, and beam-to-girder connections, beam and column splices, connections to HSS columns, and FEMA-350 connections. Descon Brace designs braced frame con-

nections including diagonal, chevron, K, and knee braces, and brace connections to column base. Both programs generate detailed calculation reports, drawings, and DXF files.

**Peddinghaus Corporation**  
**Booth 707**

300 N Washington Ave  
 Bradley, IL 60915  
 Ph: 815.937.3800  
 Fax: 815.937.4003  
<http://www.peddinghaus.com>



At NASCC '05, Peddinghaus Corporation, Bradley, IL will introduce new products for the value-minded structural steel fabricator. A newly designed band saw—engineered specifically for structural steel—will be exhibited for the first time. The patented design of the DGP series miter band saws reduces scrap remnants and eliminates chip contamination with a saw blade assembly that pivots from a sturdy frame. A new automated measuring system complements the system, complete with a CNC carbide-marking unit for fast identification of any section size.

**Piranha**  
**Booth 734**

4 John Fisher Ave  
 Pointe Claire, PQ, Canada H9R 5W4  
 Ph: 514.693.3666  
 Toll-Free: 800.361.4777  
 Fax: 514.693.9666  
<http://www.ianjones.com>

See a live demonstration of North America's most popular Ironworker—the Piranha P-50! From punching and bending, to shearing flat bar, round and square bar, and angle stock, to coping and notching, this machine does it all. With models from 35-140 tons, see which will best improve your shop!

**PPG Industries, Inc. High Performance Coatings**  
**Booth 514**

One PPG Place 37S  
 Pittsburgh, PA 15272  
 Ph: 412.434.4141  
 Toll-Free: 800.441.9696  
 Fax: 412.434.3991  
<http://www.ppghpc.com>

PPG High Performance Coatings, a leading supplier of fire protective coatings and industrial maintenance coatings, will highlight Pitt-Char XP intumescent fire protective epoxy coating and Firetex thin film fire protective coatings. These products are fully tested by Underwriters Laboratories and are suitable for a variety of fire scenarios.

**Prothious Engineering Services**  
**Booth 234**

1839 Knoll Dr  
 Ventura, CA 93003  
 Ph: 310.890.7284  
 Fax: 775.796.3404  
<http://www.prothious.com>

Prothious provides steel detailing services to fabricators around the world. We currently have over 10 detailers with BS Engineering degrees and run three shifts. As a result, we can turn around large projects in less than half the time and for half the cost of some other firms. Please visit with us and learn how we help our clients be more profitable by winning more business and by reducing their detailing and estimating costs.

**Quality Management Company, LLC**  
**Booth 925**

1 E Wacker Dr, Ste 3100  
 Chicago, IL 60601  
 Ph: 312.670.7520  
 Fax: 312.670.9030  
<http://www.aisc.org/quality.html>



Quality Management Company provides independent, quality audits for the American Institute of Steel Construction's Certification Program. With experience in fabrication and/or erection, QMC auditors conduct rigorous examinations to evaluate a company's quality management system (rather than the specific product). This process provides specifying engineers with the assurance that an AISC Certified fabricator or erector encompasses the proper procedures, personnel, organization, experience, knowledge, equipment, capability, and commitment needed to successfully fabricate or erect their project.

**Quindata**  
**Booth 313**

Dr. Torres Boogn #805, Providencia  
 Santiago, Chile  
 Ph: 562.223.6828  
 Fax: 562.205.5641  
<http://www.quindata.cl>

Steel detailing services for industrial and commercial projects.

Montréal, Québec – Canada

April 6–9

## The “Quebec Connection”

**Booth 225**

**127 Cremazie West**

**Montreal, QC, Canada H2N 1L6**

**Ph: 450.688.7336**

**Toll-Free: 866.677.6161**

**http://www.quebecconnection.com**

The power of 100 detailers, using 100% 3D modeling under SDS 2 and Xsteel and expert management by “old school veterans.” Guarantees accuracy, on-time deliveries, and efficient details because we “know” steel the way North Americans like it! We can handle any size/type job. Maximize your profit listing the “experts”—meet them at booth 225.



## RAM International

**Booth 307**

**2744 Loker Ave W**

**Carlsbad, CA 92008**

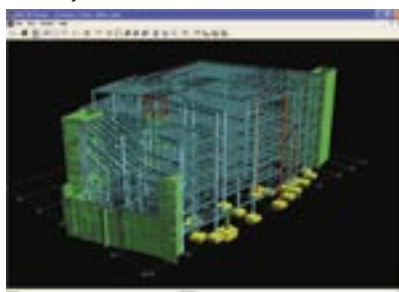
**Ph: 760.431.3610**

**Toll-Free: 800.726.7789**

**Fax: 760.431.5214**

**http://www.ramint.com**

RAM International provides totally integrated productivity solutions for the structural design office, including the RAM Structural System for building analysis and design, RAM CADstudio construction document management system for fully integrated design and drafting, RAM Advance for general purpose analysis and design—now includes utility tools such as retaining wall and continuous beam design, RAM Perform for nonlinear pushover and blast analysis, and RAM Connection for fully integrated steel connection design—with new Gusset Plate feature coming soon! Stop by and see how these tools can increase your productivity to a whole new level.



## Real Technology, LLC

**Booth 231**

**5850 San Felipe - #500**

**Houston, TX 77057**

**Ph: 832.251.9400**

**Fax: 832.201.0396**

**http://www.realtechcad.net**

## Research Engineers International

**Booth 425**

**22700 Savi Ranch Pkwy**

**Yorba Linda, CA 92887**

**Ph: 714.974.2500**

**Toll-Free: 800.367.7373**

**Fax: 714.974.4771**

**http://www.reiworld.com**

# STAAD.Pro 2005

Providing Structural Analysis and Design software solutions for over 22 years. Trusted by 19,000 engineering firms in over 85 countries. Implemented by 46 of ENR Top 50 Engineering Firms. Implemented by 47 of 50 US State DOTs. 7 of 10 top engineering university standardized on STAAD.Pro. First to bring you interoperability. First to bring you open architecture. First to bring you over 21 International Design Codes. First to integrate your entire engineering design chain. Call now to learn about our corporate licensing program!



## Risa Technologies

**Booth 212**

**26632 Towne Center Dr - Ste 210**

**Foothill Ranch, CA 92610**

**Ph: 949.951.5815**

**Toll-Free: 800.332.RISA**

**Fax: 949.951.5848**

**http://www.risatech.com**

RISAFloor is the only floor software that integrates with a general analysis package—RISA-3D. Designing both the gravity and lateral systems on one model, you can add anything, anywhere, including moving loads, one-way members and springs, tapered wide flanges, and plate/shell components. RISA-3D is a productive, time-tested general analysis and design program with total integration for small and large projects. RISASection, RISABase, and RISAFoot provide biaxial analysis of custom sections, footings, or base plates. RISAMasonry designs masonry walls, columns, and beams (lintels) to the latest codes.

## ROUND0 AB

**Booth 917**

**PO Box 171**

**Hissleholm, Sweden SE-281 22**

**Ph: 46.0.451.42200**

**Fax: 46.0.451.82404**

**http://www.roundo.se**

Since 1964, Roundo has been engineering machines for bending plates and sections for customers around the world. With the largest range of standard

machines and the ability to tailor machines to meet their customers' requirements, Roundo has become the world's leading supplier of bending rolls. To date, Roundo has supplied over 15,000 machines to satisfied customers around the world. For all of your rolling needs, your best choice is Roundo!

## SAFI Quality Software, Inc.

**Booth 333**

**3393 Chemin Sainte-Foy**

**Ste-Foy, QC, Canada G1X 1S7**

**Ph: 418.654.9454**

**Toll-Free: 800.810.9454**

**Fax: 418.653.9475**

**http://www.safi.com**

Virtual Steel Buildings™. Integrated technology for estimation, design, drafting, and fabrication of steel structures and buildings.



## SDS/2 User Group Zone Quebec

**Booth 125**

**5 Place Ville Marie**

**Montreal, QC, Canada H3B 2Z2**

**Ph: 514.861.0583**

**Fax: 514.397.1651**

## Sen Consulting Corp.

**Booth 236**

**150 Old Country Rd - Ste 206**

**Mineola, NY 11501**

**Ph: 516.248.9501**

**Fax: 516.908.7845**

**http://www.sen-group.com**

Sen Consulting Corp. is engaged in architecture, engineering, and CAD activities including steel and rebar shop drawings, as-built drawings, and connection designs in order to help the fabricator get all his CAD requirements under one roof. We specialize in residential, commercial building, industrial structures, staircase, railings, and miscellaneous items. The company also helps its customers by doing material takeoff for their bidding purpose. The company has five years of experience and uses AutoCAD and Xsteel.

April 6-9

Montréal, Québec - Canada

## SFS Intec, Inc.

**Booth 132**  
 Spring St & Van Reed Rd  
 PO Box 6326  
 Reading, PA 19610  
 Ph: 610.376.5751  
 Toll-Free: 800.234.4533  
 Fax: 610.376.0932  
<http://www.sfsintec.com>

## Sherwin-Williams

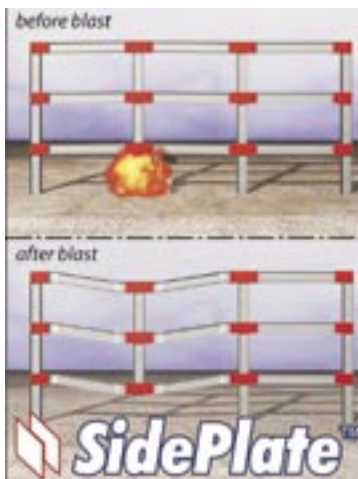
**Booth 104**  
 101 Prospect Ave  
 Cleveland, OH 44115  
 Toll-Free: 800.524.5979  
 Fax: 440.826.1989  
<http://www.sherwin-williams.com>

You get more per gallon from Sherwin-Williams. More technical expertise. More services to help professionals like you increase your productivity, protect your assets, and improve your business. We offer the industry's broadest range of high-performance coatings and application equipment, an expert staff of coatings specialists, and the industry's largest distribution network. Our experienced service and technology teams offer specification advice, color consulting, and on-site assistance.

## SidePlate Systems, Inc.

**Booth 409**  
 23422 Mill Creek Dr  
 Laguna Hills, CA 92653  
 Ph: 949.305.7889  
 Toll-Free: 800.475.2077  
 Fax: 949.305.6395  
<http://www.sideplate.com>

Let SidePlate Systems help you respond to today's multi-hazard design challenges at reduced construction costs with SidePlate™ steel frame connection technology. A single structural framing system for wind and earthquake resistance; blast and impact hardening; fire attack; and progressive collapse mitigation. Fully compliant with current U.S. Government Progressive Collapse Design Standards: discrete beam-to-beam continuity; connection resilience; connection redundancy; proven connection rotational capacity. Unlimited prequalification



of beam and column sizes, including deep columns ICC-ES Legacy Report ER-5366.

## SIR

**Booth 230**  
 1155 Rene Levesque W  
 Montreal, QC, Canada H3B 2K4  
 Ph: 514.990.1996

## SMI Steel Products/SMI Joist

**Booth 312**  
 2305 Ridge Rd - Ste 202  
 Rockwall, TX 75087  
 Ph: 972.772.0769  
 Fax: 972.772.0882  
<http://www.smisteelproducts.com>



SMI Steel Products is a manufacturer of SmartBeams®. SmartBeam® is a structural steel beam ideally suited for composite floor construction. SMI Joist is a leading producer of open-web steel joists and girders.

## SOFTEK Services Ltd.

**Booth 518**  
 #275-13500 Maycrest Wy  
 Richmond, BC, Canada V6V 2N8  
 Ph: 604.273.7737  
 Fax: 604.273.7731  
<http://www.csc-softek.com>

S-FRAME® and P-FRAME®: Industry leading 3D and 2D structural modeling and analysis software. Features a state-of-the-art graphical interface, simple to advanced analysis, finite element modeling, integrated steelwork design, and links to drafting software. S-STEEL™ - S-Frame/P-Frame integrated steel member design with automated optimal design and code-check to multiple codes. TEDDS® - Unique Microsoft® Word integrated calculation pad includes an indispensable collection of structural engineering calculation modules, tools,



and data plus integration with S-Frame and S-Steel for report compilation.

## SSDA

**Booth 134**  
 1841 Buchanan St  
 Phoenix, AZ 85007  
 Ph: 602.452.4467  
 Fax: 602.744.0309  
<http://www.ssda.com>

## SSDCP, Inc.

**Booth 533**  
 1923 - B South Blvd  
 Charlotte, NC 28203  
 Ph: 704.370.0840  
 Fax: 704.358.1801  
<http://www.ssdcp.com>



SSDCP is the most extensive set of detailing programs for AutoCAD you can get. Over 180 automated programs written by a steel detailer with over 40 years of experience. SSDCP programs are parametric - meaning they draw the details based on dimensions you enter - for structural and miscellaneous. SSDCP shows you a picture of what you're detailing on the screen, and asks you to enter dimensions that match the picture. It's quick and easy! Check us out in Montreal.

## St. Louis Screw & Bolt Co.

**Booth 516**  
 6900 N Broadway  
 St. Louis, MO 63147  
 Ph: 314.389.7500  
 Toll-Free: 800.237.7059  
 Fax: 314.389.7510  
<http://www.stlouisscrewbolt.com>



St. Louis Screw & Bolt manufactures and distributes all types of structural fasteners including A325-1, A325-3, A490-1, A490-3, A449, A354. They also carry a full line of TC Bolts in F1554 (A325) and A490. St. Louis offers products plain, hot-dip galvanized, mechanically galvanized, and in weathering steel. Size ranges from 1/2" to 4" diameter in any length range. Also supplies anchor rods in grades 36, 55, and 105, and A449 or stainless steels. St. Louis carries a full line of tools for both hex structural bolt and TC bolt installation. An in-house lab is certified by A2LA and is FQA compliant. All products are melted and manufactured in the USA. Products can be supplied to all state DOTs and are Cal-Trans approved. In-house ro-cap tests also are performed.

Montréal, Québec – Canada

April 6–9

## SteelCad Consulting Corporation

**Booth 423**  
 110 Timberlachen Cir - Ste 1000  
 Lake Mary, FL 32746  
 Toll-Free: 800.456.7875  
 Fax: 800.456.7875  
<http://www.steelcad.com>

## Steel Erectors Association of America

**Booth 138**  
 2216 W Meadowview Rd - Ste 115  
 Greensboro, NC 27407  
 Ph: 336.294.8880  
 Fax: 413.208.6936  
<http://www.seaa.net>

The Steel Erectors Association of America (SEAA) is dedicated to advancing the common interests and needs of all engaged in building with steel. The association's objective in achieving this goal includes the promotion of safety, education, and training programs for steel erector trades, development and promotion of standards, and cooperation with others in activities that impact the commercial construction business.

## Steel Founders' Society of America

**Booth 137**  
 780 McArdle Dr - Unit G  
 Crystal Lake, IL 60014  
 Ph: 815.455.8240  
 Fax: 815.455.8241  
<http://www.sfsa.org>

Steel Founders' Society of America (SFSA) is a not-for-profit trade association whose mission is to promote and develop steel castings. SFSA's membership is limited to steel casting producers. We strive to serve by developing new technology, exchanging technical and operating experience, and expanding the steel casting marketplace.

## Steel Joist Institute

**Booth 633**  
 3127 10th Ave N Ext  
 Myrtle Beach, SC 29577  
 Ph: 843.626.1995  
 Fax: 843.626.5565  
<http://www.steeljoist.org>

The Steel Joist Institute is a not-for-profit organization composed of steel joist manufacturers, utilizing professional engineering staffs to set and maintain the standards for the industry. These standards include specifications and load and weight tables, as well as a recommended code of standard practice. The Institute also invests in ongoing research related to steel joists and offers a complete library of publications and other training and research aids to include periodic seminars for CEU credit.

## Steel Projects

**Booth 524**  
 1 Rue Port Au Prince  
 Vienne, France 38200  
 Ph: 33.4.74.31.17.30  
 Fax: 33.4.74.78.04.10  
<http://www.steel-projects.fr>



Steel Projects is always concerned with bringing the best solution to customers and has developed a package line with the following targets: maximizing information flow with minimum input; having constant graphic monitoring in real time; ensuring the biggest interactivity; and the ability to customize our integrated system to your way of working.

## Steel Solutions Center

**Booth 925**  
 1 E Wacker Dr, Ste 3100  
 Chicago, IL 60601  
 Ph: 312.670.2400  
 Fax: 312.670.4651  
<http://www.aisc.org>



Questions about bolting? Want to know the latest developments in fire engineering? Technical question or innovative idea? The Steel Solutions Center is here to listen and help. From parking structures to high-rise offices, let AISC's Steel Solutions Center take you "outside the box" on your next project.

## Strand7 Software

**Booth 133**  
 541 Kent St - Ste 1 Level 7  
 Sydney, NSW, Australia 2000  
 Ph: 61.2.9264.2977  
 Fax: 61.2.9264.2066  
<http://www.strand7.com>

## StrucSoft Solutions

**Booth 506**  
 5375 Pare St  
 Montreal, QC, Canada H4P 1P7  
 Ph: 514.341.2028  
 Fax: 514.341.8856  
<http://www.strucsoftsolutions.com>

ProSteel 3D is a steel construction/design tool used by architects, engineering consultants, contractors, steel detailers, and fab shops. Uses AutoCad, ADT, ABS, or Inventor as a platform. Generates: BOM, 2D shop drawings, NC output; seamless bidirectional interface with popular structural analysis software; 3D parametric stairs, handrails, ladders, catwalks, platforms; open architecture. Applicable to industrial/commercial structures, for conveyors, bridges, road signs, plate work, towers, and offshore jackets, etc. You design it... ProSteel can model it.

## Structural Desktop, Inc.

**Booth 440**  
 PO Box 6400  
 Van Buren, AR 72956  
 Ph: 479.471.5227  
 Fax: 479.471.5225  
<http://www.structuraldesktop.com>

Structural desktop serves structural engineers by providing AutoCAD-based methods for analytical programs and converts analytical files into intelligent structural objects. It uses the information created in the analytical/design phase and eliminates the manual transfer or design information to a drawing. It creates design files from DXF or DWG files, converts design files into a model, automates drawings in 2D or 3D, and provides true-length material take-off.

## Structural Engineer Magazine

**Booth 433**  
 1 IBM Plaza - 33 N Wabash - Ste 3201  
 Chicago, IL 60611  
 Ph: 312.628.5870  
 Fax: 312.628.5878  
<http://www.gostructural.com>

*Structural Engineer* magazine is the leading design and specification resource for licensed structural engineers involved in building, bridge, and public works projects across the United States.

## Structural Software Consulting (SSC)

**Booth 340**  
 223 Levis Rd  
 Portersville, PA 16051  
 Ph: 724.368.8150  
 Fax: 724.368.8522  
<http://www.steelssc.com>

SSC FabSuite is an integrated suite of fabrication management programs including: Estimating, Combining (length multing and plate nesting), Inventory Control, Production Control, and Purchasing. SSC programs have been used by hundreds of fabricators over the past 20 years and are now available in a new Windows format. Stop by for a demonstration to see how SSC can provide you the tools to better manage your time and materials and positively affect your bottom line.

**Structural Stability Research Council**  
**Booth 635**

301 Butler - Carlton Hall  
 Rolla, MO 65409  
 Ph: 573.341.6610  
 Fax: 573.341.4476  
<http://www.stabilitycouncil.org>

The Structural Stability Research Council provides support and technical counsel for stability research, holds regular meetings to report on research activities, and publishes the definitive work, "Guide to Stability Design Criteria for Metal Structures." The SSRC Annual Stability Conference provides up-to-date information and identifies where efficiencies exist in present understanding of structural behavior. Conference proceedings represent a primary source of highlights of the latest solutions to structural problems before they are eventually published in technical journals.

**Stud Welding Associates**  
**Booth 112**

41515 Schaden Rd  
 Elyria, OH 44035  
 Toll-Free: 800.874.7860  
 Fax: 440.324.3301  
<http://www.studwelding.com>

Stud Welding Associates is one of the leading stud welding companies in North America. We offer a full line of shear connectors, headed anchors, deformed bars, weld studs, stud welding equipment, and accessories backed up with a network of product and service warehouses across the country. Ask to see the Rapid Ferrule Dispenser and we will demonstrate for you a simple cost effective method for setting Ferrules on your next job. Stud Welding Associates is an ISO 9001-2000 Registered Company.

**Taylor Devices, Inc.**  
**Booth 124**

90 Taylor Dr  
 North Tonawanda, NY 14120  
 Ph: 716.694.0800  
 Fax: 716.695.6015  
<http://www.taylordevices.com>

Taylor Devices is the world-leading manufacturer of Fluid Viscous Damping Devices, Shock Transmission Units, and Tuned Mass Dampers for earthquake, wind, and vibration protection of buildings, bridges, and many other structures. Other products include Lock-up Devices, Fluid Viscoelastic Dampers, cable dampers, liquid springs, crane buffers, and virtually any other custom shock absorber product imaginable.

**TDS Industrial Services Ltd.**  
**Booth 242**

201-350 Quebec St  
 Prince George, BC, Canada V2L 5H4  
 Ph: 250.561.1646  
 Fax: 250.562.8549  
<http://www.tdsindustrial.com>

Steel detailing of structural and miscellaneous steel and plate work.

**Techflow Engineers (India)**  
**Booth 240**

415 Bldg No. 2 A-3, Sector 1 MBP  
 Mahape Navi Mumbai, 400701 India  
 Ph: 91.22.2778401  
 Fax: 91.22.2778402  
<http://www.techfloweng.com>

**Tekla, Inc.**  
**Booth 101**

600 Town Park Ln - Ste 175  
 Kennesaw, GA 30144  
 Ph: 770.426.5105  
 Toll-Free: 877.TEKLA.OK  
 Fax: 770.919.0574  
<http://www.tekla.com>



Tekla conducts R&D to advance intelligent, parametric 3D modeling for steel structures. As a result, Tekla Xsteel has evolved into Tekla Structures—a way for the entire structural design sector to share project information and collaborate in real-time. Tekla Structures enables interoperability and project management through real-time model sharing across all phases of construction: design-analysis-detailing-fabrication. With Tekla Structures, all contract, detail drawings, and reports are generated directly from the model, at any time. Everything is integrated into one, modular software solution that connects you and your partners. And it includes the data exchange standards you expect, like the latest CIS/2 and IFC formats, so existing investments can be integrated with Tekla's technology. Now everyone from general contractors to designers, engineers, detailers, and fabricators can benefit from the advantages of an intelligent 3D model.

**Tennessee Galvanizing, Inc.**  
**Booth 604**

P.O. Box 609  
 Jasper, TN 37347  
 Ph: 423.942.1020  
 Toll-Free: 877.242.5848  
 Fax: 423.942.1040  
<http://www.tennesseegalvanizing.com>

Hot-dip galvanizing service. Structural and miscellaneous fabricated steel, fasteners, all thread rods, bolts, anchor bolts, all thread studs, double end rods, U-boats, wheels, and boat trailers.

**Triodetic Building Products, Ltd.**  
**Booth 504**

2753 Fenton Rd  
 Ottawa, ON, Canada K1T 3T8  
 Ph: 613.822.2922  
 Toll-Free: 800.565.2743  
 Fax: 613.822.1375  
<http://www.triodetic.com>

Custom framing for long spans, curved structures, and abnormal loadings. Specialists in domes, space-frames, and free-form structures for architectural buildings and stockpile enclosures.

**TurnaSure LLC**  
**Booth 135**

340 E Maple Ave - #305  
 Langhorne, PA 19047  
 Ph: 215.750.1300  
 Toll-Free: 800.525.7193  
 Fax: 215.750.6300  
<http://www.turnasure.com>



TurnaSure has the most comprehensive range of Direct Tension Indicator washers (DTIs) in the world. The firm's predecessors were the inventors in 1962, and first introduced this simple and reliable method of assuring proper tension in structural bolts at the AISC convention 30 years ago. Over the past decade, TurnaSure has reengineered DTIs from the ground up. TurnaSure's DTIs are now the most accurate and reliable on the world market. They meet and exceed the ASTM Standards.



**TXI Chaparral Steel**  
**Booth 413**

300 Ward Rd  
 Midlothian, TX 75205  
 Ph: 972.779.3100  
 Fax: 972.779.1236  
<http://www.chaparralsteel.com>

Montréal, Québec – Canada

April 6–9



**V.M. Informatics**

**Booth 239**

211A Om Vihar Phase 1A  
Uttam Nagar, New Delhi, India  
Ph: 011.91.25352358  
Fax: 646.365.3291  
<http://www.vminformatics.com>

**Voigt & Schweitzer, Inc.**

**Booth 107**

1000 Buckeye Park Rd  
Columbus, OH 43207  
Ph: 614.449.8281  
Toll-Free: 800.801.3648  
Fax: 614.449.8851  
<http://www.hotdipgalvanizing.com>

Voigt & Schweitzer operates 72 facilities throughout the world, with eight galvanizing facilities in the US. We are centralized in the Midwest and East Coast and are the largest galvanizer in the world. Each of our plants has its own trucking, some with the largest kettles in North America. V&S specializes in DUROZINQ® and COLORZINQ®. Our corrosion protection system is like no other, with on-time delivery, packaging, shipping, and custom-color matching. Call us for details.

**Vulcraft of New York, Inc.**

**Booth 401**

5362 Railroad St  
PO Box 280  
Chemung, NY 14825  
Ph: 607.529.9000  
Fax: 607.529.9001  
<http://www.vulcraft.com>

Vulcraft continues to be an industry leader in both steel joist and steel deck products.

**Wheeling Corrugating Co.**

**Booth 213**

1134 Market St  
Wheeling, WV 26003  
Ph: 304.234.2300  
Fax: 304.234.2330