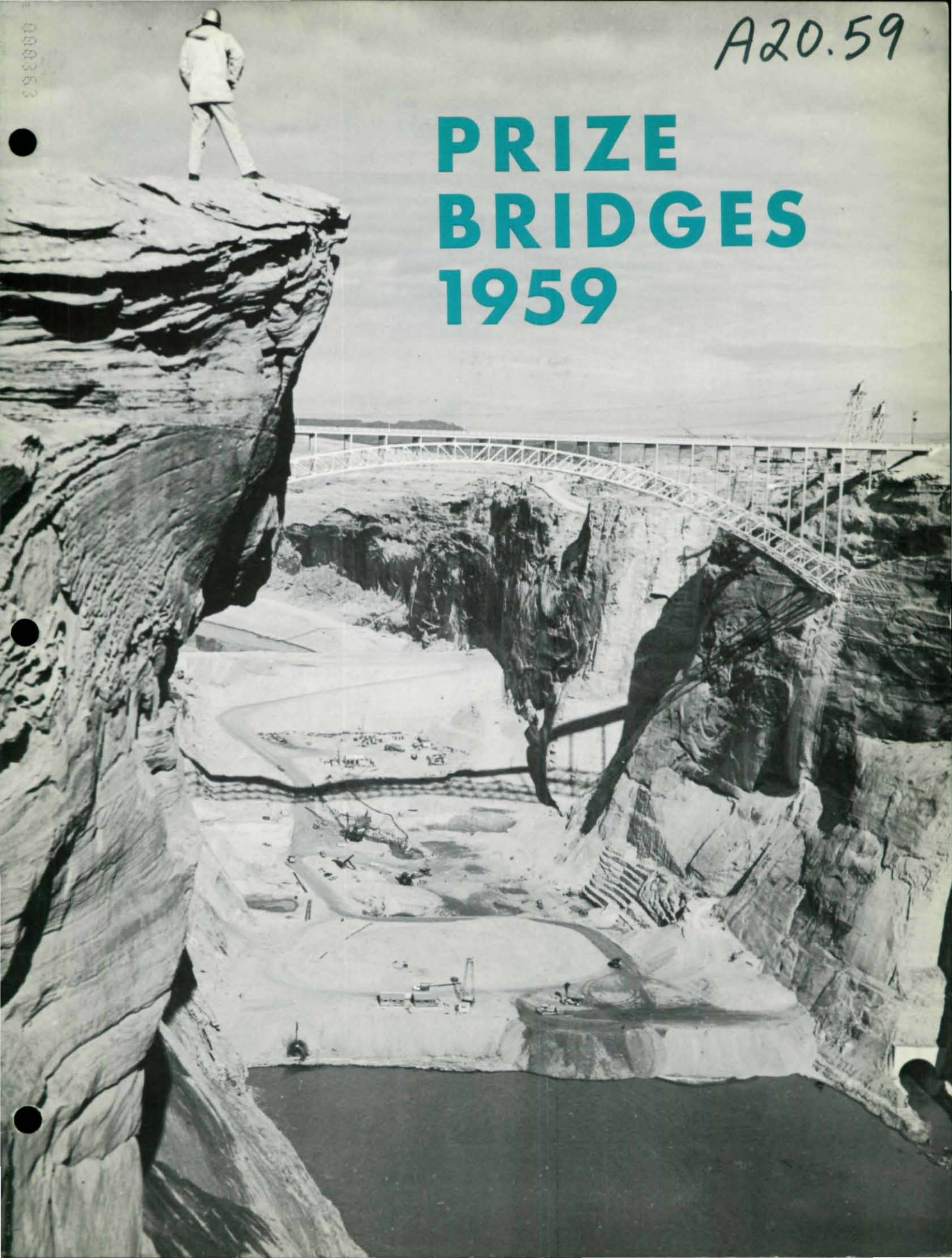


A20.59

PRIZE BRIDGES 1959



1959000

Prize Bridges 1959

Steel bridges selected in the annual national competition conducted by the American Institute of Steel Construction as the most beautiful bridges opened to traffic in 1959.

AMERICAN INSTITUTE OF STEEL CONSTRUCTION, INC.
101 Park Avenue, New York 17, N. Y.

Jury of Award

E. L. ERICKSON

Chief

Bridge Division, Office of Engineering
Bureau of Public Roads
Washington, D. C.

KARL KAMRATH

Architect

Houston, Texas

L. BANCEL LaFARGE

Architect

New York City, New York

CHARLES H. SAWYER

Director

University of Michigan Museum of Art
Ann Arbor, Michigan

PHILIP WILL, JR.

President

American Institute of Architects
Chicago, Illinois

Beauty in Steel Bridges

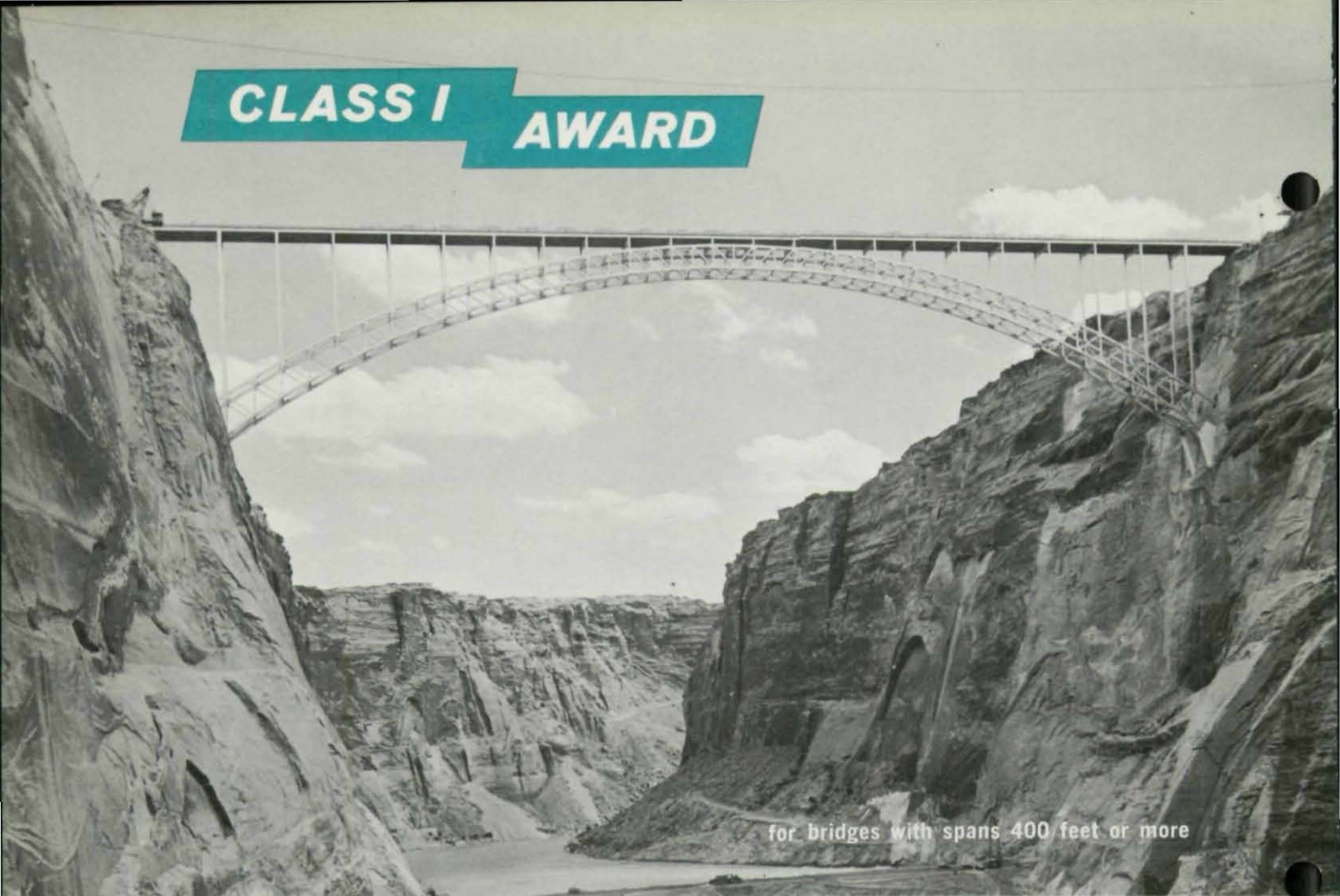
The enduring beauty of steel bridges is eloquent tribute to the vision and skill of the men who plan, design and build them. The bridge designer of today is both artist and engineer. He understands the potential for strength and beauty which is inherent in steel structures, and he knows that aesthetic appearance can be achieved at no sacrifice of efficiency or economy. The simple grace of a highway overpass, no less than the majestic sweep of a river crossing reflects a creative integration of structure, function and form, skillfully executed in beautiful bridges of steel.

To promote a more widespread appreciation of the aesthetics of steel bridges and to honor the architectural excellence of modern bridge design, the American Institute of Steel Construction sponsors an annual Prize Bridge Competition. Each year a distinguished Jury of Award, composed of leading art directors, architects and engineers, selects the steel bridges which it judges to be the most beautiful of those opened to traffic in the United States during the previous year.

To establish an equitable basis for competition, awards are made in each of four contest classifications. Size, cost and operating conditions determine the class in which each entry is eligible to compete. The prize winning bridges are marked with stainless steel plaques, and the designers, owners and steel fabricators are awarded engraved certificates in recognition of their contribution and achievement.

The American Institute of Steel Construction sponsors this competition and awards the prizes in the belief that it is helping to render a public service by stimulating a deep and lasting interest in improved bridge design. Since 1957 the Institute has recorded the prize bridges for each year in a single volume. Previous winners, covering the period 1928-56, are pictured and described in the booklet "Prize Bridges Through the Years," available from the Institute upon request.

CLASS I AWARD



for bridges with spans 400 feet or more

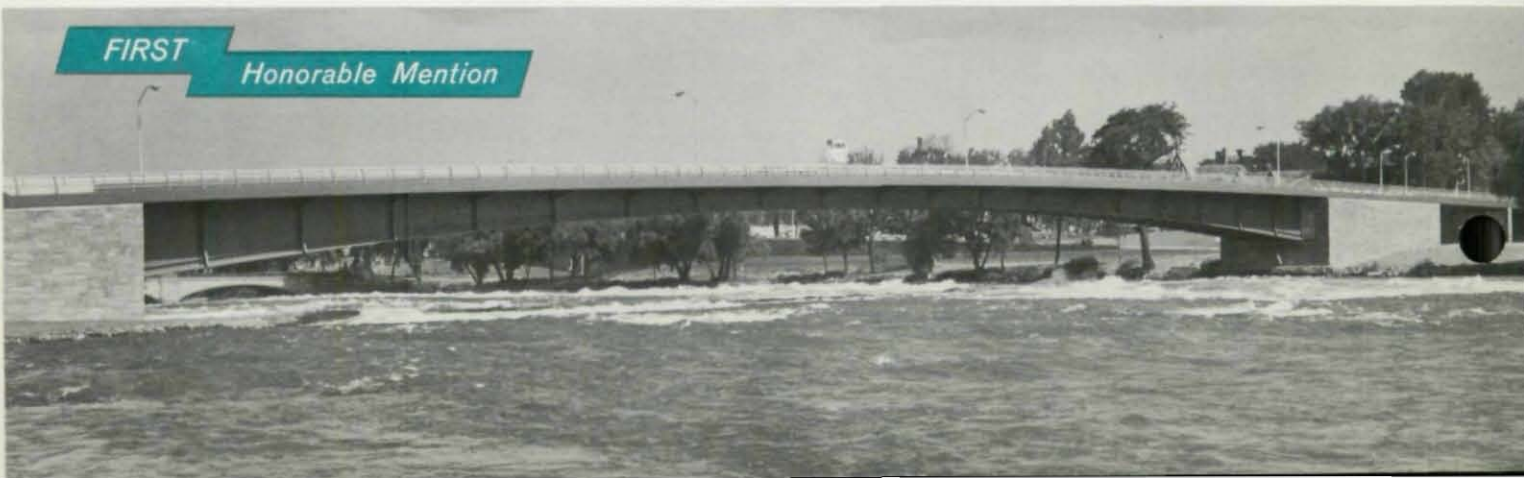
Glen Canyon Bridge

Page, Arizona. OWNER: U. S. Bureau of Reclamation;
DESIGNER: United States Department of the Interior, Bureau of
Reclamation; FABRICATOR: Judson Pacific-Murphy Corporation,
Division of Yuba Consolidated Industries.

American Rapids Bridge

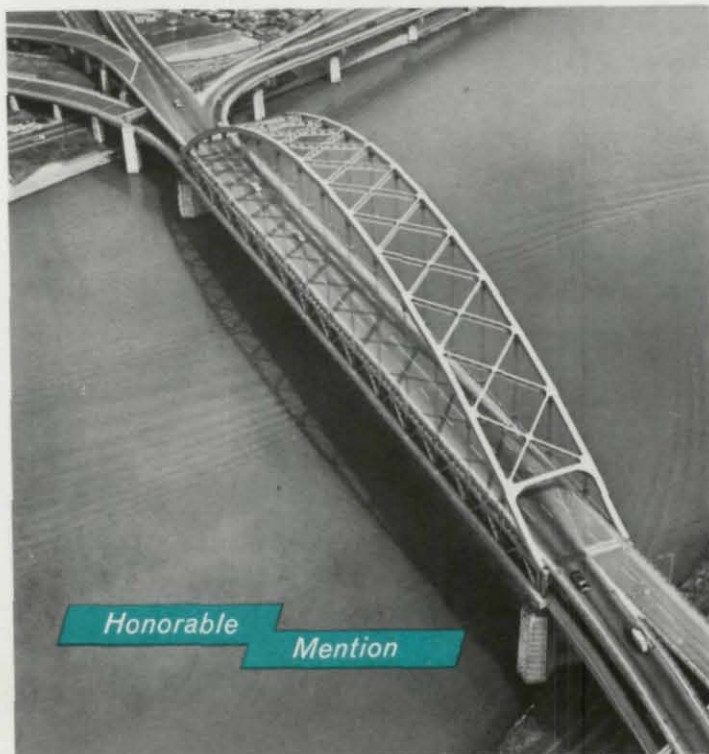
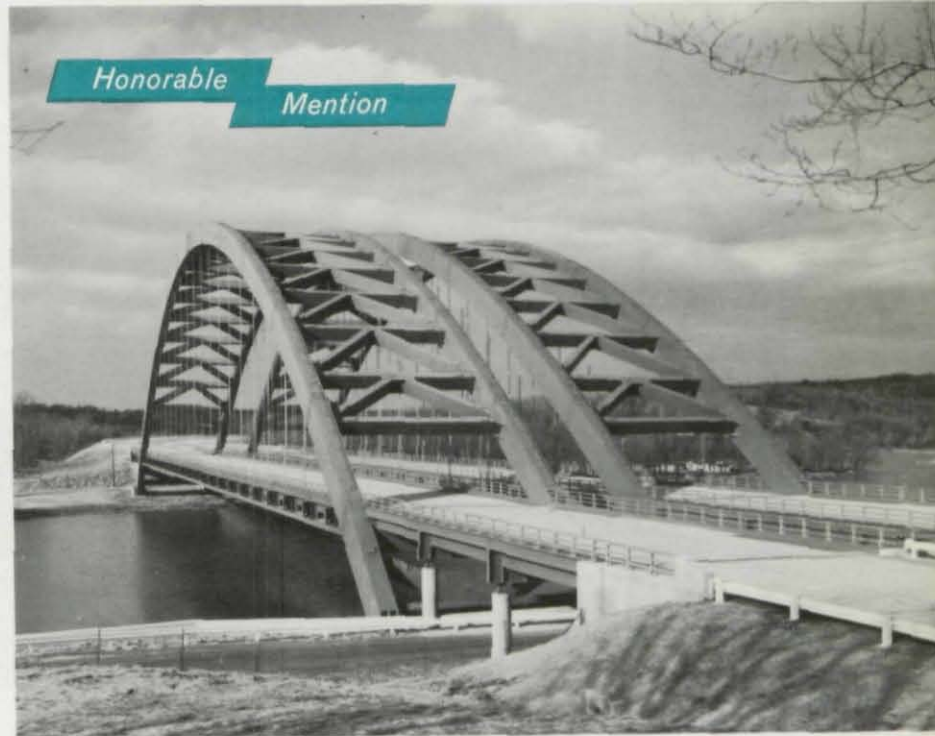
Niagara Falls, New York, OWNER: Power Authority of State of New York;
DESIGNER: Praeger-Kavanagh; FABRICATOR: Bethlehem Steel Company.

FIRST Honorable Mention



Interstate Route 502

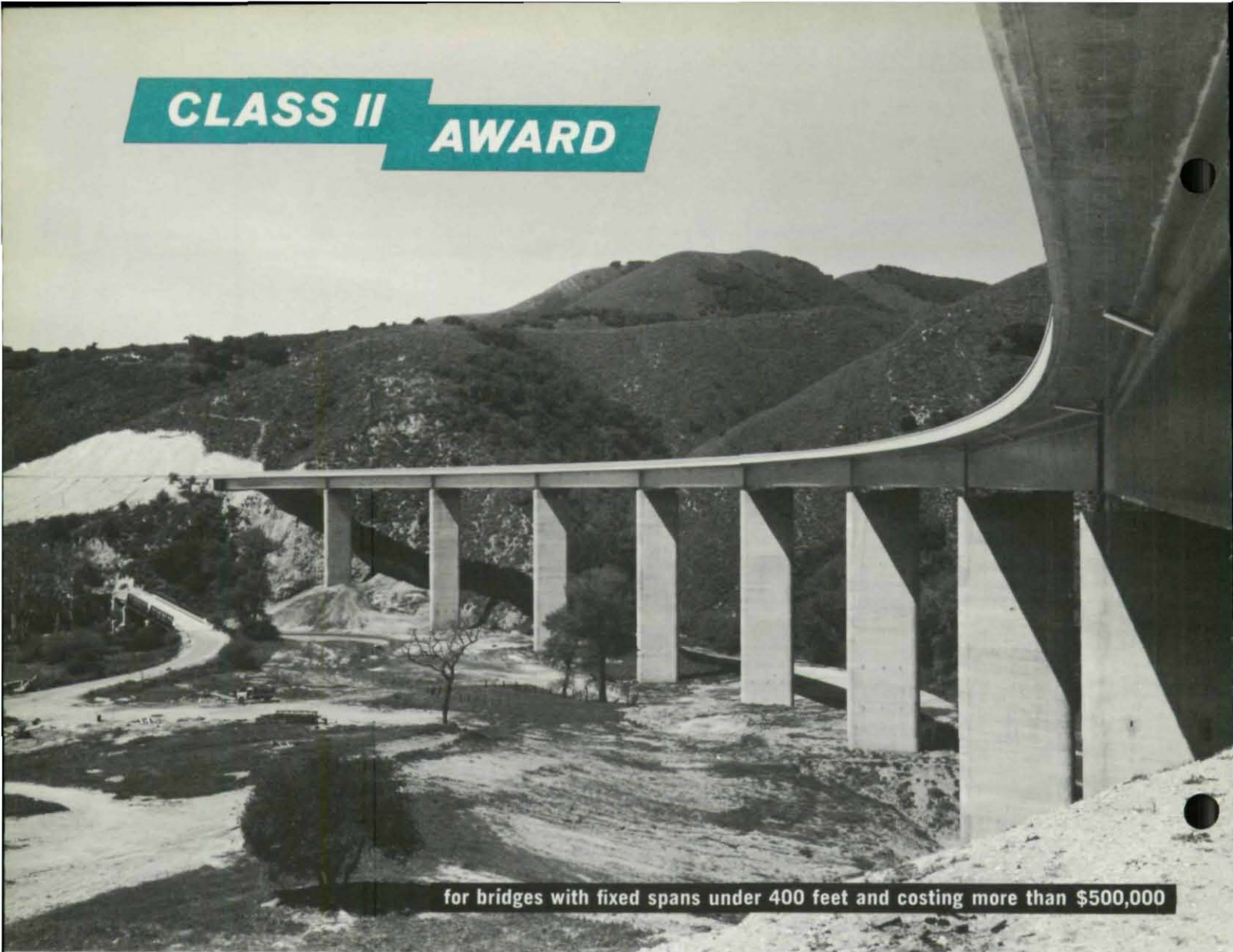
Over the Mohawk River, Albany and Saratoga Counties, New York.
OWNER: State of New York;
DESIGNER: Office of Deputy Chief Engineer (Bridges) New York State Department of Public Works, assisted by Frankland & Lienhard;
FABRICATOR: American Bridge Division, United States Steel Corporation.



Fort Pitt Bridge

The "Point" over Monongahela River, Pittsburgh, Pennsylvania.
OWNER: Commonwealth of Pennsylvania, Department of Highways; DESIGNER: Richardson, Gordon and Associates,
FABRICATOR: American Bridge Division, United States Steel Corporation.

CLASS II AWARD



for bridges with fixed spans under 400 feet and costing more than \$500,000

Huasna River Bridge

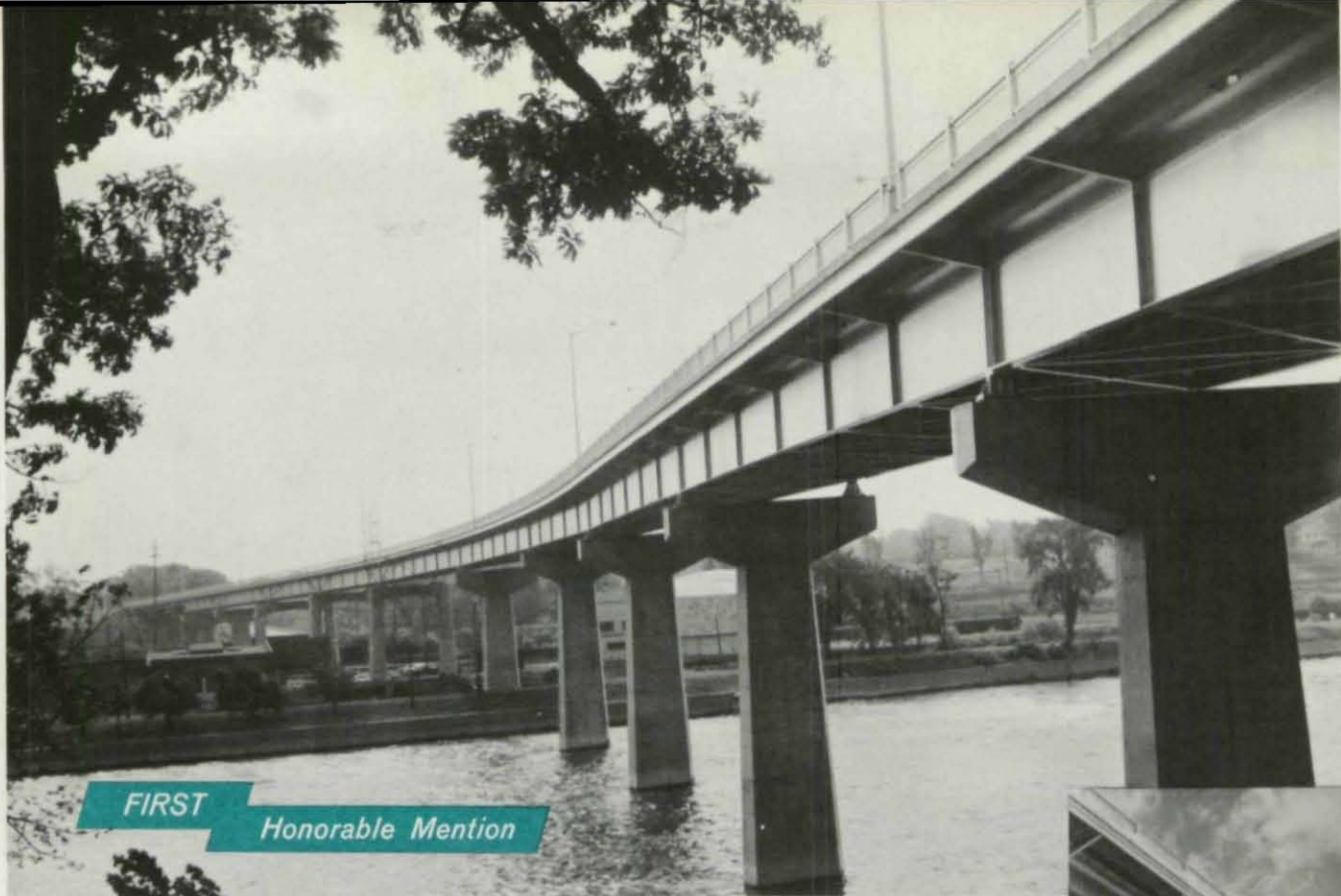
On Route 166 ten miles North East of Santa Maria, California. OWNER: State of California; DESIGNER: Department of Public Works, State of California; FABRICATOR: Vinnell Steel.

Park Road Bridge

Over the Piney Branch Parkway, Washington, D. C. OWNER: Government of The District of Columbia; DESIGNER: District of Columbia Department of Highways & Traffic; FABRICATOR: American Bridge Division, United States Steel Corporation.



Honorable Mention



FIRST
Honorable Mention

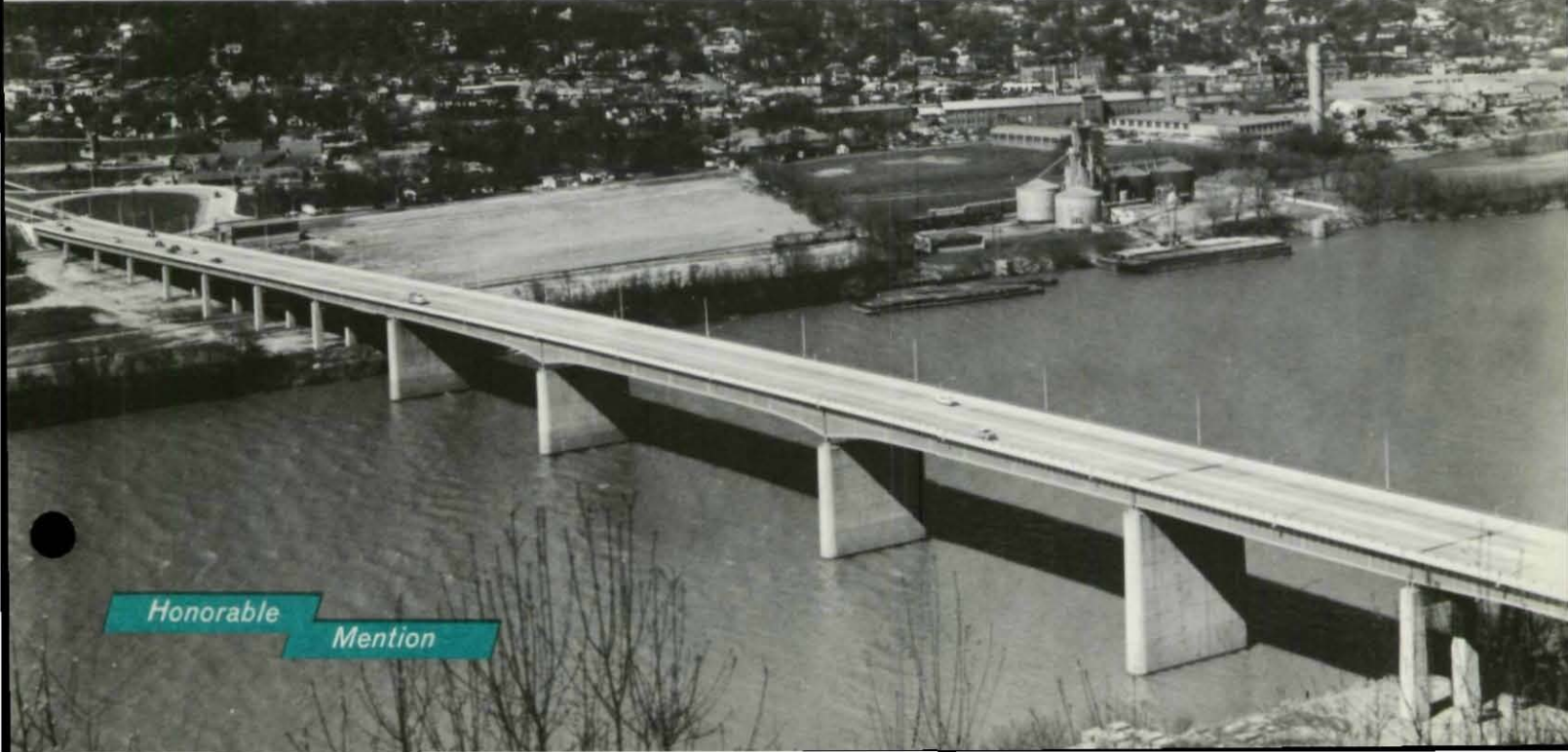
College Avenue Bridge

Appleton, Wisconsin. OWNER: State Highway Commission of Wisconsin; DESIGNER: Bridge Section, State Highway Commission of Wisconsin; FABRICATOR: Worden-Alien Company.



The P. R. Olgiate Bridge

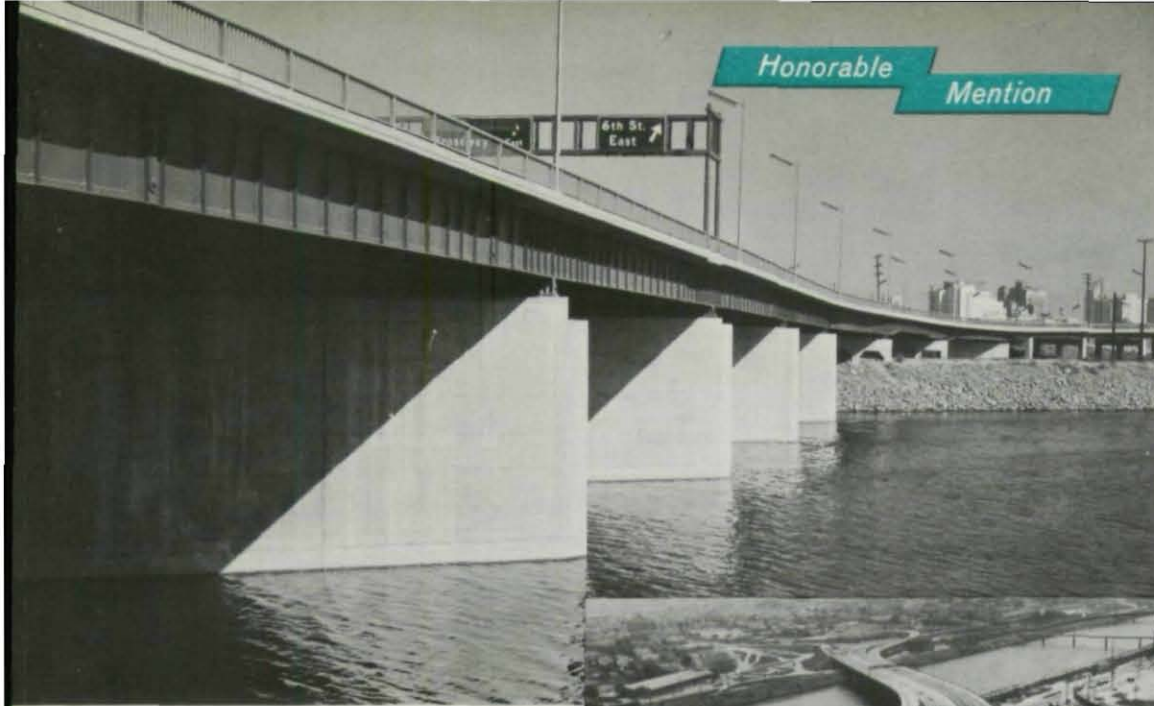
Over Tennessee River, Chattanooga, Tennessee.
OWNER: State of Tennessee, Department of Highways;
DESIGNER: Aake F. Hedman & Associates;
FABRICATOR: Bethlehem Steel Company.



Honorable
Mention

*Honorable
Mention*

CLASS II
Continued

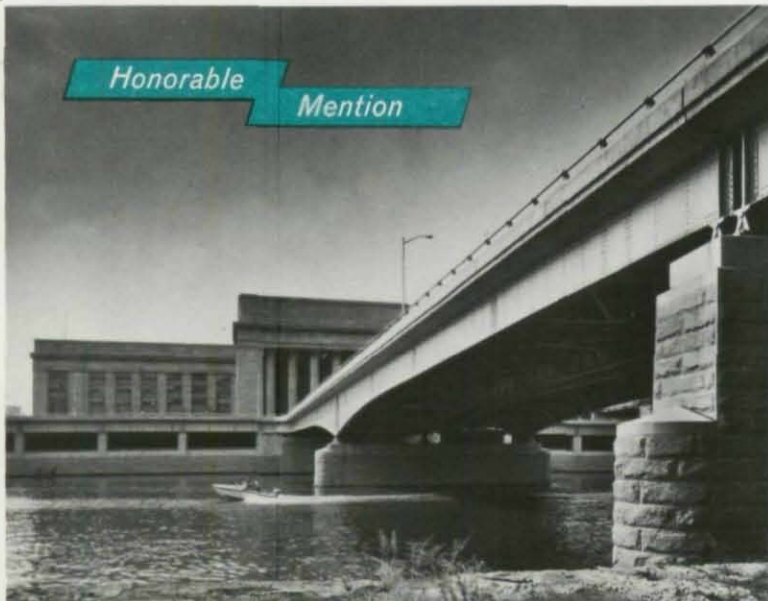


Robert R. Shoemaker Bridge

Long Beach, California.
OWNER: Port of Long Beach, California;
DESIGNER: Moffatt & Nichol;
FABRICATOR: Bethlehem Steel Company.



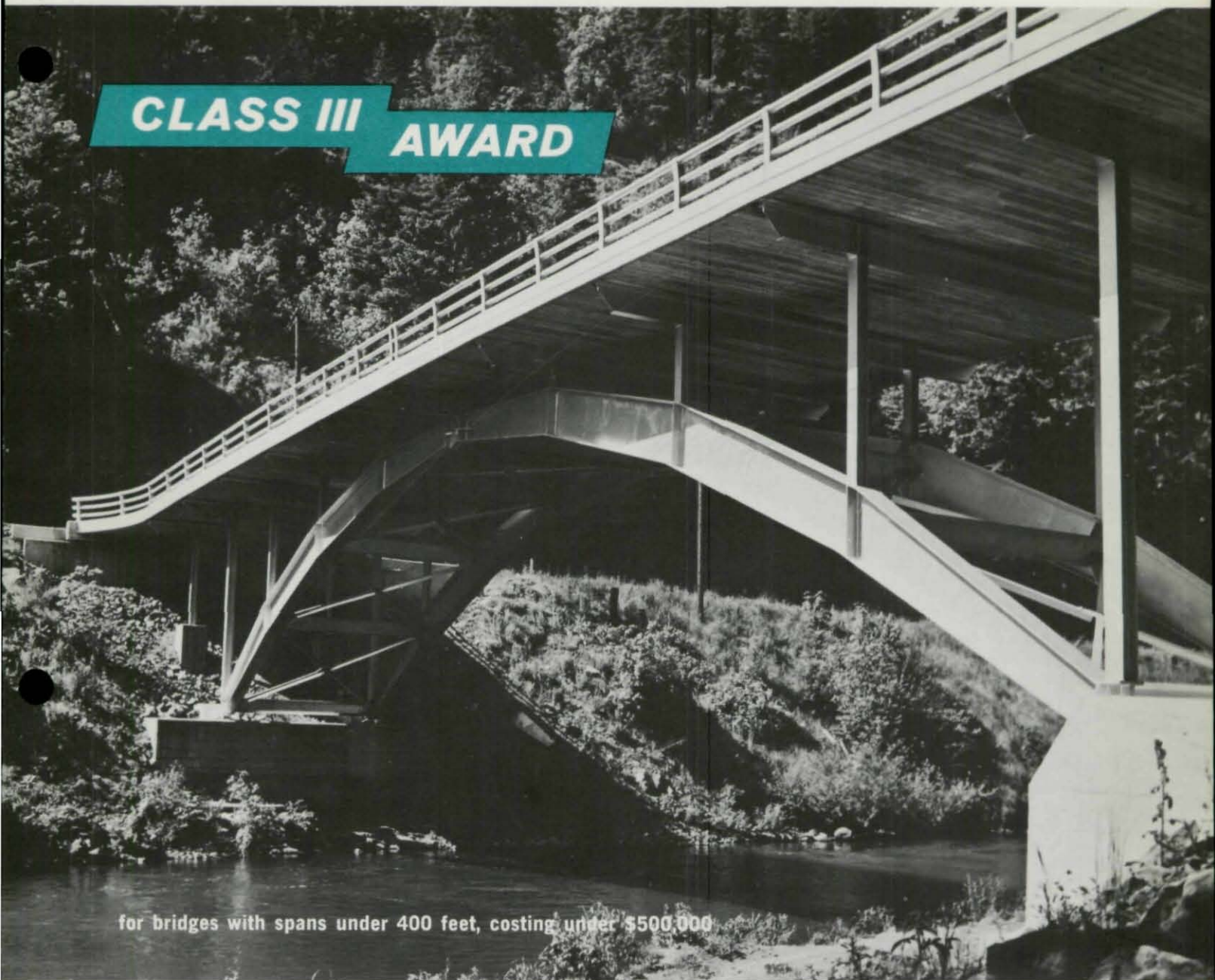
*Honorable
Mention*



Pennsylvania Boulevard Bridge

Philadelphia, Pennsylvania.
OWNER: Pennsylvania Department of Highways;
DESIGNER: Gannett Fleming Corddry & Carpenter, Inc.;
FABRICATOR: Baldwin-Lima-Hamilton Corp.

**CLASS III
AWARD**

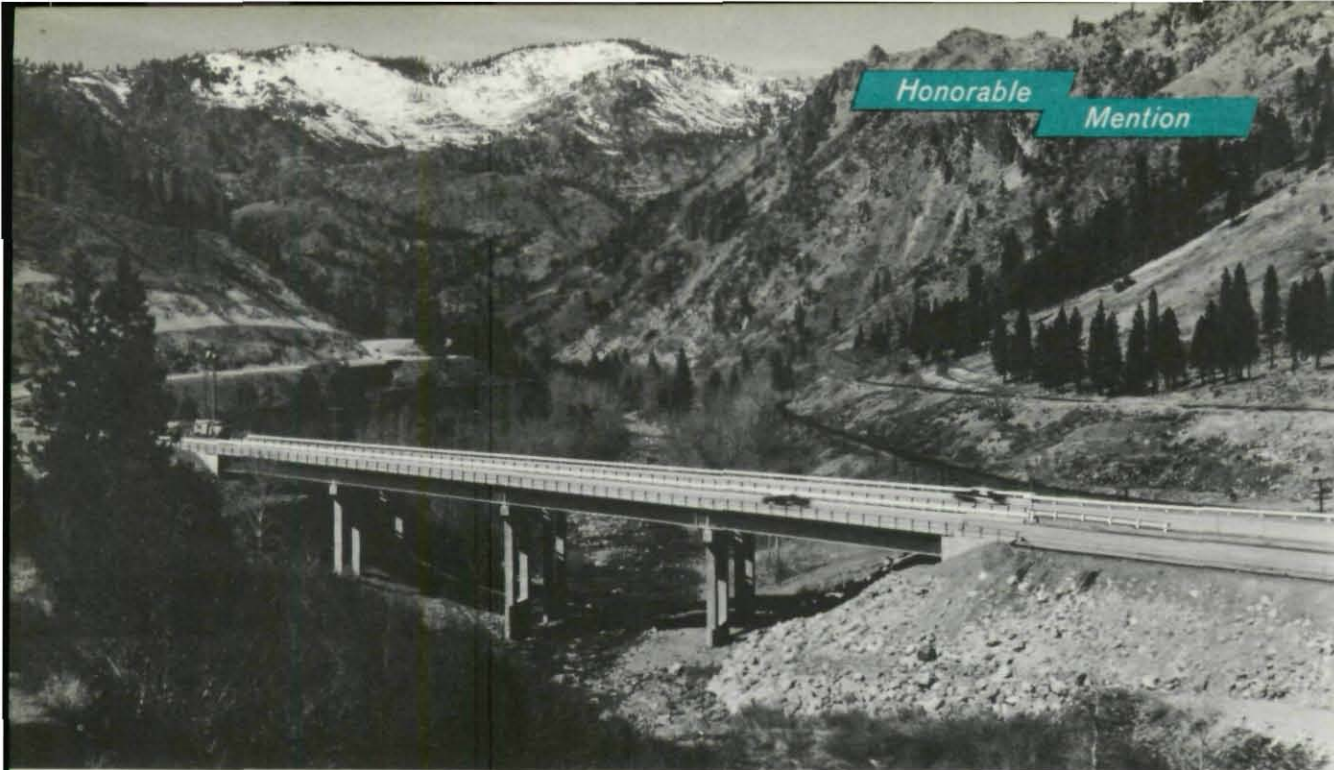


for bridges with spans under 400 feet, costing under \$500,000

Modrow Bridge,

Cowlitz County, Washington. OWNER: Cowlitz County;
DESIGNER: Harry R. Powell and Associates;
FABRICATOR: Isaacson Iron Works.

*Honorable
Mention*



Truckee River Bridge

Thirteen miles North East of Truckee, California. OWNER: State of California;
DESIGNER: Department of Public Works, State of California;
FABRICATOR: San Jose Steel Company, Inc.

*Honorable
Mention*



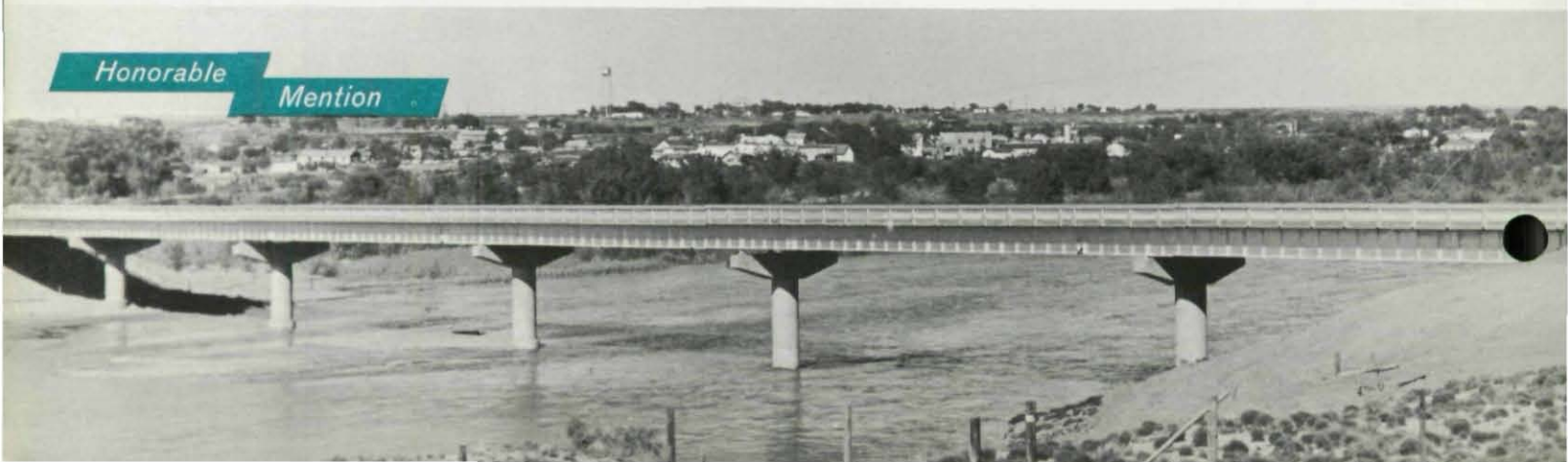
Kern Avenue Pedestrian Overcrossing

MacFarland, California. OWNER: State of California; DESIGNER: Department of Public Works, State of California; FABRICATORS: Fresno Shop and Pittsburgh-Des Moines Steel Company.

Pecos River Bridge

Ft. Sumner, New Mexico. OWNER: New Mexico State Highway Commission;
DESIGNER: Bridge Design Section, New Mexico State Highway Commission;
FABRICATOR: American Bridge Division, United States Steel Corporation.

*Honorable
Mention*



CLASS IV *Movable Bridges*



*Honorable
Mention*

Grant Line Canal Bridge

Between Stockton and Tracy, California. OWNER: San Joaquin County;
DESIGNER: Department of Public Works, State of California;
FABRICATOR: Independent Iron Works.

TOP AWARD WINNERS SINCE 1928

	CLASS I	CLASS II	CLASS III	CLASS IV
1958	Mackinac Bridge Mackinac Straits, Mich.	Louis Morris Memorial Bridge Hartnell, Ga.	Norwood Bridges Norwood, Mass.	
1957	Walt Whitman Bridge Philadelphia, Pa.	General James Longstreet Memorial Bridge Gainesville, Ga.	Hampton Road Overpass Dallas-Ft. Worth Turnpike Dallas, Texas	Madison-Monroe Street Bridge Two Rivers, Wis.
1956	Missouri River Pipeline Suspension Bridge Plattsmouth, Nebraska	Buffalo Bayou Bridges Houston, Texas	Allegheny River Bridge Salamanca, New York	
1955	Leavenworth Centennial Bridge Leavenworth, Kansas	Cuyahoga River Bridge Ohio Turnpike	Old State Route 8 Bridge Ohio Turnpike	Welfare Island Bridge New York
1954	Missouri River Bridge Kansas City, Missouri	Little Chute-Kimberly Combined Locks Bridge Outagamie County, Wisconsin	Garrison School Pedestrian Bridge Kansas City, Missouri	
1953		Ninth and Tenth Street Connections San Francisco, California	Robert Street Underpass Fort Worth, Texas	New York Central Railroad Bridge Cleveland, Ohio
1952		Neches River Bridge Beaumont, Texas	Morris Ferry Bridge Franklin County, Tennessee	S. E. Fourth Avenue Bridge Miami, Florida
1951	Delaware Memorial Bridge Wilmington, Delaware	Forebay Channel Bridge Arizona-Nevada	Grove Street Overpass Lexington, Massachusetts	Harlem River Pedestrian Bridge Manhattan
1950	Columbia River Bridge Wenatchee, Washington	South Holston River Bridge Tennessee State Highway	Caldwell Avenue Bridge Cook County, Illinois	
1949	North Main Street High Level Bridge Akron, Ohio	Pinto Creek Bridge Superior, Arizona	Tenth Street Bridge Atlanta, Georgia	Passaic River Bridge Rutherford, New Jersey
1948	Watuaga River Bridge Carter County, Tennessee		Airport Apron Overpass New York International Airways	
1947		Saco River Bridge Maine Turnpike	Old Alfred Road Underpass Maine Turnpike	
1946				Absecon Boulevard Bridge Atlantic City, New Jersey
1945			Fontana Access Bridge Little Tennessee River	President Harry S. Truman Bridge Kansas City, Missouri
1944		Pecos River Bridge High Bridge, Texas		
1943	Julien Dubuque Mississippi River Bridge Dubuque, Iowa & East Dubuque, Ill.			
1942		Charter Oak Bridge Hartford & East Hartford, Conn.	Martin Interchange Bridge Middle River, Maryland	
1941	Rainbow Bridge Niagara Falls, New York & Niagara Falls, Ontario		Fairmount Boulevard Bridge Hunting Valley Village, Cuyahoga County, Ohio	Passaic River Bridge Newark & Kearny, New Jersey
1940	Susquehanna River Bridge Havre de Grace, Maryland	Dunnings Creek Bridge Bedford Township, Penn.	Klamath River Bridge Orleans, Humboldt County, Calif.	Oceanic Bridge Locust Point & Rumson, N. J.
1939	Bronx-Whitestone Bridge East River, New York		Valley River Foot Bridge Murphy, North Carolina	Second Avenue Bridge Alpena, Michigan

TOP AWARD WINNERS SINCE 1928 (Continued)

	CLASS I	CLASS II	CLASS III	CLASS IV
1938	Middletown-Portland Bridge Middletown, Connecticut	Capital Bridge Frankfort, Kentucky	Middle Fork of Flathead River Bridge Belton, Montana	Lafayette Avenue Bridge, East Channel Saginaw River Bay City, Michigan
1937	Golden Gate Bridge San Francisco, California	Little Hell Gate, Low Level Bridge Randall's Island & Ward's Island, New York City	Chesterfield-Brattleboro Bridge New Hampshire & Vermont	Marine Parkway Bridge New York City
1936	East River Crossing, The Triborough Bridge New York City	Hurricane Deeck Bridge Camden County, Missouri	Astoria Boulevard Over Grand Central Parkway Extension New York City	
1935	North Grand Island Bridge Niagara Falls, New York	Lorain Road Viaduct Cleveland, Ohio	Mortimer E. Cooley Bridge Wellston, Michigan	
1934	Bourne Bridge Bourne, Mass.		Douglas County Bridge Nebraska	
1933	Cedar Street Bridge Peoria, Illinois	Shark River Bridge Avon, New Jersey	Dr. John D. McLoughlin Bridge Clackamas County, Oregon	
1932	Pulaski Skyway Hudson County, N. J.	French King Bridge Erving, Massachusetts	Bryan Bridge Valentine, Nebraska	
1931	Bayonne Bridge Bayonne, N. J. & Staten Island, N. Y.	Waldo-Hancock Suspension Bridge Bucksport, Maine	West Stewartstown Bridge West Stewartstown, N. H.	
1930	Wabash Avenue Bridge Chicago, Illinois		Delton Bridge Delton, Wisconsin	
1929	Mount Hope Bridge Portsmouth, R. I.	Mount Pleasant Bridge Mt. Pleasant, New York		
1928	Sixth Street Bridge Pittsburgh, Pa.			

Contest entry rules and requirements are available upon request from the American Institute of Steel Construction.



AMERICAN INSTITUTE OF STEEL CONSTRUCTION, INC.
101 Park Avenue, New York 17, N. Y.